

## K4158 Misses' Tops

XS-S-M-L-XL

Loose fitting, pullover tops have front and back seams, V-neckline with self-fabric neckband, bust darts, contrast front and back sections and shaped hemline. **Top A:** Armholes finished with bias tape. **Top B:** Contrast three-quarter length sleeves.

**FABRICS:** Designed for light to medium weight woven fabrics.

**Suggested Fabrics:** Cotton blends, challis, crepe de chine, gauze.

### STANDARD BODY MEASUREMENTS:

SIZES:	XS	S	M	L	XL	
Bust	31½-32½	34-35½	37-38½	40-41½	43-45	"
	80-83	86-90	94-98	102-106	110-114	cm
Waist	22½-23½	24¾-26	27½-29	31-33	35-37	"
	57-60	63-66	70-74	79-84	89-94	cm
Hip	32½-34	35½-37	38½-40	41½-43½	45-47	"
	82-86	90-94	98-102	106-110	115-120	cm
Back Waist Length						
	15½	16	16½	17	17	"
	39	41	42	43	43	cm

### FINISHED GARMENT MEASUREMENTS:

SIZES:	XS	S	M	L	XL	
Finished Length at Center Back From Waist						
Top A, B	14 (36)	14½ (37.3)	15 (38)	15½ (39.3)	16 (41)	" (cm)

**MATERIAL REQUIRED:** Fabric requirement allows for nap, one-way design or shading.

Extra fabric may be needed to match design or for shrinkage.

SIZES:	XS	S	M	L	XL	
<b>FABRIC 45" (115 cm) WIDE</b>						
Top A, B	1¼ (1.2)	1¼ (1.2)	1¼ (1.2)	1¾ (1.3)	1¾ (1.3)	yd (m)
Contrast A	1¼ (1.2)	1¼ (1.2)	1¼ (1.2)	1¼ (1.2)	1¾ (1.3)	yd (m)
Contrast B	1¾ (1.6)	1¾ (1.6)	1¾ (1.6)	1¾ (1.6)	1¾ (1.8)	yd (m)

<b>FABRIC 60" (152 cm) WIDE</b>						
Top A, B	7/8 (0.8)	7/8 (0.8)	1 1/8 (1.1)	1 1/8 (1.1)	1 1/8 (1.1)	yd (m)
Contrast A	¾ (0.7)	¾ (0.7)	7/8 (0.8)	7/8 (0.8)	1 (1.0)	yd (m)
Contrast B	1 3/8 (1.3)	1 3/8 (1.3)	1 3/8 (1.3)	1 1/2 (1.4)	1 1/2 (1.4)	yd (m)

### FUSIBLE INTERFACING 18", 20" (46, 51 cm) WIDE

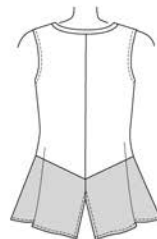
Top A, B - ½ yd (0.5 m)

**NOTIONS:** A: ½" (1.3 cm) single fold bias tape.

View A Front



View A Back



View B Front



View B Back

