

Line Art & Yardage Information

Front
Frente

A



A



Front
Frente

A



A

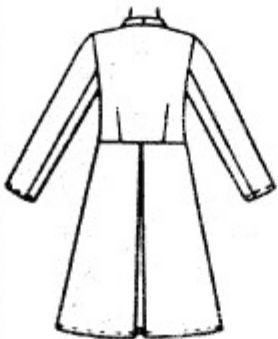


Front
Frente

B

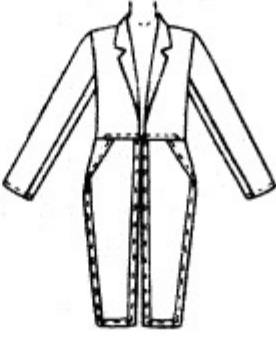


B

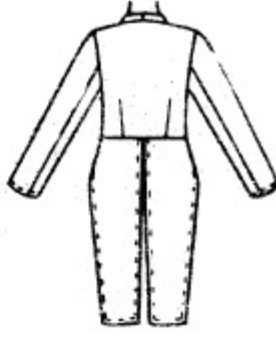


Front
Frente

C



C



Front
Frente

B-C

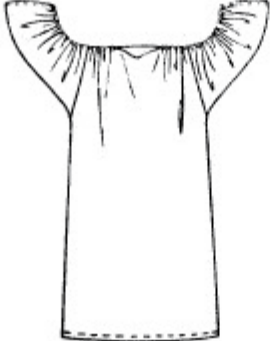


B-C

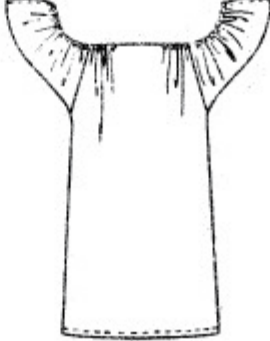


Front
Frente

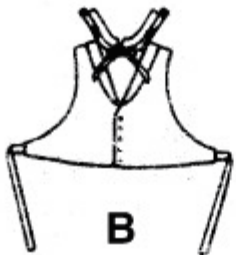
D



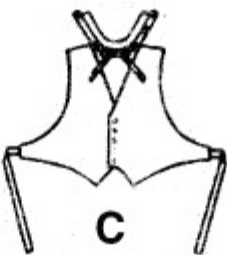
D



A



B



C

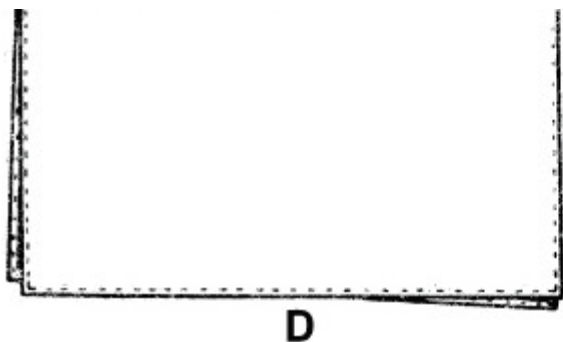


B



C





ADULTS', BOYS' OR GIRLS' COSTUMES.

NOTIONS: Thread.

SUGGESTED FABRICS: **View A thru D** - Cotton • Cotton Blends • Polished Cotton; **View D** - also Gauze; **Hat B, C, Crown and Torch D** - also Felt. Additional Fabric may be needed to match stripes, plaids or one-way design fabric.

*With Nap **Without Nap ***With or Without Nap

Fabric widths given in inches.

SIZES	Adults'			Boys' or Girls'			Ins.
	Small	Medium	Large	6-7	8-10	12-14	
Bust/Chest	32 ¹ / ₂ -34	36-38	40-42	25-26	27-28 ¹ / ₂	30-32	
Coat A							
45" **	2 ⁵ / ₈	2 ⁵ / ₈	2 ⁷ / ₈	2 ³ / ₈	2 ³ / ₈	2 ¹ / ₂	Yds.
Eighteen ⁵ / ₈ " Buttons (Adult); Eighteen ¹ / ₂ " Buttons (Child)							
Fusible Interfacing (Optional) - 21" thru 25", 1 ¹ / ₄ yds.							
Knickers A							
45" **	1 ³ / ₄	1 ³ / ₄	1 ³ / ₄	1 ¹ / ₂	1 ³ / ₄	1 ³ / ₄	"
Two 1 ¹ / ₄ " Wide Buckles; 1" Wide Elastic, 1 yd.							
Cuff Fusible Interfacing - 21" thru 25", ³ / ₄ yd.							
Vest A							
45" **	⁷ / ₈	⁷ / ₈	1	³ / ₄	⁷ / ₈	⁷ / ₈	Yd.
Five ¹ / ₂ " Buttons (Adult); Five ³ / ₈ " Buttons (Child); 1" Wide Twill Tape, 1 yd.							
Contrast Vest (Dickey and Collar) - Remnant, 21" x 21"							
5" Wide Double Edge Flat Lace (Adult), ¹ / ₂ yd.							
4" Wide Double Edge Flat Lace (Child), ³ / ₈ yd.							
³ / ₄ " Wide VELCRO® Type Fastener, 2"							
Coat and Pants B							
45" **	5 ³ / ₈	5 ¹ / ₂	5 ⁷ / ₈	4 ³ / ₈	4 ³ / ₄	5 ¹ / ₄	Yds.
Two ⁵ / ₈ " Buttons (Adult); Two ¹ / ₂ " Buttons (Child); 1" Wide Elastic, 1 yd.							
Front Fusible Interfacing - 21" thru 25", ³ / ₄ yd.							
Vest B							
45" **	³ / ₄	³ / ₄	⁷ / ₈	³ / ₄	³ / ₄	³ / ₄	Yd.

Five 1/2" Buttons (Adult); Five 3/8" Buttons (Child); 1" Wide Twill Tape, 1 yd.

Contrast Vest (Dickey and Collar) - Remnant, 21" x 18 1/2"

7/8" Wide Ribbon (Adult), 1 1/8 yds.; 5/8" Wide Ribbon (Child), 1 yd.

Fusible Interfacing - 21" thru 25", 5/8 yd.; 3/4" Wide VELCRO® Type Fastener, 1"

Hat B - 72" Wide Felt, 3/4 yd.

15" thru 18" Wide Fusible Webbing, 1 3/8 yds.

Heavyweight Fusible Interfacing (for Brim) - 21" thru 22", 1/2 yd.

Coat C

45" **	2 1/8	2 1/8	2 1/4	2	2	2	Yds.
--------	-------	-------	-------	---	---	---	------

Front Fusible Interfacing - 21" thru 25", 3/4 yd.

Pants C

45" **	2 5/8	2 5/8	2 5/8	2 3/8	2 1/2	2 5/8	"
--------	-------	-------	-------	-------	-------	-------	---

1" Wide Elastic, 1 yd.

Vest C

45" **	7/8	7/8	1	3/4	7/8	7/8	Yd.
--------	-----	-----	---	-----	-----	-----	-----

Five 1/2" Buttons (Adult); Five 3/8" Buttons (Child); 1" Wide Twill Tape, 1 yd.

Contrast Vest (Dickey and Collar) - Remnant, 21" x 18 1/2"

7/8" Wide Ribbon (Adult), 1 1/8 yds.; 5/8" Wide Ribbon (Child), 1 yd.

Fusible Interfacing - 21" thru 25", 5/8 yd.

3/4" Wide VELCRO® Type Fastener, 1"

Star Applique (Optional) - Felt Remnant, 2 1/2" x 2 1/2" (for Each Star)

Fusible Webbing Remnant, 2 1/2" x 2 1/2" (for Each Star)

Hat C - 72" Wide Felt, 3/4 yd.

15" thru 18" Wide Fusible Webbing, 1 5/8 yds.

Heavyweight Fusible Interfacing (for Brim) - 21" thru 22", 1/2 yd.

Felt Remnants: Contrast Band, 3" x 27", Contrast Stripe, 10" x 17"

Contrast Stars, 5" x 10"; 15" Wide Fusible Webbing, 2 yds.

Dress and Drape D

45" **	8 3/4	8 3/4	8 3/4	7 3/4	7 3/4	7 3/4	Yds.
--------	-------	-------	-------	-------	-------	-------	------

1 1/8" Wide Cording (Adult), 4 1/2 yds.; 1/8" Wide Cording (Child), 4 yds.

Crown and Torch D

72" Wide Felt: Torch (Green Contrast), 1/2 yd.

Flame (Orange Contrast) - Remnant, 8" x 32"

Purchased Decorative Pin; Polyester Fiberfill

Fusible Interfacing - 21" thru 25", 3/4 yd.

5/8" Wide VELCRO® Type Fastener, 1 3/4"

FINISHED GARMENT MEASUREMENTS

Back length from normal neckline

Coat A	38 1/2	39 1/2	40 1/2	28	31	35	Ins.
Coat B	43 1/2	44 1/2	45 1/2	31	35	39 1/2	"
Coat C	41 1/2	42 1/2	43 1/2	29	33	38	"

Dress D	56	56	56	44 ¹ / ₄	49	54	"
Side length							
Knickers A	28 ³ / ₄	29 ¹ / ₄	29 ³ / ₄	22 ¹ / ₂	25 ¹ / ₂	27 ¹ / ₂	"
Pants B, C	41 ¹ / ₂	42	42 ¹ / ₂	31 ¹ / ₄	35 ¹ / ₄	38 ³ / ₄	"
Note: Measurement at bustline and hipline are indicated on pattern tissue.							
Bottom width							
Dress D	67	67	67	52	56	61	"
Width, each leg							
Pants B, C	16	17	18	13	13 ³ / ₄	14 ³ / ₄	"

Fabric widths given in centimeters.

SIZES	Adults'			Boys' or Girls'			
	<u>Small</u>	<u>Medium</u>	<u>Large</u>	<u>6-7</u>	<u>8-10</u>	<u>12-14</u>	
Bust/Chest	83-87	92-97	102-107	64-66	69-73	76-81	cm
Coat A							
115cm**	2.4	2.4	2.7	2.1	2.2	2.3	m
18 Buttons 16mm (Adult); 18 Buttons 13mm (Child)							
Fusible Interfacing (Optional) - 53 thru 64cm, 1.20m							
Knickers A							
115cm**	1.6	1.6	1.6	1.4	1.6	1.6	m
2 Wide Buckles 3.2cm; Wide Elastic 2.5cm, 0.95m							
Cuff Fusible Interfacing - 53 thru 64cm, 0.70m							
Vest A							
115cm**	0.8	0.8	0.9	0.7	0.7	0.8	m
5 Buttons 13mm (Adult); 5 Buttons 9mm (Child)							
2.5cm Wide Twill Tape, 0.95m							
Contrast Vest (Dickey and Collar) - Remnant, 53cm x 53cm							
12.5cm Wide Double Edge Flat Lace (Adult), 0.50m							
10cm Wide Double Edge Flat Lace (Child), 0.35m							
2cm Wide VELCRO® Type Fastener, 5cm							
Coat and Pants B							
115cm**	5.0	5.0	5.4	4.0	4.3	4.8	m
2 Buttons 16mm (Adult); 2 Buttons 13mm (Child); 2.5cm Wide Elastic, 0.95m							
Front Fusible Interfacing - 53 thru 64cm, 0.70m							
Vest B							
115cm**	0.7	0.7	0.8	0.6	0.7	0.7	m
5 Buttons 13mm (Adult); 5 Buttons 9mm (Child)							
2.5cm Wide Twill Tape, 0.95m							
Contrast Vest (Dickey and Collar) - Remnant, 53cm x 47cm							
2.2cm Wide Ribbon (Adult), 1.05m; 1.5cm Wide Ribbon (Child), 0.95m							
Fusible Interfacing - 53 thru 64cm, 0.60m							
2cm Wide VELCRO® Type Fastener, 2.5cm							

Hat B

180cm Wide Felt, 0.70m
 38 thru 46cm Wide Fusible Webbing, 1.30m
 Heavyweight Fusible Interfacing (for Brim) - 53 thru 56cm, 0.50m

Coat C

115cm**	1.9	2.0	2.1	1.8	1.8	1.8	m
---------	-----	-----	-----	-----	-----	-----	---

Front Fusible Interfacing - 53 thru 64cm, 0.70m

Pants C

115cm**	2.3	2.4	2.4	2.2	2.3	2.3	m
---------	-----	-----	-----	-----	-----	-----	---

2.5cm Wide Elastic, 0.95m

Vest C

115cm**	0.8	0.8	0.9	0.7	0.7	0.8	m
---------	-----	-----	-----	-----	-----	-----	---

5 Buttons 13mm (Adult); 5 Buttons 9mm (Child)
 2.5cm Wide Twill Tape, 0.95m

Contrast Vest (Dickey and Collar) - Remnant, 53cm x 47cm

2.2cm Wide Ribbon (Adult), 1.05m
 1.5cm Wide Ribbon (Child), 0.95m

Fusible Interfacing - 53 thru 64cm, 0.60m

2cm Wide VELCRO® Type Fastener, 2.5cm

Star Applique (Optional) - Felt Remnant, 6cm x 6cm (for Each Star)

Fusible Webbing Remnant, 6cm x 6cm (for Each Star)

Hat C

180cm Wide Felt, 0.70m
 38 thru 46cm Wide Fusible Webbing, 1.50m
 Heavyweight Fusible Interfacing (for Brim) - 53 thru 56cm, 0.50m

Felt Remnants: Contrast Band, - 8cm x 69cm

Contrast Stripe, 25cm x 43cm

Contrast Stars, 13cm x 25cm

38cm Wide Fusible Webbing, 1.85m

Dress and Drape D

115cm**	8.0	8.0	8.0	7.1	7.1	7.1	m
---------	-----	-----	-----	-----	-----	-----	---

3mm Wide Cording (Adult), 4.15m; 3mm Wide Cording (Child), 3.70m

Crown and Torch D

180cm Wide Felt: Torch (Green Contrast), 0.50m
 Flame (Orange Contrast) - Remnant, 20cm x 81cm

Purchased Decorative Pin; Polyester Fiberfill

Fusible Interfacing - 53 thru 64cm, 0.70m

1.5cm Wide VELCRO® Type Fastener, 4.5cm

FINISHED GARMENT MEASUREMENTS

Back length from normal neckline

Coat A	98	100	103	71	79	89	cm
Coat B	110	113	116	79	89	100	cm
Coat C	105	108	110	74	84	97	cm
Dress D	142	142	142	112	124	137	cm

Side length

Knickers A	73	74	76	57	65	70	cm
Pants B, C	105	107	108	79	90	98	cm

Note: Measurement at bustline and hipline are indicated on pattern tissue.

Bottom width

Dress D	170	170	170	132	142	155	cm
---------	-----	-----	-----	-----	-----	-----	----

Width, each leg

Pants B, C	41	43	46	33	35	37	cm
------------	----	----	----	----	----	----	----