

# M8046

16 PIECES/PIEZAS

Easy  
Facile  
Fácil

## MISSES' ROMPER, JUMPSUITS AND BELT

**Fabrics:** Twill, Linen, Cotton Blends, Denim. Extra fabric needed to match plaids, stripes or one-way design fabrics.

**Notions:** Nine 1/2" (1.3cm) Buttons. **C:** 1 1/4 yds. (1.2m) of 1" (2.5cm) Elastic.

**D:** One 2 1/2" (6.5cm) Buckle.

Sizes	6	8	10	12	14	16	18	20	22	
<b>A</b>										
45"***	2 1/4	2 3/8	2 3/8	2 3/8	2 1/2	2 7/8	2 7/8	3	3 1/8	Yd
60"***	2	2	2	2	2	2	2 1/8	2 1/8	2 1/8	"

<b>B</b>										
45"***	3 1/4	3 3/8	3 3/8	3 1/2	3 1/2	4 1/4	4 1/4	4 1/4	4 1/4	Yd
60"***	2 5/8	2 5/8	2 5/8	2 5/8	2 5/8	2 5/8	3 1/8	3 1/8	3 1/8	"

<b>C</b>										
45"***	3 3/4	3 3/4	3 3/4	3 3/4	3 3/4	4 1/2	4 1/2	4 1/2	4 1/2	Yd
60"***	2 7/8	2 7/8	2 7/8	2 7/8	2 7/8	2 7/8	3 1/4	3 1/4	3 1/4	"

**Fusible Interfacing A,B,C- 18, 20"- 1 yd.**

<b>D</b>										
45, 60"****	1 3/8	1 3/8	1 3/8	1 3/8	1 1/2	1 1/2	1 5/8	1 5/8	1 3/4	Yd

**Fusible Interfacing D**

18, 20"	1 3/8	1 3/8	1 3/8	1 1/2	1 1/2	1 1/2	1 5/8	1 5/8	1 3/4	Yd
---------	-------	-------	-------	-------	-------	-------	-------	-------	-------	----

### FINISHED GARMENT MEASUREMENTS

<b>A,B,C Bust</b>	35 1/2	36 1/2	37 1/2	39	41	43	45	47	49	In
<b>A,B,C Hip</b>	36 1/2	37 1/2	38 1/2	40	42	44	46	48	50	"
<b>A Leg Width</b>	21	21 1/2	22	22 1/2	23	23 1/2	24	24 1/2	25	"
<b>B Leg Width</b>	11	11 1/2	12	12 1/2	13	13 1/2	14	14 1/2	15	"
<b>A Side Length</b>	14 1/2	14 1/2	14 1/2	14 1/2	14 1/2	14 1/2	14 1/2	14 1/2	14 1/2	"
<b>B,C Side Length</b>	37 1/2	37 1/2	37 1/2	37 1/2	37 1/2	37 1/2	37 1/2	37 1/2	37 1/2	"

### SALOPETTE, JUMPSUITS ET CEINTURE POUR JEUNE FEMME

### MAMELUCO, JUMPSUITS Y CINTURÓN PARA JÓVENES Y SEÑORAS

Tailles/Tallas	6	8	10	12	14	16	18	20	22
<b>Françaises</b>	34	36	38	40	42	44	46	48	50
<b>Europeas</b>	32	34	36	38	40	42	44	46	48

<b>A</b>										
115cm***	2.1	2.2	2.2	2.2	2.3	2.7	2.7	2.7	2.9	m
150cm***	1.9	1.9	1.9	1.9	1.9	1.9	2.0	2.0	2.0	"

<b>B</b>										
115cm***	3.0	3.1	3.1	3.2	3.2	3.9	3.9	3.9	3.9	m
150cm***	2.4	2.4	2.4	2.4	2.4	2.4	2.9	2.9	2.9	"

<b>C</b>										
115cm***	3.5	3.5	3.5	3.5	3.5	4.2	4.2	4.2	4.2	m
150cm***	2.7	2.7	2.7	2.7	2.7	2.7	3.0	3.0	3.0	"

**Entoilage Thermocollant A,B,C/ Entretela Termoadhesiva A,B,C- 46, 51cm- 1.0m**

<b>D</b>										
115, 150cm***	1.3	1.3	1.3	1.3	1.4	1.4	1.5	1.5	1.6	m

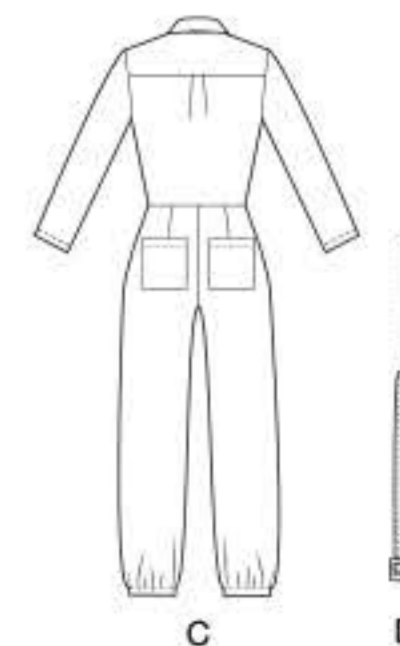
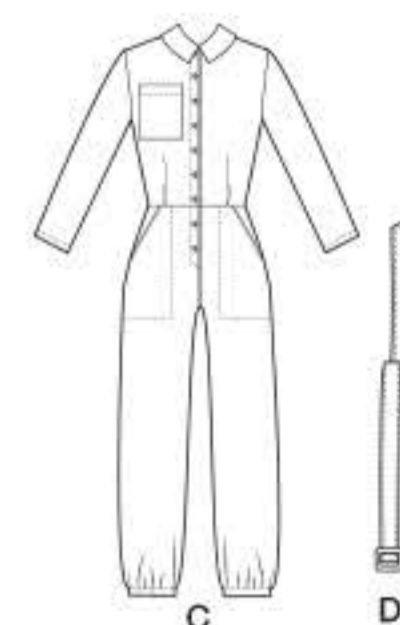
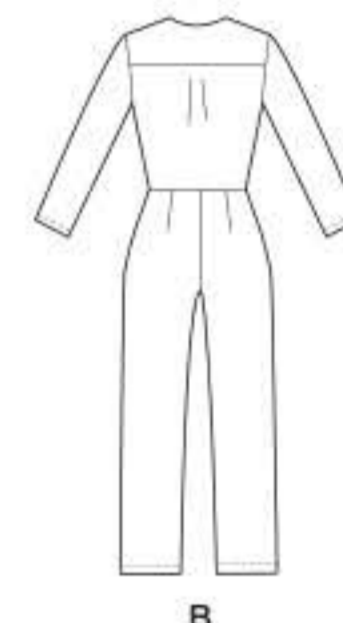
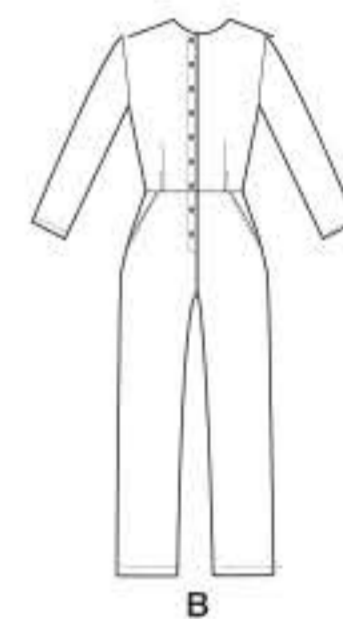
**Entoilage Thermocollant D/ Entretela Termoadhesiva D**

46, 51cm	1.3	1.3	1.3	1.4	1.4	1.4	1.5	1.5	1.6	m
----------	-----	-----	-----	-----	-----	-----	-----	-----	-----	---

\*with nap \*\*without nap \*\*\*with or without nap

\*avec sens \*\*sans sens \*\*\*avec ou sans sens

\*con pelusa \*\*sin pelusa \*\*\*con o sin pelusa



©2020 McCall's® a CSS Industries, Inc. brand, Berwick, PA 18603. All rights reserved. Trademarks Reg. U.S. Pat. & TM Off. Marca Registrada. Sold for individual home use only and not for commercial or manufacturing purposes. www.mccallpattern.com Reserve à un usage personnel. Utilisation commerciale ou industrielle strictement interdite.

MADE IN U.S.A. FABRIQUE AUX ÉTATS-UNIS.



M8046/A5

1

8