

M8048

14 PIECES/PIEZAS

Easy
Facile
Fácil

MISSES' JACKETS with A/B, C, D cup sizes

Fabrics: Crepes, Wool Crepes, Satin, Brocades. **Lining** in Lining Fabric. Extra fabric needed to match plaids, stripes or one-way design fabrics.

Notions: Three 3/8" (2cm) Buttons.

Sizes	6	8	10	12	14	16	18	20	22	
-------	---	---	----	----	----	----	----	----	----	--

A										
45****	2 1/8	2 1/4	2 1/4	2 1/4	2 3/8	2 5/8	2 5/8	2 5/8	2 3/4	Yd
60****	1 5/8	1 3/4	1 3/4	1 3/4	1 3/4	1 7/8	1 7/8	2 1/8	2 1/8	"
Lining A- 45***	1 5/8	1 3/4	1 3/4	1 3/4	1 3/4	2	2	2	2 1/8	"

B										
45****	2 3/8	2 3/8	2 1/2	2 1/2	3	3	3	3 1/8	3 1/8	Yd
60****	1 3/4	1 7/8	1 7/8	1 7/8	2 1/8	2 1/4	2 1/4	2 1/4	2 1/4	"
Lining B- 45***	1 7/8	2	2	2 1/8	2 1/8	2 5/8	2 1/2	2 1/2	2 1/2	"

C										
45****	2 3/4	2 3/4	2 3/4	2 7/8	2 7/8	3 1/8	3 1/4	3 3/8	3 1/2	Yd
60****	2 1/4	2 1/4	2 1/4	2 3/8	2 3/8	2 1/2	2 5/8	2 5/8	2 5/8	"
Lining C- 45***	2 1/4	2 1/4	2 1/4	2 3/8	2 3/8	2 3/4	2 3/4	2 7/8	2 7/8	"

Fusible Interfacing A,B,C										
18, 20"	1	1	1	1	1	1	1	1 1/8	1 1/4	Yd

FINISHED GARMENT MEASUREMENTS

A/B Bust Cup	35 1/2	36 1/2	37 1/2	39	41	43	45	47	49	In
C Bust Cup	36 1/2	37 1/2	38 1/2	40	42	44	46	48	50	"
D Bust Cup	37 1/2	38 1/2	39 1/2	41	43	45	47	49	51	"
A,C Hip	38 1/2	39 1/2	40 1/2	42	44	46	48	50	52	"
Back length from base of neck:										
A,B	27 1/2	27 3/4	28	28 1/4	28 1/2	28 3/4	29	29 1/4	29 1/2	In

VESTES POUR JEUNE FEMME/ CHAQUETAS PARA JÓVENES Y SEÑORAS

Tailles/ Tallas	6	8	10	12	14	16	18	20	22
Françaises	34	36	38	40	42	44	46	48	50
Europeas	32	34	36	38	40	42	44	46	48

A										
115cm***	2.0	2.1	2.1	2.1	2.2	2.4	2.4	2.4	2.6	m
150cm***	1.5	1.6	1.6	1.6	1.6	1.8	1.8	2.0	2.0	"
Doublure A/ Forro A										
115cm**	1.5	1.6	1.6	1.6	1.6	1.9	1.9	1.9	2.0	m

B										
115cm***	2.2	2.2	2.3	2.3	2.7	2.7	2.7	2.9	2.9	m
150cm***	1.6	1.8	1.8	1.8	2.0	2.1	2.1	2.1	2.1	"
Doublure B/ Forro B										
115cm**	1.8	1.9	1.9	2.0	2.0	2.2	2.3	2.3	2.3	m

C										
115cm***	2.6	2.6	2.6	2.7	2.7	2.9	3.0	3.1	3.2	m
150cm***	2.1	2.1	2.1	2.2	2.2	2.3	2.4	2.4	2.4	"
Doublure C/ Forro C										
115cm**	2.1	2.1	2.2	2.2	2.2	2.6	2.6	2.7	2.7	m

Entoilage Thermocollant A,B,C/ Entretela Termoadhesiva A,B,C										
46, 51cm	1.0	1.0	1.0	1.0	1.0	1.0	1.0	1.1	1.2	m

*with nap **with out nap ***with or without nap
*con pelusa **sin pelusa ***con o sin pelusa

*avec sens **sans sens ***avec ou sans sens



A



A



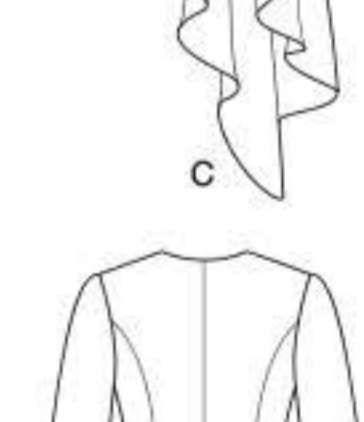
B



B



C



C



C



©2020 McCall's® a CSS Industries, Inc. brand, Berwick, PA 18603. All rights reserved. Trademarks Reg. U.S. Pat. & TM Off. Marca Registrada. Sold for individual home use only and not for commercial or manufacturing purposes. www.mccallpattern.com Reserve à un usage personnel. Utilisation commerciale ou industrielle strictement interdite.

MADE IN U.S.A. FABRIQUE AUX ETATS-UNIS.



M8048/A5

1