

M8064 9PIECES/PIEZAS

MISSES' DRESSES

Suggested Fabrics: Stretch knits such as Interlock, Cotton Jersey, Cotton Knits.

Sizes	XS	S	M	L	XL	XXL
	4-6	8-10	12-14	16-18	20-22	24-26
Sizes-European	30-32	34-36	38-40	42-44	46-48	50-52

A	B	C	D	E	F	
60"*	60"*	60"*	60"*	60"*	60"*	Yd
1½	2	2	2	1½	3½	
1½	2¾	2	2¾	1½	3½	
1⅞	2¾	2	2¾	1⅞	3½	
2⅞	2⅞	2½	2⅞	2½	3½	
2½	3	2½	2½	2½	3½	

FINISHED GARMENT MEASUREMENTS

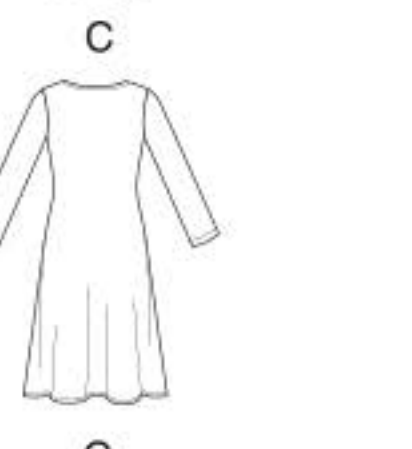
A,B,C,D,E,F Bust	31½	33½	37	41	45	49	ln
A,B,C,D,E,F Hip	39	41	44½	48½	52½	56½	"
A,C,E Width	54	56	59½	63½	67½	71½	"
B,D Width	63	65	68½	72½	76½	80½	"
F Width	78	80	83½	87½	91½	95½	"
Back length from base of neck:							
A,C,E	36½	37	37½	38	38½	39	ln
B,D	43½	44	44½	45	45½	46	"
F	54½	55	55½	56	56½	57	"

ROBES POUR JEUNE FEMME/ VESTIDOS PARA JÓVENES Y SEÑORAS

Tailles/Tallas	TP/ XP	P	M	G	TG/ XG	TTG/ XXG
	4-6	8-10	12-14	16-18	20-22	24-26
Françaises	32-34	36-38	40-42	44-46	48-50	52-54
Europeas	30-32	34-36	38-40	42-44	46-48	50-52
A	B	C	D	E	F	
150cm*	150cm*	150cm*	150cm*	150cm*	150cm*	m
1.4	1.9	1.9	1.9	1.4	3.2	
1.4	2.6	1.9	2.6	1.4	3.2	
1.5	2.6	1.9	2.6	1.8	3.2	
2.0	2.7	2.0	2.6	2.2	3.2	
2.3	2.7	2.3	2.6	2.2	3.2	
2.3	2.8	2.3	2.7	2.3	3.2	

*with nap **without nap ***with or without nap
*con pelusa **sin pelusa ***con o sin pelusa

*avec sens **sans sens ***avec ou sans sens



4" (10cm) OF CROSSWISE FOLDED KNIT MUST STRETCH FROM HERE
(10cm) DE JERSEY PLIÉ SUR LE TRAVERS DOIVENT S'ÉTIRER D'ICI
(10cm) DE TEJIDO DE PUNTO DOBLADO TRANSVERSALMENTE DEBEN ESTIRARSE DESDE ACA

TO HERE OR MORE
À AU MOINS LÀ
HASTA ACA O MÁS



©2020 McCall's® a CSS Industries, Inc. brand, Berwick, PA 18603. All rights reserved. Trademarks Reg. U.S. Pat. & TM Off. Marca Registrada. Sold for individual home use only and not for commercial or manufacturing purposes. www.mccallpattern.com Reserve à un usage personnel. Utilisation commerciale ou industrielle strictement interdite.



M8064/Y

1

5