



©2020 McCall's® a CSS Industries, Inc. brand, Berwick, PA 18603. All rights reserved. Trademarks Reg. U.S. Pat. & TM Off. Marca Registrada. Sold for individual home use only and not for commercial or manufacturing purposes. www.mccallpattern.com Reserve à un usage personnel. Utilisation commerciale ou industrielle strictement interdite.

MADE IN U.S.A. FABRIQUE AUX ETATS-UNIS.



M8070

9 PIECES/PIEZAS

Easy
Facile
Fácil

MISSES/ MEN'S TOPS

Suggested Fabrics: Moderate Stretch Knits (35% cross grain) such as: Sweatshirt Fleece, Fleece, French Terry, Cotton Knits.

Notions: **C:** 2¼ yds. (2.1m) of Twill Tape. **D:** 4½ yds. (4.2m) of Twill Tape, One Star Appliqué. **C,D:** Two Metal Grommets.

Sizes	S	M	L	XL	XXL	XXXL
Sizes- European	34-36	38-40	42-44	46-48	50-52	54-56

A	S	M	L	XL	XXL	XXXL	Yd
60"*	1⅞	1⅞	2	2	2⅞	2⅞	

B	S	M	L	XL	XXL	XXXL	Yd
60"*	2¼	2¼	2¼	2¼	3⅞	3¼	

C	S	M	L	XL	XXL	XXXL	Yd
60"*	2	2	2	2¼	2¾	2¾	

Contrast C	S	M	L	XL	XXL	XXXL	Yd
60"*	⅝	⅝	¾	¾	¾	¾	

D	S	M	L	XL	XXL	XXXL	Yd
60"*	2⅝	2⅝	2⅝	2¾	3½	3½	

FINISHED GARMENT MEASUREMENTS

A,B,C,D Bust/ Chest	S	M	L	XL	XXL	XXXL	Yd
	42	46	50	54	58	62	

A,B,C,D Width	S	M	L	XL	XXL	XXXL	"
	36	40	44	48	52	56	

Back length from back of neck:

A,B,C,D	S	M	L	XL	XXL	XXXL	Yd
	22½	23	23½	24	24½	25	

HAUTS POUR JEUNE FEMME/ HOMME

TOPS PARA JÓVENES Y SEÑORAS/ HOMBRES

Tailles/ Tallas	P	M	G	TG/ XG	TTG/ XXG	TTTG/ XXXG
Françaises	36-38	40-42	44-46	48-50	52-54	56-58
Europeas	34-36	38-40	42-44	46-48	50-52	54-56

A	P	M	G	TG/ XG	TTG/ XXG	TTTG/ XXXG	m
150cm*	1.8	1.8	1.9	1.9	2.7	2.7	

B	P	M	G	TG/ XG	TTG/ XXG	TTTG/ XXXG	m
150cm*	2.1	2.1	2.1	2.1	2.9	3.0	

C	P	M	G	TG/ XG	TTG/ XXG	TTTG/ XXXG	m
150cm*	1.9	1.9	1.9	2.1	2.6	2.6	

Contraste C	P	M	G	TG/ XG	TTG/ XXG	TTTG/ XXXG	m
150cm*	0.6	0.6	0.7	0.7	0.7	0.7	

D	P	M	G	TG/ XG	TTG/ XXG	TTTG/ XXXG	m
150cm*	2.4	2.4	2.4	2.6	3.2	3.2	

*with nap **without nap ***with or without nap

*con pelusa **sin pelusa ***con o sin pelusa

*avec sens **sans sens ***avec ou sans sens



A



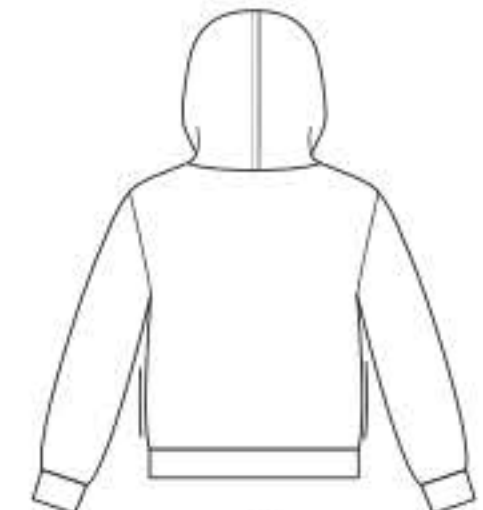
B



AB



C



C



D



D

4" of crosswise folded knit must **STRETCH** from here
10 cm de tricot plié sur le travers doivent s'étirer d'ici
10 cm de tejido de punto doblado al través deben estirarse desde acá

To Here (35%)
jusqu'ici (35%)
hasta acá (35%)

M8070/XM

1



8