

M7944

MISSES'/WOMEN'S DRESSES: Sleeveless, buttoned dress is fitted through bust and has topstitching and hem variations. **B:** Wrong side of fabric may show.

ROBES POUR JEUNE FEMME/FEMME: Robe sans manches, boutonnée, ajustée sur la poitrine, à variations de surpiqûre et d'ourlet. **B:** Le envers du tissu peut être visible.
VESTIDOS PARA JÓVENES Y SEÑORAS/DAMAS: Vestido sin mangas, abotonado, entallado en el busto, con variaciones de pespunte de adorno y de dobladillo. **B:** El revés de la tela puede ser visible.

Combinations: **B5**(8-10-12-14-16), **RR**(18W-20W-22W-24W)

SUGGESTED FABRICS: Linen, Crepe, Gauze, Lightweight Denim.

Séries/Combinaciones: **B5**(8-10-12-14-16), **RR**(18W-20W-22W-24W)

TISSUS CONSEILLÉS: Toile de lin, Crêpe, Gaze, Denim léger.

TELAS SUGERIDAS: Lino, Crepé, Gasa, Denim liviano.

SIZES	Misses'					Women's			
	8	10	12	14	16	18W	20W	22W	24W
A 45****	2 1/8	2 1/8	2 1/4	2 1/4	2 1/4	3 1/8	3 1/8	3 1/4	3 1/4
60****	1 5/8	1 5/8	1 5/8	1 3/4	1 3/4	2 1/4	2 1/4	2 1/4	2 1/4
FUSIBLE INTERFACING A									
18", 20"	1 3/4	1 3/4	1 3/4	1 3/4	1 3/4	2	2	2	2
B 45****	2 1/4	2 1/4	2 1/4	2 3/8	2 1/2	3 1/8	3 1/4	3 3/8	3 3/8
60****	1 7/8	1 7/8	1 7/8	1 7/8	1 7/8	2 1/4	2 3/8	2 3/8	2 1/2
FUSIBLE INTERFACING B									
18", 20"	1 7/8	1 7/8	1 7/8	1 7/8	1 7/8	2 1/8	2 1/8	2 1/8	2 1/8
C 45****	2 7/8	2 7/8	2 7/8	3	3	3 7/8	3 7/8	3 7/8	3 7/8
60****	2	2	2	2 1/8	2 1/8	2 7/8	2 7/8	3	3
FUSIBLE INTERFACING C									
18", 20"	2 1/8	2 1/8	2 1/8	2 1/8	2 1/8	2 3/8	2 3/8	2 3/8	2 3/8

NOTIONS: A, B, C: 3/4" Button: Eight for A and Nine for B, C.

FINISHED GARMENT MEASUREMENTS

Measurement at bustline

A, B, C 35 1/2 36 1/2 38 40 42 44 46 48 50

Measurement at hipline

A, B, C 37 38 39 1/2 41 1/2 43 1/2 46 48 50 52

Back length from base of neck

A 35 1/4 35 1/2 35 3/4 36 36 1/4 37 37 1/4 37 1/2 37 3/4

B 45 1/4 45 1/2 45 3/4 46 46 1/4 47 47 1/4 47 1/2 47 3/4

C 48 1/4 48 1/2 48 3/4 49 49 1/4 50 50 1/4 50 1/2 50 3/4

*With Nap **Without Nap ***With or Without Nap

TAILLES/TALLAS	Jeune Femme/Jóvenes y Señoras					Femme/Damas			
	8	10	12	14	16	18W	20W	22W	24W
A 115cm***	2.00	2.00	2.10	2.10	2.10	2.90	2.90	3.00	3.00
150cm***	1.50	1.50	1.50	1.60	1.60	2.10	2.10	2.10	2.10
ENTOILAGE THERMOCOLLANT/ENTRETELA TERMOADHESIVA A									
46, 51cm	1.60	1.60	1.60	1.60	1.60	1.90	1.90	1.90	1.90
B 115cm***	2.10	2.10	2.10	2.20	2.30	2.90	3.00	3.10	3.10
150cm***	1.80	1.80	1.80	1.80	1.80	2.10	2.20	2.20	2.30
ENTOILAGE THERMOCOLLANT/ENTRETELA TERMOADHESIVA B									
46, 51cm	1.80	1.80	1.80	1.80	1.80	2.00	2.00	2.00	2.00
C 115cm***	2.70	2.70	2.70	2.80	2.80	3.60	3.60	3.60	3.60
150cm***	1.90	1.90	1.90	2.00	2.00	2.70	2.70	2.80	2.80
ENTOILAGE THERMOCOLLANT/ENTRETELA TERMOADHESIVA C									
46, 51cm	2.00	2.00	2.00	2.00	2.00	2.20	2.20	2.20	2.20

MERCERIE: A, B, C: Boutons de 19mm: 8 pour A et 9 pour B, C.

MERCERÍA: A, B, C: Botones de 19mm: 8 para A y 9 para B, C.

MESURES DU VÊTEMENT FIN/MEDIDAS DE LA PRENDA ACABADA

Mesure à la poitrine/Contorno de busto

A, B, C 90 93 97 102 107 112 117 122 127

Mesure aux hanches/Contorno de caderas

A, B, C 94 97 100 105 110 117 122 127 132

Longueur - dos, votre nuque à l'ourlet/Largo de espalda desde la nuca

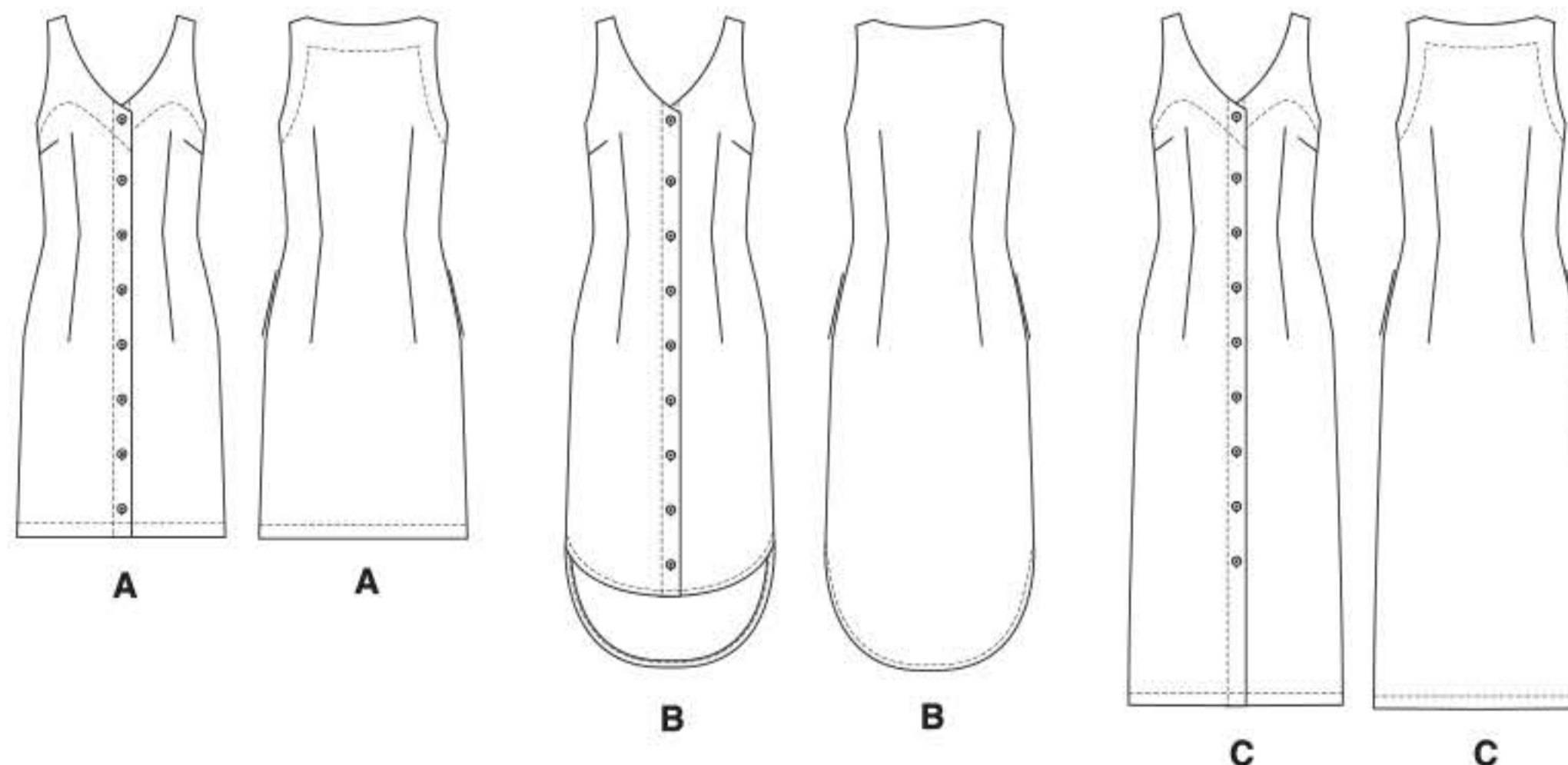
A 90 90 91 92 92 94 95 95 96

B 115 116 116 117 117 120 120 121 121

C 123 123 124 125 125 127 128 128 129

*Avec Sens **Sans Sens ***Avec ou Sans Sens

*Con Pellillo **Sin Pellillo ***Con o Sin Pellillo



©2019 McCall's® a CSS Industries, Inc. brand, Berwick, PA 18603. All rights reserved. Trademarks Reg. U.S. Pat. & TM Off. Marca Registrada. Sold for individual home use only and not for commercial or manufacturing purposes. www.mccallpattern.com Reserve à un usage personnel. Utilisation commerciale ou industrielle strictement interdite.



MADE IN U.S.A. FABRIQUÉ AUX ÉTATS-UNIS.