

## Average/Moins Facile/Intermedio

# M7954

**MISSES' SPECIAL OCCASION:** Dresses (with shoulder straps or drawstring halter) have close-fitting, lined bodice. Skirts are scalloped edge, circular or ankle length. Create your own design with mix and match pattern pieces. **NOTE:** Tips to embellish your finished dress are included.

**OCASSION SPÉCIALE POUR JEUNE FEMME:** Robes (à bretelles ou à dos nu avec cordon) à corsage moultant, doublé. Jupes à bord festonné, circulaires ou à la cheville. Créez votre propre modèle avec les pièces de patron à mixer. **N.B.** Des astuces pour orner votre robe terminée y compris.

**OCASIÓN ESPECIAL PARA JÓVENES Y SEÑORAS:** Vestidos (con tirantes o sin espalda con cordón), con corpiño ceñido y forro. Faldas con borde festoneado, circulares o al tobillo. Cree su propio diseño con las piezas de patrón para combinar. **NOTA:** Se incluyen consejos para adornar su vestido acabado.

Combinations: **AX5(4-6-8-10-12), D5(12-14-16-18-20)**

**SUGGESTED FABRICS:** Lace, Sheers, Eyelet. **Skirt 3:** Double-edged scalloped Eyelet or Lace. **Underlining:** Crepe, Lawn, Cotton Blends. **Lining:** Lining Fabrics, Lawn.

Séries/Combinaciones: **AX5(4-6-8-10-12), D5(12-14-16-18-20)**

**TISSUS CONSEILLÉS:** Dentelle, Tissus transparents, Broderie anglaise. **Jupe 3:** Dentelle ou broderie anglaise à double bord festonné. **Triplure:** Crêpe, Linon, Cotonnade. **Doublure:** Tissus à doublure, Linon.

**TELAS SUGERIDAS:** Encaje, Telas transparentes, Broderie. **Falda 3:** Encaje o broderie con doble borde festoneado. **Forro de refuerzo:** Crepé, Linón, Mezclas de algodón. **Forro:** Telas para forro, Linón.

| SIZES           | 4     | 6     | 8     | 10    | 12    | 14    | 16    | 18    | 20    |
|-----------------|-------|-------|-------|-------|-------|-------|-------|-------|-------|
| <b>BODICE 1</b> |       |       |       |       |       |       |       |       |       |
| 45****          | 1/2   | 1/2   | 5/8   | 5/8   | 5/8   | 5/8   | 3/4   | 3/4   | 7/8   |
| 60****          | 1/2   | 1/2   | 1/2   | 1/2   | 1/2   | 5/8   | 5/8   | 5/8   | 5/8   |
| <b>BODICE 2</b> |       |       |       |       |       |       |       |       |       |
| 45****          | 3/4   | 3/4   | 3/4   | 3/4   | 7/8   | 7/8   | 1     | 1     | 1 1/8 |
| 60****          | 3/4   | 3/4   | 3/4   | 3/4   | 3/4   | 3/4   | 3/4   | 3/4   | 3/4   |
| <b>SKIRT 3</b>  |       |       |       |       |       |       |       |       |       |
| 45", 60"        | 1 3/8 | 1 1/2 | 1 1/2 | 1 1/2 | 1 1/2 | 1 5/8 | 1 3/4 | 1 3/4 | 1 3/4 |
| <b>SKIRT 4</b>  |       |       |       |       |       |       |       |       |       |
| 45****          | 2 3/8 | 2 3/8 | 2 1/2 | 2 1/2 | 2 1/2 | 2 5/8 | 2 5/8 | 2 5/8 | 2 3/4 |
| 60****          | 1 5/8 | 1 5/8 | 1 5/8 | 1 5/8 | 1 5/8 | 1 5/8 | 1 3/4 | 1 3/4 | 1 3/4 |
| <b>SKIRT 5</b>  |       |       |       |       |       |       |       |       |       |
| 45****          | 2 1/2 | 2 1/2 | 2 1/2 | 2 1/2 | 2 1/2 | 2 1/2 | 2 1/2 | 2 1/2 | 2 1/2 |
| 60****          | 1 3/8 | 1 3/8 | 1 3/8 | 1 3/8 | 1 1/2 | 2     | 2 3/8 | 2 1/2 | 2 1/2 |

**NOTE:** See Sewing Directions for Underlining and Lining.

**NOTIONS:** One 14" Invisible Zipper and One Hook and Eye. **Bodice 1:** 2 yds. of 1/8" Cording.

### FINISHED GARMENT MEASUREMENTS

Back length from waist

Skirt 3 - 18 Ins.

Skirt 4 - 19 Ins.

Skirt 5 - 38 1/2 Ins.

\*With Nap \*\*Without Nap \*\*\*With or Without Nap

| TAILLES/TALLAS           | 4    | 6    | 8    | 10   | 12   | 14   | 16   | 18   | 20   |
|--------------------------|------|------|------|------|------|------|------|------|------|
| <b>CORSAGE/CORPIÑO 1</b> |      |      |      |      |      |      |      |      |      |
| 115cm***                 | 0.50 | 0.50 | 0.60 | 0.60 | 0.60 | 0.60 | 0.70 | 0.70 | 0.80 |
| 150cm***                 | 0.50 | 0.50 | 0.50 | 0.50 | 0.50 | 0.60 | 0.60 | 0.60 | 0.60 |
| <b>CORSAGE/CORPIÑO 2</b> |      |      |      |      |      |      |      |      |      |
| 115cm***                 | 0.70 | 0.70 | 0.70 | 0.70 | 0.80 | 0.80 | 1.00 | 1.00 | 1.10 |
| 150cm***                 | 0.70 | 0.70 | 0.70 | 0.70 | 0.70 | 0.70 | 0.70 | 0.70 | 0.70 |
| <b>JUPE/FALDA 3</b>      |      |      |      |      |      |      |      |      |      |
| 115, 150cm*              | 1.30 | 1.40 | 1.40 | 1.40 | 1.40 | 1.50 | 1.60 | 1.60 | 1.60 |
| <b>JUPE/FALDA 4</b>      |      |      |      |      |      |      |      |      |      |
| 115cm***                 | 2.20 | 2.20 | 2.30 | 2.30 | 2.30 | 2.40 | 2.40 | 2.40 | 2.60 |
| 150cm*/**                | 1.50 | 1.50 | 1.50 | 1.50 | 1.50 | 1.50 | 1.60 | 1.60 | 1.60 |
| <b>JUPE/FALDA 5</b>      |      |      |      |      |      |      |      |      |      |
| 115cm***                 | 2.30 | 2.30 | 2.30 | 2.30 | 2.30 | 2.30 | 2.30 | 2.30 | 2.30 |
| 150cm***                 | 1.30 | 1.30 | 1.30 | 1.30 | 1.40 | 1.90 | 2.20 | 2.30 | 2.30 |

**N.B.** Reportez-vous au feuillet d'instructions pour le renseignement sur la triplure et la doublure.

**NOTA:** Remítirse a la hoja de instrucciones para la información sobre el forro de refuerzo y el forro.

**MERCERIE:** 1 Fermeture à glissière invisible de 35cm et 1 Agrafe. **Corsage 1:** 1.90m de Cordon de 3mm.

**MERCERÍA:** 1 Cremallera invisible de 35cm y 1 Corchete. **Corpiño 1:** 1.90m de Cordón de 3mm.

### MESURES DU VÊTEMENT FINI/MEDIDAS DE LA PRENDA ACABADA

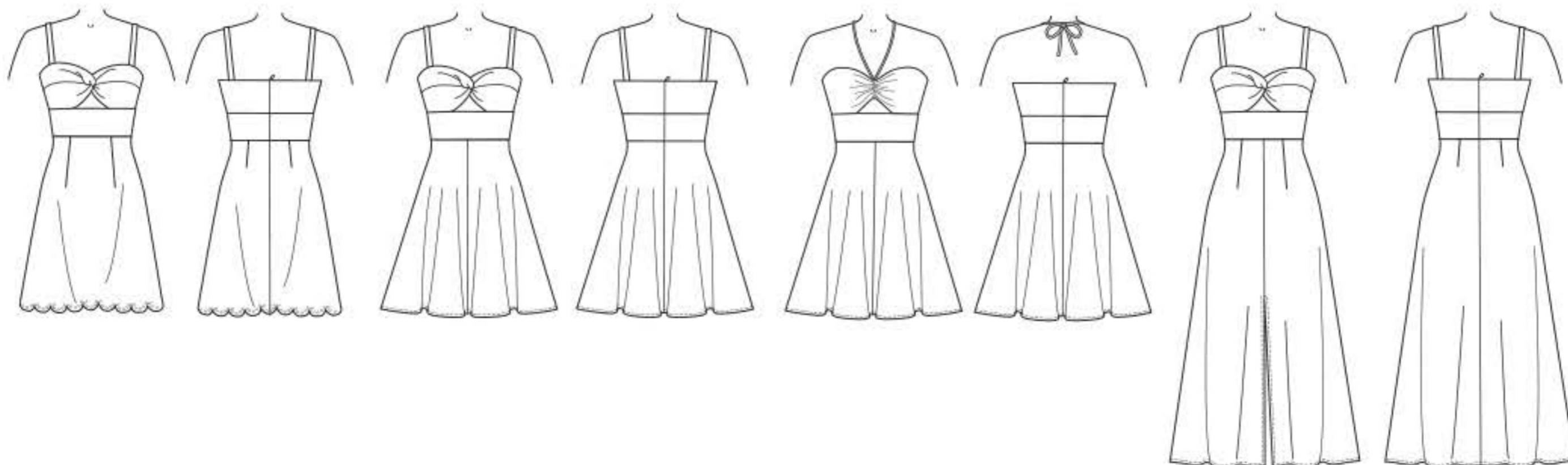
Longueur - dos, taille à l'ourlet/Largo de espalda desde la cintura

Jupe/Falda 3 - 46cm

Jupe/Falda 4 - 48cm

Jupe/Falda 5 - 98cm

\*Avec Sens \*\*Sans Sens \*\*\*Avec ou Sans Sens \*Con Pellillo \*\*Sin Pellillo \*\*\*Con o Sin Pellillo



©2019 **McCall's®** a **CSS Industries, Inc. brand**, Berwick, PA 18603. All rights reserved. Trademarks Reg. U.S. Pat. & TM Off. Marca Registrada. Sold for individual home use only and not for commercial or manufacturing purposes. [www.mccallpattern.com](http://www.mccallpattern.com) Reserve à un usage personnel. Utilisation commerciale ou industrielle strictement interdite.



**MADE IN U.S.A. FABRIQUÉ AUX ÉTATS-UNIS.**