

Average/Moins Facile/Intermedio

M7980

MISSES'/MEN'S SHIRTS: Semi-fitted shirt A, B, C, D has yoke variations, collar, collar band, and patch pockets with buttoned flaps. B, D: Purchased piping trim. D: Purchased appliqués.

CHEMISES POUR JEUNE FEMME/HOMME: Chemise semi-ajustée, A, B, C, D, à variations d'empècement, col, pied de col et poches plaquées à rabat boutonné. B, D: Passepoil acheté. D: Appliqués achetés.

CAMISA PARA JÓVENES Y SEÑORAS/HOMBRES: Camisa semientallada, A, B, C, D, con variaciones de canesú, cuello, banda de cuello y bolsillos de parche con cartera abotonada. B, D: Vivo comprado. D: Aplicaciones compradas.

Combinations:

XM(S-M-L), XN(XL-XXL-XXXL)

SUGGESTED FABRICS: Pre-quilted Fabric. **Contrast:** Cotton Blends.

Lining: Lining Fabrics.

Séries/Combinaciones:

XM(P/P-M/M-G/G), XN(TG/XG-TTG/XXG-TTTG/XXXG)

TISSUS CONSEILLÉS: Tissu matelassé. **Contraste:** Cotonnade. **Doublure:** Tissus à doublure.

TELAS SUGERIDAS: Tela acolchada. **Contraste:** Mezclas de algodón. **Forro:** Telas para forro.

SIZES	S	M	L	XL	XXL	XXXL
	34-36	38-40	42-44	46-48	50-52	54-56
A, B						
45****	2 7/8	2 7/8	3	3 1/8	3 1/2	3 3/4
60****	2	2	2 3/8	2 3/8	2 1/2	2 5/8
FUSIBLE INTERFACING A, B						
18", 20"	1 1/4	1 3/8	1 3/8	1 3/8	1 3/8	1 1/2
C						
45****	3 1/8	3 1/4	3 3/8	3 1/2	3 7/8	4
60****	2 1/8	2 3/8	2 5/8	2 3/4	2 7/8	2 7/8
D						
45****	2 7/8	2 7/8	2 7/8	3	3 3/8	3 1/2
60****	2	2	2 3/8	2 3/8	2 1/2	2 1/2
CONTRAST D (Yoke) - 45", 60****						
	1/2	1/2	5/8	5/8	5/8	5/8

SIZES	S	M	L	XL	XXL	XXXL
	34-36	38-40	42-44	46-48	50-52	54-56
FUSIBLE INTERFACING C, D						
18", 20"	1 1/4	1 3/8	1 3/8	1 3/8	1 1/2	1 1/2

NOTIONS: A, B, C, D: 1/2" Button: Thirteen for A, B, C and Eleven for D. B: 5 yds. of Purchased Piping. D: 4 yds. of Purchased Piping and Appliqués as Desired.

TAILLES/TALLAS	P/P	M/M	G/G	TG/XG	TTG/XXG	TTTG/XXXG
	34-36	38-40	42-44	46-48	50-52	54-56
A, B						
115cm***	2.70	2.70	2.80	2.90	3.20	3.50
150cm***	1.90	1.90	2.20	2.20	2.30	2.40
ENTOILAGE THERMOCOLLANT/ENTRETELA TERMOADHESIVA A, B						
46, 51cm	1.20	1.30	1.30	1.30	1.30	1.40
C						
115cm***	2.90	3.00	3.10	3.20	3.60	3.70
150cm***	2.00	2.20	2.40	2.60	2.70	2.70
D						
115cm***	2.70	2.70	2.70	2.80	3.10	3.20
150cm***	1.90	1.90	2.20	2.20	2.30	2.30
CONTRASTE D (Empiècement)/(Canesú) - 115, 150cm***						
	0.50	0.50	0.60	0.60	0.60	0.60

TAILLES/TALLAS	P/P	M/M	G/G	TG/XG	TTG/XXG	TTTG/XXXG
	34-36	38-40	42-44	46-48	50-52	54-56
ENTOILAGE THERMOCOLLANT/ENTRETELA TERMOADHESIVA C, D						
46, 51cm	1.20	1.30	1.30	1.30	1.40	1.40

MERCERIE: A, B, C, D: Bouton de 13mm: 13 pour A, B, C et 11 pour D. B: 4.60m de Passepoil acheté. D: 3.70m de Passepoil et appliqués achetés comme vous le désirez.

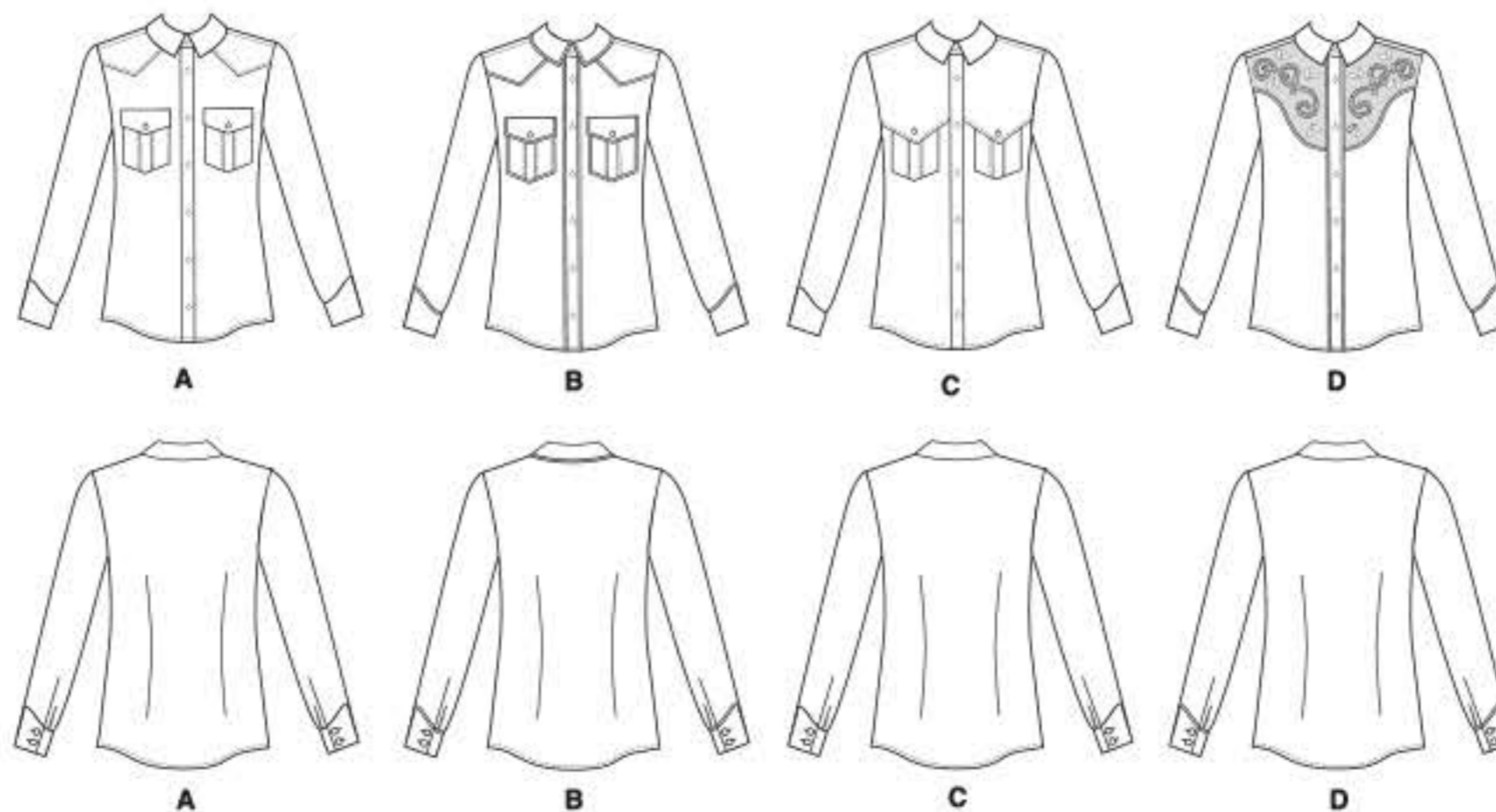
MERCERÍA: A, B, C, D: Botón de 13mm: 13 para A, B, C y 11 para D. B: 4.60m de Vivo comprado. D: 3.70m de Vivo y aplicaciones comprados como desee.

FINISHED GARMENT MEASUREMENTS						
Measurement at chestline						
A, B, C, D	41	45	49	53	57	61
Width, lower edge						
A, B, C, D	40	44	48	52	56	60
Back length from base of neck						
A, B, C, D	27 1/2	28	28 1/2	29	29 1/2	30

MESURES DU VÊTEMENT FINI/MEDIDAS DE LA PRENDA ACABADA						
Mesure à la poitrine/Contorno de busto/pecho						
A, B, C, D	104	115	125	135	145	155
Largeur à l'ourlet/Ancho inferior						
A, B, C, D	102	112	122	132	142	152
Longueur - dos, votre nuque à l'ourlet/Largo de espalda desde la nuca						
A, B, C, D	70	71	72	74	75	76

*With Nap **Without Nap ***With or Without Nap

*Avec Sens **Sans Sens ***Avec ou Sans Sens *Con Peilillo **Sin Peilillo ***Con o Sin Peilillo



©2019 **McCall's®** a **CSS Industries, Inc. brand**, Berwick, PA 18603. All rights reserved. Trademarks Reg. U.S. Pat. & TM Off. Marca Registrada. Sold for individual home use only and not for commercial or manufacturing purposes. www.mccallpattern.com Reserve à un usage personnel. Utilisation commerciale ou industrielle strictement interdite.



MADE IN U.S.A. FABRIQUÉ AUX ÉTATS-UNIS.