

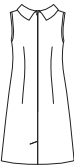
8 PIECES/PIEZAS
Métrages et instructions
de couture en Français à
l'intérieur de l'enveloppe.



A B



C D



E

MISSES' SIX SIZES IN ONE

| | | | | | | | |
|--------------------|-----|-----|-----|-----|-----|----|----|
| Sizes | 8 | 10 | 12 | 14 | 16 | 18 | |
| European Size | 34 | 36 | 38 | 40 | 42 | 44 | |
| Bust | 31½ | 32½ | 34 | 36 | 38 | 40 | In |
| Waist | 24 | 25 | 26½ | 28 | 30 | 32 | " |
| Hip | 33½ | 34½ | 36 | 38 | 40 | 42 | " |
| Back-neck to waist | 15¾ | 16 | 16¼ | 16½ | 16¾ | 17 | " |

| | | | | | | | |
|----------|----|----|----|----|----|----|----|
| A | | | | | | | |
| 45*** | 2¼ | 2¼ | 2% | 2% | 2% | 2% | Yd |
| 60*** | 1% | 1% | 1½ | 1½ | 1½ | 1½ | " |

| | | | | | | | |
|----------|----|----|----|----|----|----|----|
| B | | | | | | | |
| 45*** | 2% | 2% | 2½ | 2¾ | 2% | 2% | Yd |
| 60*** | 1% | 1% | 1¾ | 1¾ | 1¾ | 1¾ | " |

| | | | | | | | |
|----------|----|----|----|----|----|----|----|
| C | | | | | | | |
| 45*** | 2¾ | 2% | 2% | 3% | 3% | 3¼ | Yd |
| 60*** | 1% | 1% | 2 | 2 | 2 | 2 | " |

| | | | | | | | |
|----------|----|----|----|----|---|----|----|
| D | | | | | | | |
| 45*** | 2¾ | 2¾ | 2¾ | 3 | 3 | 3¾ | Yd |
| 60*** | 1% | 1% | 1% | 1½ | 2 | 2 | " |

| | | | | | | | |
|----------|----|----|----|----|----|----|----|
| E | | | | | | | |
| 45*** | 2% | 2¼ | 2¼ | 2½ | 2½ | 2½ | Yd |
| 60*** | 1% | 1% | 1% | 1½ | 1½ | 1½ | " |

Contrast Collar- ¾ yd. of 45" or 60***

A,B,C,D,E Interfacing- ¾ yd. of 20" to 25" lightweight fusible, such as Pellon®

| | | | | | | | |
|---|-----|-----|-----|-----|-----|----|----|
| GARMENT MEASUREMENTS | | | | | | | |
| A,B,C,D,E Bust | 36½ | 37½ | 39 | 41 | 43 | 45 | In |
| Finished back length from base of neck: | | | | | | | |
| A,B,C,D,E | 35¾ | 36 | 36¼ | 36½ | 36¾ | 37 | In |
| A,B,C,D,E Width | 39½ | 40½ | 42 | 44 | 46 | 48 | " |

SUGGESTED FABRICS

Cotton and Cotton Blends, Chambray, Pique, Lightweight Wool and Wool Blends, Silks and Silk Types, Crepe, Crepe De Chine, Satin. A,C also in Double Knits. Allow extra fabric for matching plaids or stripes.

REQUIREMENTS

One 22" invisible zipper.

*without nap **with nap ***with or without nap

JEUNE FEMME: PATRON SIX TAILLES

SEÑORITAS: PATRON SEIS TALLAS

| | | | | | | | |
|-------------------|----|----|----|----|-----|-----|----|
| Tailles / Tallas | 8 | 10 | 12 | 14 | 16 | 18 | |
| Taille Française | 36 | 38 | 40 | 42 | 44 | 46 | |
| Tallas europeas | 34 | 36 | 38 | 40 | 42 | 44 | |
| Poitrine / Busto | 80 | 83 | 87 | 92 | 97 | 102 | cm |
| Taille / Cintura | 61 | 64 | 67 | 71 | 76 | 81 | " |
| Hanches / Caderas | 85 | 88 | 92 | 97 | 102 | 107 | " |

| | | | | | | | |
|---|----|------|------|----|------|----|----|
| Dos (encolure à Taille) / Espalda (escote a cintura) | | | | | | | |
| | 40 | 40.5 | 41.5 | 42 | 42.5 | 43 | cm |

| | | | | | | | | |
|----------|---------|------|------|------|------|------|------|---|
| A | 115cm** | 2.10 | 2.10 | 2.10 | 2.30 | 2.30 | 2.40 | m |
| | 150cm** | 1.30 | 1.30 | 1.30 | 1.30 | 1.30 | 1.40 | " |

| | | | | | | | | |
|----------|---------|------|------|------|------|------|------|---|
| B | 115cm** | 2.10 | 2.20 | 2.30 | 2.50 | 2.60 | 2.60 | m |
| | 150cm** | 1.50 | 1.50 | 1.60 | 1.60 | 1.60 | 1.60 | " |

| | | | | | | | | |
|----------|---------|------|------|------|------|------|------|---|
| C | 115cm** | 2.60 | 2.60 | 2.60 | 2.80 | 2.90 | 2.90 | m |
| | 150cm** | 1.70 | 1.70 | 1.80 | 1.80 | 1.80 | 1.80 | " |

| | | | | | | | | |
|----------|---------|------|------|------|------|------|------|---|
| D | 115cm** | 2.50 | 2.50 | 2.60 | 2.80 | 2.80 | 2.80 | m |
| | 150cm** | 1.70 | 1.70 | 1.70 | 1.70 | 1.80 | 1.80 | " |

| | | | | | | | | |
|----------|---------|------|------|------|------|------|------|---|
| E | 115cm** | 2.00 | 2.00 | 2.00 | 2.20 | 2.30 | 2.30 | m |
| | 150cm** | 1.30 | 1.30 | 1.30 | 1.30 | 1.30 | 1.40 | " |

Col Contrastant- 0.80m de 115cm ou 150cm**

Cuello Contrastante- 0.80m de 115cm o 150cm**

A,B,C,D,E Entoilage-0.40m de 51cm à 64cm léger thermocollant tels que Pellon®

A,B,C,D,E Entretela-0.40m de 51cm a 64cm ligera adhesiva como Pellon®

TISSUS SUGGERES

Coton et cotonnades, Chambray, Piqué, Laine et lainages légers, Soie et tissus soyeux, Crêpe, Crêpe de Chine, Satin. A,C aussi en Jersey double. Prévoyez davantage de tissu pour raccorder les écossois ou rayures.

MERCERIE

Une glissière invisible de 55cm.

TELAS SUGERIDAS

Algodón y mezclas de algodones, Chambray, Piqué, Lana y mezclas de lana ligeras, Sedas y telas sedosas, Crepé, Crepé de china, Satén. A,C también en Mallas dobles. Se necesita tela adicional para casar cuadros o rayas.

MERCERIA

Una cremallera invisible de 55cm.

*sans sens **avec sens ***avec ou sans sens

*sin pelusa **con pelusa ***con o sin pelusa

6145
SIZE / TAILLE / TALLA
U.S. 8-18
FR. 36-46
A
EURO. 34-44