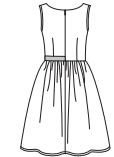


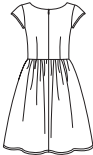
**10 PIECES/PIEZAS**  
Métrages et instructions  
de couture en Français à  
l'intérieur de l'enveloppe.



A D



B



C

**MISSES' SEVEN SIZES IN ONE**

Sizes	10	12	14	16	18	20	22	
European Size	36	38	40	42	44	46	48	
Bust	32½	34	36	38	40	42	44	In
Waist	25	26½	28	30	32	34	37	"
Hips	34½	36	38	40	42	44	46	"
Back-neck to waist	16	16¼	16½	16¾	17	17¼	17½	"
<b>A</b>	45***	2%	2¼	2¼	2%	2%	2½	Yd
	60***	1½	1½	1¾	1%	2	2	"
<b>B</b>	45***	2%	2½	2½	2%	2¾	2¾	Yd
	60***	1¾	1¾	2	2	2¼	2¼	"
<b>Lining</b>	45**	2%	2%	2%	2%	2%	2%	Yd
<b>A,B Interfacing-</b> ¾ yd. of 20" to 25" lightweight fusible, such as Pellon®								
<b>C</b>	45***	2¼	2%	2%	2%	2%	2%	Yd
	60***	1¾	1¾	1%	2	2%	2¼	"
<b>D Bodice</b>	45***	¾	¾	¾	1	1	1	Yd
	60***	¾	¾	¾	¾	¾	¾	"
<b>Contrast Skirt</b>								
	45***	1%	1%	1%	1%	1%	1%	Yd
	60***	1½	1½	1½	1½	1½	1½	"
<b>C,D Interfacing-</b> ½ yd. of 20" to 25" lightweight fusible, such as Pellon®								

**GARMENT MEASUREMENTS**

A,B,C,D Bust	35½	37	39	41	43	45	47	In
Finished back length from base of neck:								
A,B,C,D	39	39¼	39½	39¾	40	40¼	40½	"

**SUGGESTED FABRICS**

**A,C,D** in Charmeuse, Cotton Lawn, Crepe, Crepe De Chine, Dupion, Shantung, Linen Types, Pique, Sateen, Satin, Silky Types, Taffeta. **B** in Lace, Eyelet. Allow extra fabric for matching plaids or stripes.

**REQUIREMENTS**

Thread, one 22" invisible zipper. **A,D:** One pkg. of ½" wide single fold bias tape. **A:** 1½ yd. of ¾" wide ribbon.

\*without nap \*\*with nap \*\*\*with or without nap

**JEUNE FEMME: PATRON SEPT TAILLES**  
**SEÑORITAS: PATRON SIETE TALLAS**

Tailles / Tallas	10	12	14	16	18	20	22	
Taille Française	38	40	42	44	46	48	50	
Tallas europeas	36	38	40	42	44	46	48	
Poitrine / Busto	83	87	92	97	102	107	112	cm
Taille / Cintura	64	67	71	76	81	89	94	"
Hanches / Caderas	88	92	97	102	107	112	117	"
<b>Dos (encolure à Taille) / Espalda (escote a cintura)</b>								
	40.5	41.5	42	42.5	43	44	44	cm
<b>A</b>	115cm**	1.90	2.00	2.00	2.20	2.20	2.30	m
	150cm**	1.40	1.40	1.60	1.70	1.80	1.90	"
<b>B</b>	115cm**	2.10	2.20	2.30	2.40	2.50	2.50	m
	150cm**	1.60	1.60	1.80	1.80	2.00	2.10	"
<b>Doublure / Forro</b>								
	115cm*	1.90	1.90	2.00	2.00	2.10	2.20	m
<b>A,B Entoilage-</b> 0.30m de 51cm á 64cm léger thermocollant tels que Pellon®								
<b>A,B Entretela-</b> 0.30m de 51cm a 64cm ligera adhesiva como Pellon®								
<b>C</b>	115cm**	2.10	2.20	2.20	2.40	2.40	2.40	m
	150cm**	1.60	1.60	1.70	1.80	2.00	2.00	"
<b>D Corsage / D Corpiño</b>								
	115cm**	0.70	0.70	0.80	0.90	0.90	0.90	m
	150cm**	0.70	0.70	0.80	0.80	0.80	0.80	"
<b>Jupe Contrastante / Falda contrastante</b>								
	115cm**	1.40	1.40	1.40	1.40	1.50	1.50	m
	150cm**	1.40	1.40	1.40	1.40	1.40	1.50	"
<b>C,D Entoilage-</b> 0.50m de 51cm á 64cm léger thermocollant tels que Pellon®								
<b>C,D Entretela-</b> 0.50m de 51cm a64cm ligera adhesiva como Pellon®								

**TISSUS SUGGERES: A,C,D** en Charmeuse, Linon, Crêpe, Crêpe De Chine, Soie Dupion, Shantung, Mézclas de lin, Piqué, Satinette, Satin, Tissus soyeux, Taffetas. **B** en Dentelle, Broderie anglaise. Prévoyez davantage de tissu pour raccorder les écossois ou rayures.

**MERCERIE:** Fil, une glissière invisible de 55cm. **A,D:** Un paquet de ruban de biais de 1.3cm de large. **A:** 1.40m de ruban de 2.2cm de large.

**TELAS SUGERIDAS: A,C,D** en Charmeuse, Linón, Crepé, Crepé De China, Seda Dupion, Shantung, Mezclas de lino, Piqué, Algodón de Satén, Satèn, Telas sedosas, Tafetán. **B** en Encaje, Bordado inglés. Se necesita tela adicional para casar cuadros o rayas.

**MERCERIA:** Hilo, una cremallera invisible de 55cm. **A,D:** Un paquete de cinta de bias de 1.3cm de ancho. **A:** 1.40m de cinta de 2.2cm de ancho.

\*sans sens \*\*avec sens \*\*\*avec ou sans sens

\*sin pelusa \*\*con pelusa \*\*\*con o sin pelusa

**6262**  
SIZE / TAILLE / TALLA  
U.S. 10-22  
FR. 38-48  
EURO. 36-46