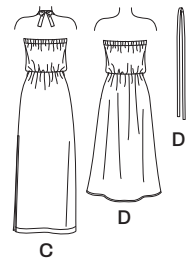
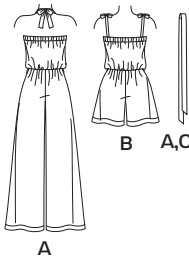


14 PIECES/PIEZAS

Medidas e instrucciones de costura en Español en el interior del patrón.



MISSES' SEVEN SIZES IN ONE

| | | | | | | | | |
|--------------------|-----|-----|-----|-----|-----|-----|-----|----|
| Sizes | 4 | 6 | 8 | 10 | 12 | 14 | 16 | |
| European Size | 30 | 32 | 34 | 36 | 38 | 40 | 42 | |
| Bust | 29½ | 30½ | 31½ | 32½ | 34 | 36 | 38 | In |
| Waist | 22 | 23 | 24 | 25 | 26½ | 28 | 30 | " |
| Hips | 31½ | 32½ | 33½ | 34½ | 36 | 38 | 40 | " |
| Back-neck to waist | 15¼ | 15½ | 15¾ | 16 | 16¼ | 16½ | 16¾ | " |

| | | | | | | | | |
|----------|----|----|----|----|----|----|----|----|
| A | | | | | | | | |
| 45*** | 2% | 2% | 2% | 2% | 3 | 3½ | 3¾ | Yd |
| 60*** | 2¼ | 2¼ | 2% | 2% | 2% | 2% | 2½ | " |

| | | | | | | | | |
|----------|----|----|----|----|----|----|----|----|
| B | | | | | | | | |
| 45*** | 1% | 1% | 1% | 1% | 1% | 1% | 1% | Yd |
| 60*** | 1% | 1¼ | 1¼ | 1¼ | 1¼ | 1¼ | 1¼ | " |

| | | | | | | | | |
|----------|----|----|----|----|----|----|----|----|
| C | | | | | | | | |
| 45*** | 3¼ | 3¼ | 3¼ | 3¼ | 3¼ | 3¼ | 3¼ | Yd |
| 60*** | 1¾ | 1¾ | 1¾ | 1¾ | 1¾ | 1¾ | 1¾ | " |

Contrast Tie Belt and Neck Strap- ½ yd. of 45" or 60***

| | | | | | | | | |
|----------|----|----|----|----|----|----|----|----|
| D | | | | | | | | |
| 45*** | 3¼ | 3¼ | 3% | 3% | 3½ | 3½ | 3% | Yd |
| 60*** | 2% | 2% | 2% | 2% | 2½ | 2½ | 2½ | " |

GARMENT MEASUREMENTS

| | | | | | | | | |
|--|-----|-----|-----|-----|-----|-----|-----|----|
| A,B,C,D Bust | 37½ | 38½ | 39½ | 40½ | 42 | 44 | 46 | In |
| Finished back length from base of neck (1" blousing not included): | | | | | | | | |
| A,C | 54½ | 55 | 55½ | 56 | 56½ | 57 | 57½ | In |
| B | 30½ | 31 | 31½ | 32 | 32½ | 33 | 33½ | " |
| D | 49¼ | 49½ | 49¾ | 50 | 50¼ | 50½ | 50¾ | " |

SUGGESTED FABRICS

Batiks, Cotton Lawn, Lightweight Cotton Types, Crepe De Chine, Faille, Gauze, Lightweight Linen Types, Silky Types, Voile, Interlock, Jacquard Knits, Jersey, Single Knits, Terry Knits. Allow extra fabric for matching plaids or stripes.

REQUIREMENTS

Thread, 1½ yd. of ¾" wide elastic, 1½ yd. of 1" wide elastic, one pkg. of ½" wide double fold bias tape. **B:** 6 yd. of ¾" to ¾" wide ribbon.

*without nap **with nap ***with or without nap

JEUNE FEMME: PATRON SEPT TAILLES

| | | | | | | | | |
|-------------------------|------|------|----|------|------|----|------|----|
| Tailles | 4 | 6 | 8 | 10 | 12 | 14 | 16 | |
| Tailles Françaises | 32 | 34 | 36 | 38 | 40 | 42 | 44 | |
| Poitrine | 75 | 78 | 80 | 83 | 87 | 92 | 97 | cm |
| Taille | 56 | 58 | 61 | 64 | 67 | 71 | 76 | " |
| Hanches | 80 | 83 | 85 | 88 | 92 | 97 | 102 | " |
| Dos (encolure à Taille) | 38.5 | 39.5 | 40 | 40.5 | 41.5 | 42 | 42.5 | cm |

| | | | | | | | | |
|----------|------|------|------|------|------|------|------|---|
| A | | | | | | | | |
| 115cm** | 2.60 | 2.60 | 2.60 | 2.70 | 2.80 | 3.10 | 3.20 | m |
| 150cm** | 2.10 | 2.10 | 2.20 | 2.20 | 2.20 | 2.20 | 2.20 | " |

| | | | | | | | | |
|----------|------|------|------|------|------|------|------|---|
| B | | | | | | | | |
| 115cm** | 1.30 | 1.30 | 1.30 | 1.40 | 1.40 | 1.70 | 1.80 | m |
| 150cm** | 1.10 | 1.10 | 1.10 | 1.10 | 1.10 | 1.10 | 1.10 | " |

| | | | | | | | | |
|----------|------|------|------|------|------|------|------|---|
| C | | | | | | | | |
| 115cm** | 2.90 | 2.90 | 2.90 | 2.90 | 3.00 | 3.00 | 3.00 | m |
| 150cm** | 1.60 | 1.60 | 1.60 | 1.60 | 1.60 | 1.60 | 1.60 | " |

Ceinture et bretelle d'encolure contrastantes-0.50m de 115cm ou 150cm**

| | | | | | | | | |
|----------|------|------|------|------|------|------|------|---|
| D | | | | | | | | |
| 115cm** | 3.00 | 3.00 | 3.00 | 3.10 | 3.10 | 3.20 | 3.30 | m |
| 150cm** | 2.20 | 2.20 | 2.20 | 2.20 | 2.20 | 2.20 | 2.30 | " |

MESURES DU VÊTEMENT

| | | | | | | | | |
|--|------|------|-------|------|------|-----|-----|----|
| A,B,C,D Poitrine | 95 | 98 | 100.5 | 103 | 107 | 112 | 117 | cm |
| Longueur finie du dos depuis la base du cou (blousant de 2.5cm non compris): | | | | | | | | |
| A,C | 130 | 140 | 141 | 143 | 144 | 145 | 146 | cm |
| B | 77.5 | 78.5 | 80 | 81.5 | 82.5 | 84 | 85 | " |
| D | 125 | 126 | 126 | 127 | 127 | 128 | 129 | " |

TISSUS SUGGERES

Batiks, Linon, Cottonnades légères, Crêpe De Chine, Faille, Gaze, Mélanges de lin léger, Tissus soyeux, Voile, Interlock, Jersey Jacquart, Jersey fin, Jersey simple, Éponge jersey. Prévoyez davantage de tissu pour raccorder les écossais ou rayures.

MERCERIE: Fil, 1.00m d'élastique de 1cm de large, 1.10m d'élastique de 2.5cm de large, un paquet de ruban de biais double de 1.3cm de large. **B:** 5.50m de ruban de 1cm à 1.5cm de large.

*sans sens **avec sens ***avec ou sans sens

*sin pelusa **con pelusa ***con o sin pelusa

6291
 SIZE / TAILLE / TALLA
 U.S. 4-16
 FR. 32-44
A EURO. 30-42