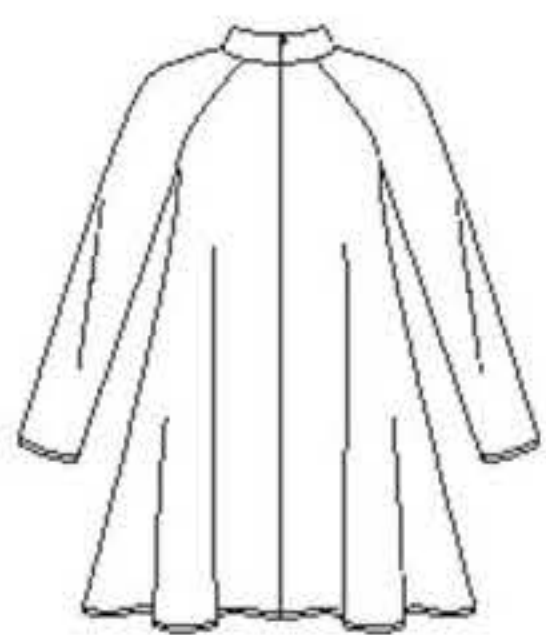
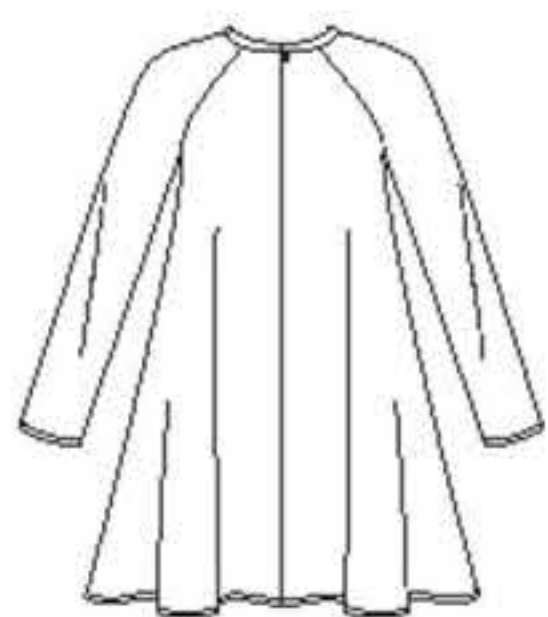


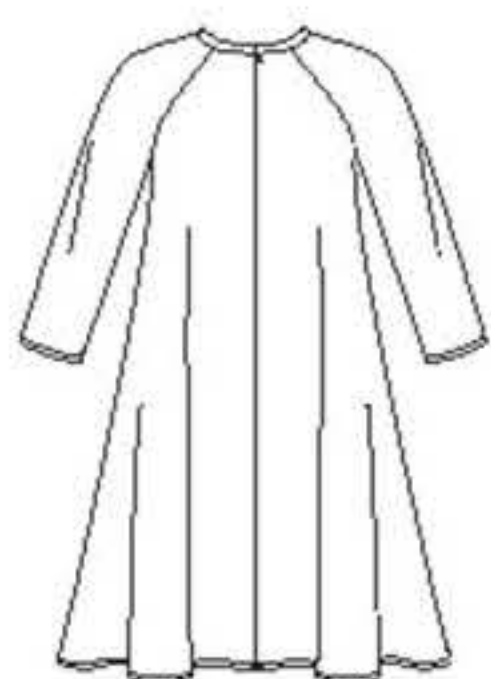
5 PIECES/PIEZAS
Métrages et instructions
de couture en Français à
l'intérieur de l'enveloppe.



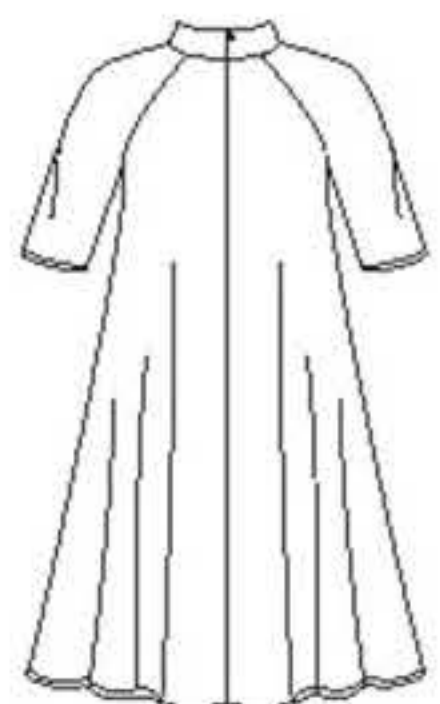
A



B



C



D

MISSES' SEVEN SIZES IN ONE

Sizes	8	10	12	14	16	18	20	
European Size	34	36	38	40	42	44	46	
Bust	31½	32½	34	36	38	40	42	In
Waist	24	25	26½	28	30	32	34	"
Hip	33½	34½	36	38	40	42	44	"
Back-neck to waist	15¾	16	16¼	16½	16¾	17	17¼	In

A

60***	1⅞	1⅞	1⅞	2	2⅞	2⅞	2¼	Yd
-------	----	----	----	---	----	----	----	----

B

60***	1⅝	1¾	1¾	1¾	1¾	1¾	1⅞	Yd
-------	----	----	----	----	----	----	----	----

Contrast Sleeves- 1 yd. of 60***

C

60***	2	2	2⅞	2⅞	2¼	2⅜	2½	Yd
-------	---	---	----	----	----	----	----	----

D

60***	2	2	2	2	2⅞	2¼	2⅜	Yd
-------	---	---	---	---	----	----	----	----

GARMENT MEASUREMENTS

A,B,C,D Bust	34½	35½	37	39	41	43	45	In
Finished back length from base of neck:								
A,B	32¾	33	33¼	33½	33¾	34	34¼	In
C,D	36¾	37	37¼	37½	37¾	38	38¼	"

SUGGESTED FABRICS

Sized for stretch knits only: Double Knit, Jacquard Knits, Jersey, Stretch Velvet.
See Pick-A-Knit® Rule. Allow extra fabric for matching plaids or stripes.

REQUIREMENTS

Thread, one 12" invisible zipper.
B,C: One hook and eye.

*without nap **with nap ***with or without nap

JEUNE FEMME: PATRON SEPT TAILLES
SEÑORITAS: PATRÓN SIETE TALLAS

Tailles / Tallas	8	10	12	14	16	18	20	
Tailles Françaises	36	38	40	42	44	46	48	
Tallas Europeas	34	36	38	40	42	44	46	
Poitrine / Busto	80	83	87	92	97	102	107	cm
Taille / Cintura	61	64	67	71	76	81	89	"
Hanches / Caderas	85	88	92	97	102	107	112	"
Dos (encolure à Taille) / Espalda (escote a cintura)								
	40	40.5	41.5	42	42.5	43	44	cm

A 150cm**

	1.70	1.70	1.70	1.80	1.90	2.00	2.10	m
--	------	------	------	------	------	------	------	---

B 150cm**

	1.50	1.50	1.60	1.60	1.60	1.60	1.70	m
--	------	------	------	------	------	------	------	---

Manches Contrastantes - 0.90m de 150cm**

Mangas Contrastantes - 0.90m de 150cm**

C 150cm**

	1.80	1.80	1.90	2.00	2.10	2.20	2.30	m
--	------	------	------	------	------	------	------	---

D 150cm**

	1.80	1.80	1.80	1.80	1.90	2.00	2.20	m
--	------	------	------	------	------	------	------	---

TISSUS SUGGÉRÉS

En Jerseys extensibles seulement: Jersey double, Jerseys Jacquards, Jersey fin, Velours extensibles. Voyez la Règle Pour Choisir un Jersey®. Prévoyez davantage de tissu pour raccorder les écossais ou les rayures.

MERCERIE

Fil, une glissière invisible de 30cm.

B,C: Une agrafe.

TELAS SUGERIDAS

En Mallas estirables solamente: Mallas dobles, Mallas Jacquards, Mallas finas, Terciopelo estirable. Vea la Regla para Escoger Mallas®. Se necesita tela adicional para casar cuadros o rayas.

MERCERÍA

Hilo, una cremallera invisible de 30cm.

B,C: Un corchete.

*sans sens **avec sens ***avec ou sans sens

*sin pelusa **con pelusa ***con o sin pelusa

6469
SIZE / TAILLE / TALLA
U.S. 8-20
FR. 36-48
A EURO. 34-46