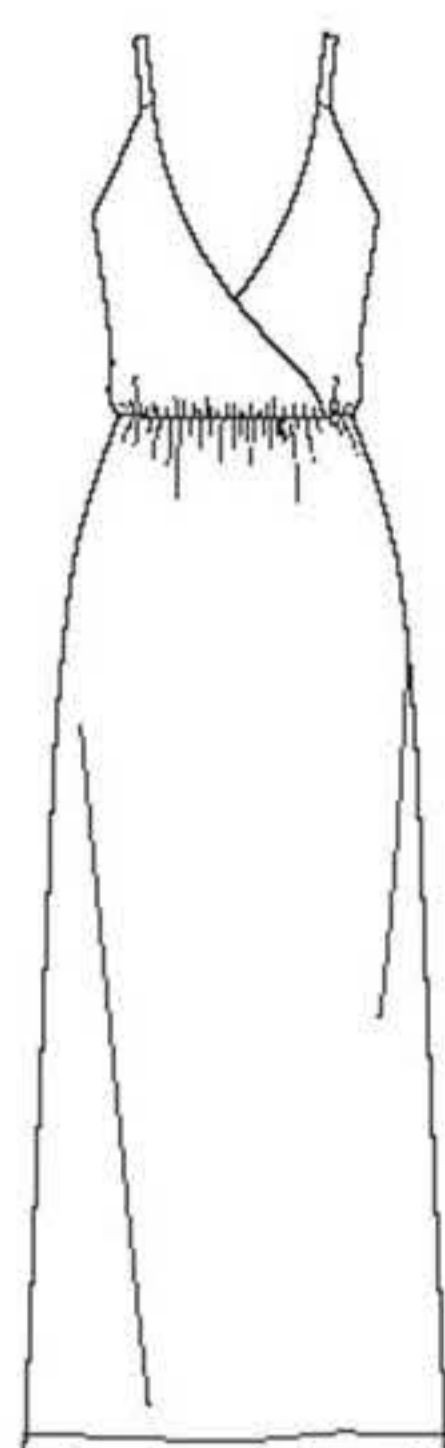


19 PIECES/PIEZAS

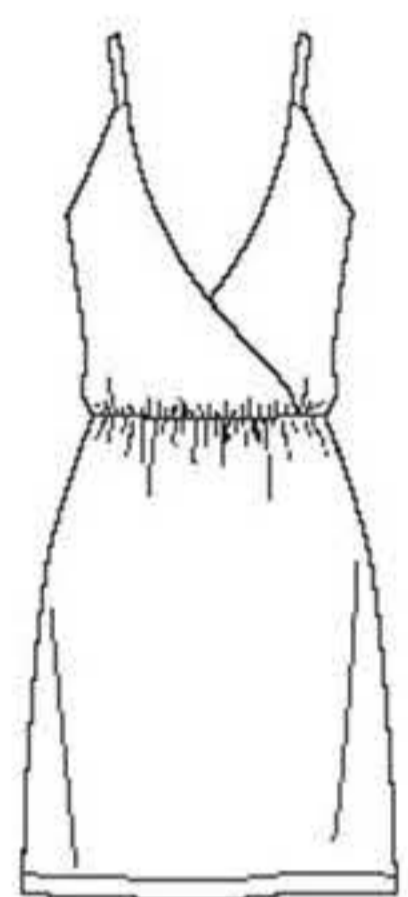
Métrages et instructions de couture en Français à l'intérieur de l'enveloppe.



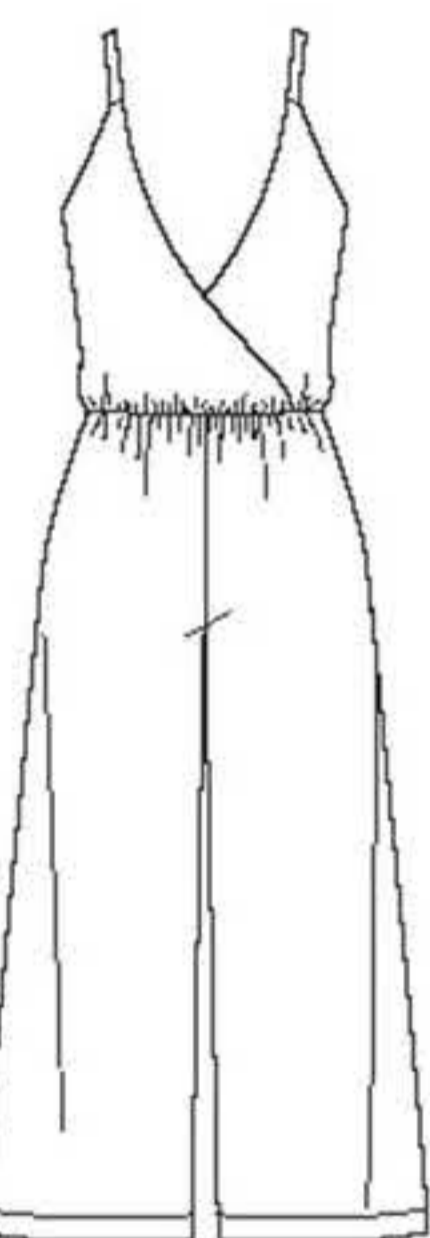
A



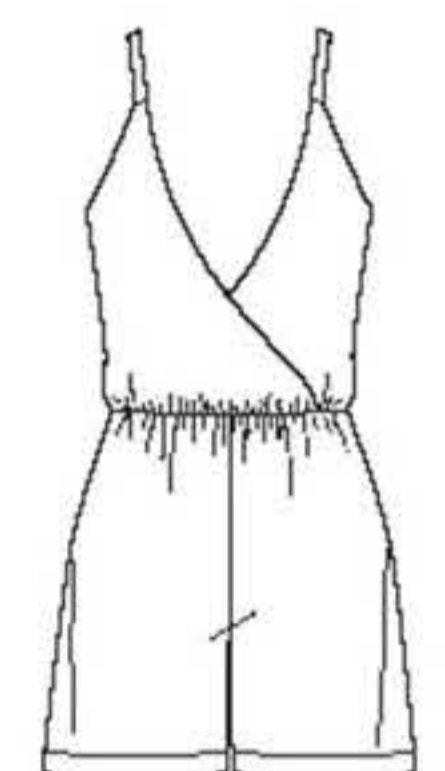
B



C



D



E

MISSES' SEVEN SIZES IN ONE

Sizes	6	8	10	12	14	16	18	
European Sizes	32	34	36	38	40	42	44	
Bust	30½	31½	32½	34	36	38	40	In
Waist	23	24	25	26½	28	30	32	"
Hips	32½	33½	34½	36	38	40	42	"
Back-neck to waist	15½	15¾	16	16¼	16½	16¾	17	"

A								
60***	½	½	½	⅝	⅝	⅝	⅝	Yd

B,C,D,E Interfacing- 1¾ yd. of 20" to 25" lightweight fusible, such as Pellon®

B								
45***	3⅜	3½	3½	3½	3⅝	3⅝	3¾	Yd
60***	2⅜	2⅜	2⅜	2½	2½	2½	2⅝	"

C								
45***	2⅝	2⅝	2⅝	2⅝	2⅝	2¾	2¾	Yd
60***	1¾	1¾	1¾	1⅞	1⅞	1⅞	2	"

D								
45***	3⅞	3¼	3¼	3⅜	3½	3½	3⅝	Yd
60***	2⅜	2¾	2¾	2¾	2¾	2¾	2⅞	"

E								
45***	2⅝	2⅝	2⅝	2¾	2¾	2⅞	2⅞	Yd
60***	2	2	2	2⅞	2¼	2⅜	2⅜	"

GARMENT MEASUREMENTS

A Bust	27½	28½	29½	31	33	35	37	In
B,C,D,E Bust	35	36	37	38½	40½	42½	44½	"
D,E Hip	37½	38½	39½	41	43	45	47	"
Finished back length from base of neck:								
B	55½	55¾	56	56¼	56½	56¾	57	In
C	33½	33¾	34	34¼	34½	34¾	35	"
D	47½	48	48½	49	49½	50	50½	"
E	29½	30	30½	31	31½	32	32½	"

SUGGESTED FABRICS

A sized for stretch knits only: Jersey, Lycra, Stretch Lace, Two Way Stretch. See Pick-A-Knit® Rule. **B,C,D,E** in Batiks, Challis, Chambray, Cotton Types, Linen Types, Lightweight Poplin, Lightweight Sateen, Seersucker. Allow extra fabric for matching plaids or stripes.

REQUIREMENTS

Thread. **A:** 1½ yd. of 1" wide elastic. **B,C,D,E:** 1 yd. of ¼" wide elastic.

*without nap **with nap ***with or without nap

JEUNE FEMME: PATRON SEPT TAILLES / SEÑORITAS: PATRON SEITE TALLAS

Tailles / Tallas	6	8	10	12	14	16	18	
Tailles Françaises	34	36	38	40	42	44	46	
Tallas Europeas	32	34	36	38	40	42	44	
Poitrine / Busto	78	80	83	87	92	97	102	cm
Taille / Cintura	58	61	64	67	71	76	81	"
Hanches / Caderas	83	85	88	92	97	102	107	"

Dos (encolure à Taille) / Espalda (escote a cintura)								
	39.5	40	40.5	41.5	42	42.5	43	cm

A	150cm**	0.50	0.50	0.50	0.50	0.50	0.50	0.50	m
----------	---------	------	------	------	------	------	------	------	---

B,C,D,E Entoilage- 1.30m de 51cm à 64cm léger thermocollant tels que Pellon®

B,C,D,E Entretela- 1.30m de 51cm a 64cm ligera adhesiva como Pellon®

B	115cm**	3.10	3.20	3.20	3.20	3.30	3.30	3.40	m
	150cm**	2.20	2.20	2.20	2.20	2.30	2.30	2.40	"

C	115cm**	2.40	2.40	2.40	2.40	2.40	2.50	2.50	m
	150cm**	1.60	1.60	1.60	1.70	1.70	1.80	1.90	"

D	115cm**	2.90	2.90	3.00	3.10	3.20	3.20	3.30	m
	150cm**	2.20	2.50	2.50	2.50	2.50	2.50	2.60	"

E	115cm**	2.40	2.40	2.40	2.50	2.50	2.60	2.70	m
	150cm**	1.80	1.90	1.90	2.00	2.00	2.10	2.20	"

TISSUS SUGGERES

Pour les jerseys extensibles seulement: Jersey fin, Lycra, Dentelle Extensible, Jersey extensible dans les deux sens. Voyez la Règle-Pour-Choisir-Un-Jersey®.

B,C,D,E en Batiks, Étamine, Chambray, Cottonnades, Mélanges de Lin, Popeline fine Légère, Satinette Légère, Seersucker. Prévoyez davantage de tissu pour raccorder les écosais ou rayures.

MERCERIE: Fil. **A:** 1.00m d'élastique de 2.5cm de large.

B,C,D,E: 1.00m d'élastique de 6mm de large.

TELAS SUGERIDAS

Para las mallas estirables solamente: Mallas finas, Lycra, Encaje Estirable, Mallas estirables en ambos sentidos. Vea la Regla-Para-Escoger-las-Mallas®.

B,C,D,E en Batiks, Chalí, Chambray, Mezclas de Algodones, Mezclas de Lino, Popelina fina Ligera, Algodón de Satén, Seersucker. Se necesita tela adicional para casar cuadros o rayas.

MERCERIA

Hilo. **A:** 1.00m de elástico de 2.5cm de ancho.

B,C,D,E: 1.00m de elástico de 6mm ancho.

*sans sens **avec sens ***avec ou sans sens

*sin pelusa **con pelusa ***sin o con pelusa

6493
 SIZE / TAILLE / TALLA
 U.S. 6-18
 FR. 34-46
 A EURO. 32-44