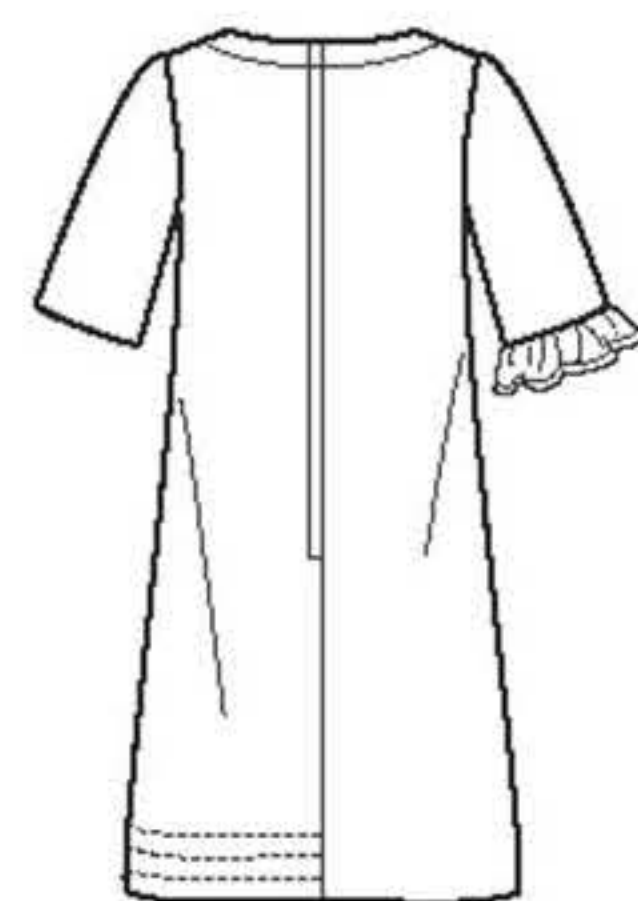
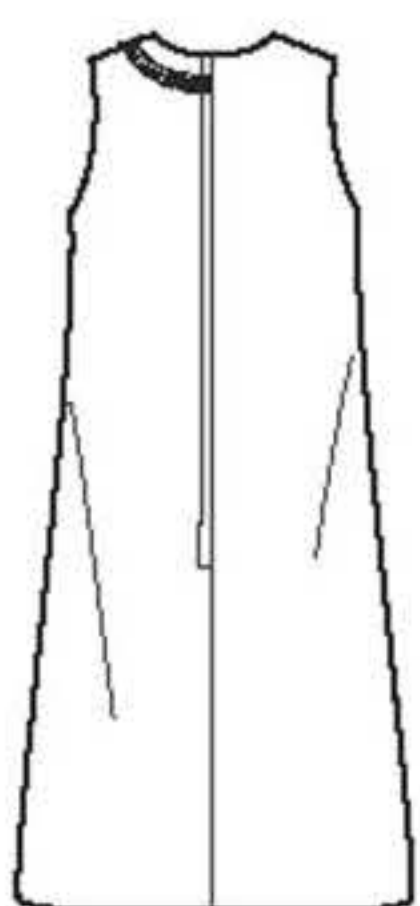


# 15 PIECES/PIEZAS

Métrages et instructions de couture en Français à l'intérieur de l'enveloppe.



A B



C D

## MISSSES' SEVEN SIZES IN ONE

Sizes		10	12	14	16	18	20	22	
European Size		36	38	40	42	44	46	48	
Bust		32½	34	36	38	40	42	44	In
Waist		25	26½	28	30	32	34	37	"
Hip		34½	36	38	40	42	44	46	"
Back-neck to waist		16	16¼	16½	16¾	17	17¼	17¾	"
<b>A</b>	45***	2⅛	2⅛	2⅛	2¼	2⅜	2⅜	2⅜	Yd
	60***	1⅝	1⅝	1⅝	1⅝	1⅝	1⅝	1⅝	"
<b>A,B Interfacing</b> ⅜ yd. of 20" to 25" lightweight fusible, such as Pellon®									
<b>B</b>	45***	2⅛	2⅛	2⅛	2¼	2⅜	2⅜	2⅜	Yd
	60***	1½	1½	1½	1½	1⅝	1⅝	1⅝	"
<b>C</b>	45***	1⅞	2	2	2	2⅛	2⅛	2⅛	Yd
	60***	1⅜	1⅜	1⅜	1⅜	1⅜	1½	1½	"
<b>C,D Interfacing</b> ⅝ yd. of 20" to 25" lightweight fusible, such as Pellon®									
<b>D</b>	45***	1½	2	2	2	2	2⅛	2¼	Yd
	60***	1⅜	1⅜	1⅜	1⅜	1⅜	1⅜	1⅜	"

## GARMENT MEASUREMENTS

A,B,C,D Bust	36	37½	39½	41½	43½	45½	47½	In
Finished back length from base of neck:								
A,B,C,D	34	34¼	34½	34¾	35	35¼	35½	In

## SUGGESTED FABRICS

Broadcloth, Brocade, Chiffon, Cotton Types, Double Georgette, Eyelet, Lace, Lightweight Denim, Linen Types, Madras, Pique, Poplin, Sateen, Satin, Silky Types. Allow extra fabric for match plaids or stripes.

**REQUIREMENTS:** Thread, one 20" zipper.

\*without nap \*\*with nap \*\*\*with or without nap

## JEUNE FEMME: PATRON SEPT TAILLES / SEÑORITAS: PATRON SIETE TALLAS

Tailles / Tallas	10	12	14	16	18	20	22		
Tailles Françaises	38	40	42	44	46	48	50		
Tallas Europeas	36	38	40	42	44	46	48		
Poitrine / Busto	83	87	92	97	102	107	112	cm	
Taille / Cintura	64	67	71	76	81	89	94	"	
Hanches /Caderas	88	92	97	102	107	112	117	"	
Dos (encolure à Taille) / Espalda (escote a cintura)									
		40.5	41.5	42	42.5	43	44	44	cm
<b>A</b>	115cm**	2.00	2.00	2.00	2.00	2.10	2.20	2.20	m
	150cm**	1.40	1.40	1.50	1.50	1.50	1.50	1.50	"
<b>A,B Entoilage-</b> 0.30m de 51 à 64cm léger thermocollant tels que Pellon®									
<b>A,B Entretela-</b> 0.30m de 51 a 64cm ligera adhesiva como Pellon®									
<b>B</b>	115cm**	1.90	1.90	2.00	2.00	2.10	2.10	2.20	m
	150cm**	1.40	1.40	1.40	1.40	1.40	1.50	1.50	"
<b>C</b>	115cm**	1.70	1.80	1.90	1.90	1.90	1.90	2.00	m
	150cm**	1.30	1.30	1.30	1.30	1.30	1.30	1.30	"
<b>C,D Entoilage-</b> 0.60m de 51 à 64cm léger thermocollant tels que Pellon®									
<b>C,D Entretela-</b> 0.60m de 51 a 64cm ligera adhesiva como Pellon®									
<b>D</b>	115cm**	1.30	1.80	1.80	1.80	1.90	1.90	2.10	m
	150cm**	1.20	1.20	1.20	1.20	1.20	1.20	1.30	"

## TISSUS SUGGERES

Popeline, Brocart, Mousseline, Cottonades, Crêpe Georgette Double, Broderie Anglaise, Dentelle, Denim Léger, Mélanges de Lin, Madras, Piqué, Popeline fine, Satinette, Satin, Tissus Soyeux. Prévoyez davantage de tissu pour raccorder les écossais ou rayures.

**MERCERIE:** Fil, une glissière de 51cm.

## TELAS SUGERIDAS

Popelina, Brocado, Muselina, Mezclas de Algodones, Crepé Georgette Doble, Bordado Inglés, Encaje, Dril Ligerero, Mezclas de Lino, Madras, Piqué, Popeline fine, Algodón de Satén, Satén, Telas Sedosas. Se necesita tela adicional para casar cuadros o rayas.

**MERCERIA:** Hilo, una cremallera de 51cm.

\*sans sens \*\*avec sens \*\*\*avec ou sans sens

\*sin pelusa \*\*con pelusa \*\*\*sin o con pelusa

**6500**  
 SIZE / TAILLE / TALLA  
 U.S. 10-22  
 FR. 38-50  
 EURO. 36-48  
**A**