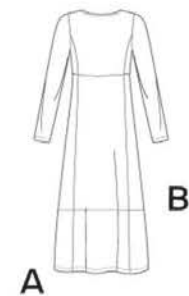


12 PIECES/PIEZAS



MISSES' SEVEN SIZES IN ONE

Sizes	10	12	14	16	18	20	22	
European Size	36	38	40	42	44	46	48	
Bust	32½	34	36	38	40	42	44	In
Waist	25	26½	28	30	32	34	37	"
Hip	34½	36	38	40	42	44	46	"
Back-neck to waist	16	16¼	16½	16¾	17	17¼	17¾	"

A	60***	2%	2%	2%	2%	2%	2%	2%	Yd
----------	-------	----	----	----	----	----	----	----	----

B	60***	2	2	2	2	2	2	2	Yd
----------	-------	---	---	---	---	---	---	---	----

C	60***	1½	1½	1½	1½	1½	1½	1½	Yd
----------	-------	----	----	----	----	----	----	----	----

Contrast- ⅞ yd. of 60***

D- ¾ yd. of 60***

GARMENT MEASUREMENTS

A,B,C Bust	36½	38	40	42	44	46	48	In
Finished back length from base of neck:								
A	48	48¼	48½	48¾	49	49¼	49½	In
B,C	36	36¼	36½	36¾	37	37¼	37½	"
A Width	50	51½	53½	55½	57½	59½	61½	"
B,C Width	45	46½	48½	50½	52½	54½	56½	"

SUGGESTED FABRICS

A,B,C,D sized for stretch knits only: Double Knit, Interlock, Ponte, Modal, Sweatshirt Fleece, Sweater Knit, Bamboo, ITY. See Pick-A-Knit® Rule. Allow extra fabric for matching plaids or stripes.

REQUIREMENTS

Thread. **A,B,C:** One pkg. of ¼" wide double fold bias tape, ¼ yd. of ⅜" wide ribbon for pockets.

*without nap **with nap ***with or without nap

JEUNE FEMME: PATRON SEPT TAILLES / SEÑORITAS: PATRON SIETE TALLAS

Tailles / Tallas	10	12	14	16	18	20	22	
Tailles Françaises	38	40	42	44	46	48	50	
Tallas Europeas	36	38	40	42	44	46	48	
Poitrine / Busto	83	87	92	97	102	107	112	cm
Taille / Cintura	64	67	71	76	81	89	94	"
Hanches /Caderas	88	92	97	102	107	112	117	"
Dos (encolure à Taille) / Espalda (escote a cintura)	40.5	41.5	42	42.5	43	44	44	cm

A	150cm**	2.40	2.40	2.40	2.40	2.40	2.40	2.40	m
----------	---------	------	------	------	------	------	------	------	---

B	150cm**	1.80	1.80	1.80	1.80	1.80	1.90	1.90	m
----------	---------	------	------	------	------	------	------	------	---

C	150cm**	1.40	1.40	1.40	1.40	1.40	1.40	1.40	m
----------	---------	------	------	------	------	------	------	------	---

Contrastante- 0.80m de 150cm**

D- 0.60m de 150cm**

TISSUS SUGGÉRÉS

A,B,C,D pour les jerseys extensibles seulement: Jersey Double, Jersey Interlock, Ponte, Tricot Modal, Molleton pour Sweatshirt, Jerseys pour Sweater, Tricot de Bambou, Jersey ITY. Voyez la Règle-Pour-Choisir-Un-Jersey®. Prévoyez davantage de tissu pour raccorder les écosseis ou rayures.

MERCERIE

Fil. **A,B,C:** Un paquet de ruban de biais double de 6mm de large, 0.20m de ruban de 1cm de large pour poches.

TELAS SUGERIDAS

A,B,C,D para las mallas estirables solamente: Interlock, Mallas Interlock, Ponte, Mallas Modal, Muletón para Sudaderas, Mallas para Sweater, Mallas en Bambú, Mallas ITY. Vea la Regla-Para-Escoger-las-Mallas®. Se necesita tela extra para casar cuadros o rayas.

MERCERIA

Hilo. **A,B,C:** Un paquete de cinta de bias doble de 6mm de ancho, 0.20m de cinta de 1cm de ancho para bolsillos.

*sans sens **avec sens ***avec ou sans sens

*sin pelusa **con pelusa ***sin o con pelusa

N6632
 SIZE / TAILLE / TALLA
 U.S. 10-22
A FR. 38-50
 EURO. 36-48