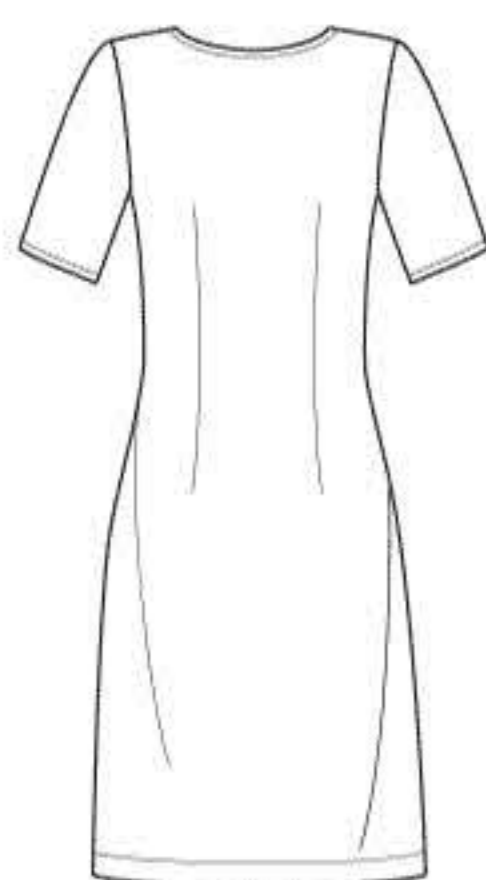
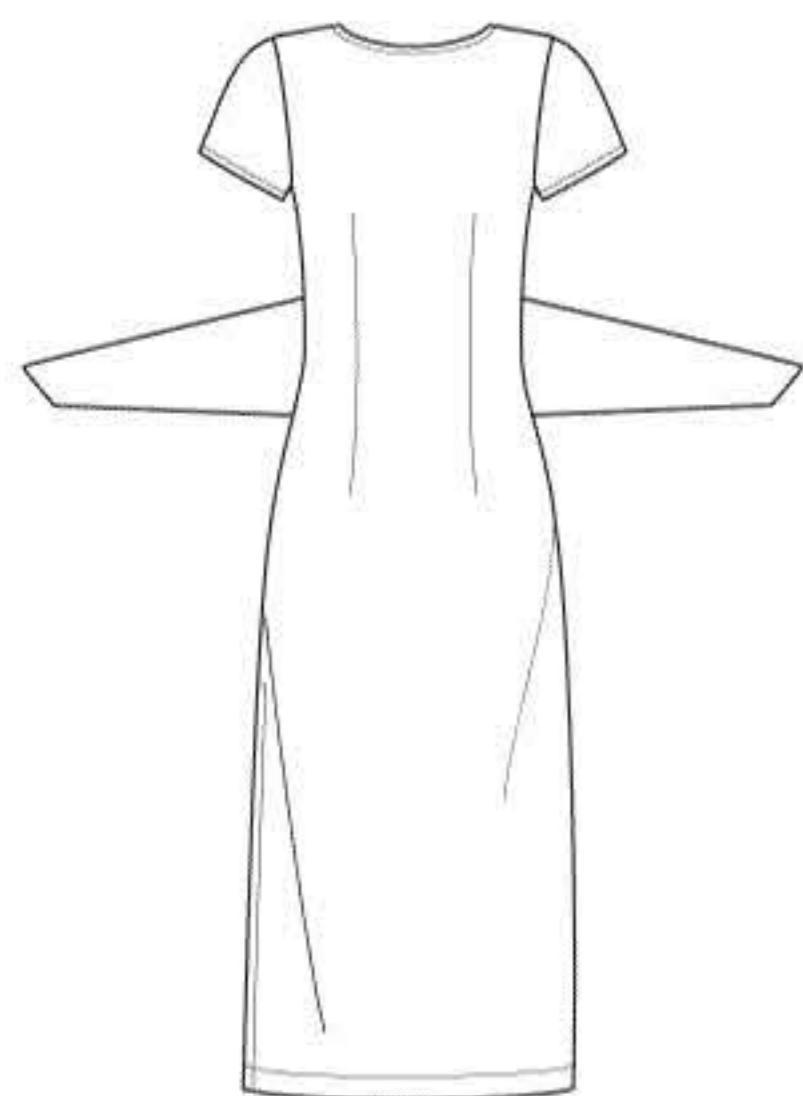


# N6650

4 PIECES/PIEZAS



A



B

## MISSSES' SEVEN SIZES IN ONE

Sizes	10	12	14	16	18	20	22	
European Size	36	38	40	42	44	46	48	
Bust	32½	34	36	38	40	42	44	In
Waist	25	26½	28	30	32	34	37	"
Hip	34½	36	38	40	42	44	46	"
Back-neck to waist	16	16¼	16½	16¾	17	17¼	17¾	"

### A

60***	1¾	1¾	2	2	2	2	2	Yd
-------	----	----	---	---	---	---	---	----

### B

60***	2	2½	2½	2½	2½	2½	2½	Yd
-------	---	----	----	----	----	----	----	----

## GARMENT MEASUREMENTS

A,B Bust	33½	35	37	39	41	43	45	In
----------	-----	----	----	----	----	----	----	----

### Finished back length from base of neck:

A	37	37¼	37½	37¾	38	38¼	38½	In
---	----	-----	-----	-----	----	-----	-----	----

B	48	48¼	48½	48¾	49	49¼	49½	"
---	----	-----	-----	-----	----	-----	-----	---

A,B Width	36	37½	39½	41½	43½	45½	47½	"
-----------	----	-----	-----	-----	-----	-----	-----	---

## SUGGESTED FABRICS

Sized for stretch knits only: Interlock, Jacquard, Jersey, ITY, Rib Knit, Single Knit. See Pick-A-Knit® Rule. Allow extra fabric for matching plaids or stripes.

## REQUIREMENTS

Thread, one pkg. of ¾" wide clear elastic (opt.).

\*without nap \*\*with nap \*\*\*with or without nap

## JEUNE FEMME: PATRON SEPT TAILLES / SEÑORITAS: PATRON SIETE TALLAS

Tailles / Tallas	10	12	14	16	18	20	22	
Tailles Françaises	38	40	42	44	46	48	50	
Tallas Europeas	36	38	40	42	44	46	48	
Poitrine / Busto	83	87	92	97	102	107	112	cm
Taille / Cintura	64	67	71	76	81	89	94	"
Hanches / Caderas	88	92	97	102	107	112	117	"
Dos (encolure à Taille) / Espalda (escote a cintura)								
	40.5	41.5	42	42.5	43	44	44	cm

### A

150cm**	1.80	1.80	1.80	1.80	1.80	1.80	1.80	m
---------	------	------	------	------	------	------	------	---

### B

150cm**	1.90	1.90	1.90	1.90	1.90	1.90	2.00	m
---------	------	------	------	------	------	------	------	---

## TISSUS SUGGERES

Pour les jerseys extensibles seulement: Interlock, Jacquard, Jersey, Jersey ITY, Jersey à Côtes, Jersey Simple. Voyez la Règle-Pour-Choisir-Un-Jersey®. Prévoyez davantage de tissu pour raccorder les écossais ou rayures.

## MERCERIE

Fil, un paquet d'élastique transparent de 1cm de large (opt.).

## TELAS SUGERIDAS

Para las mallas estirables solamente: Interlock, Jacquard, Mallas, Mallas ITY, Mallas Acanaladas, Mallas Sencillas. Ve la Regla-Para-Escoger-las-Mallas®. Se necesita tela adicional para casar cuadros o rayas.

## MERCERIA

Hilo, un paquete de elástico transparente de 1cm de ancho (opcional).

\*sans sens \*\*avec sens \*\*\*avec ou sans sens

\*sin pelusa \*\*con pelusa \*\*\*sin o con pelusa

**N6650**

SIZE / TAILLE / TALLA

U.S. 10-22

FR. 38-50

EURO. 36-48

**A**