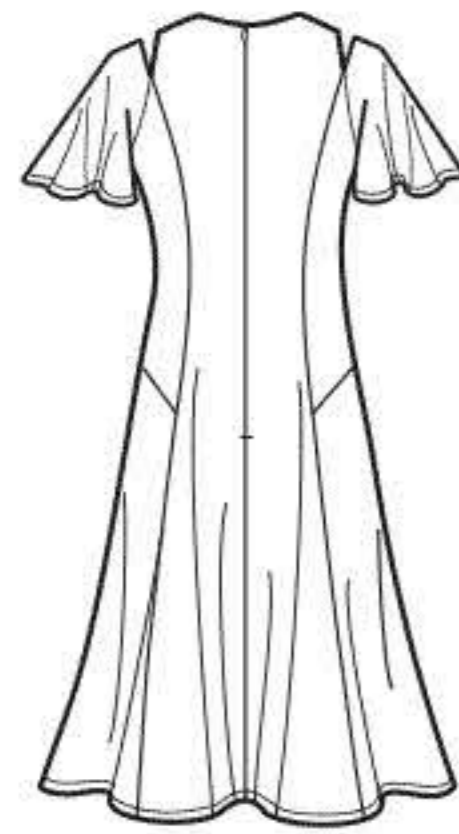
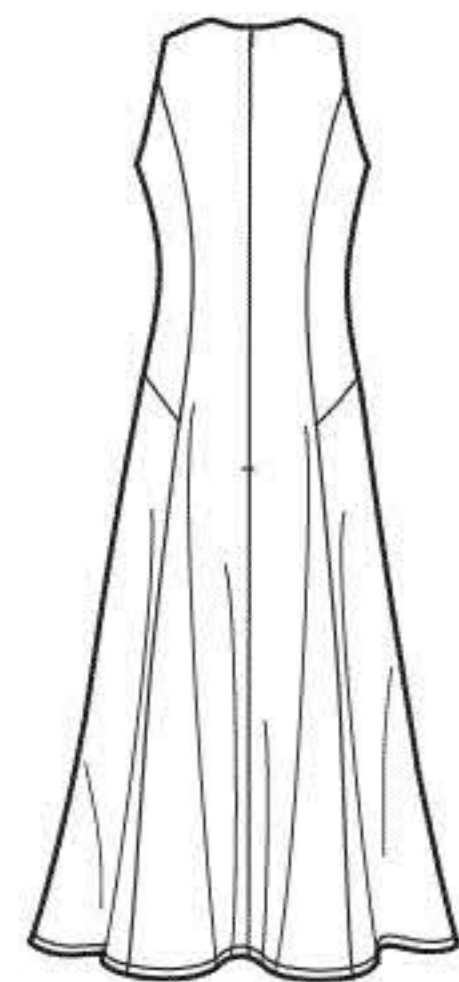


# N6652

9 PIECES/PIEZAS



A



B

**N6652**  
 SIZE / TAILLE / TALLA  
 U.S. 10-22  
 FR. 38-50  
 EURO. 36-48  
**A**

## MISSES' SEVEN SIZES IN ONE

Sizes	10	12	14	16	18	20	22	
European Size	36	38	40	42	44	46	48	
Bust	32½	34	36	38	40	42	44	In
Waist	25	26½	28	30	32	34	37	"
Hip	34½	36	38	40	42	44	46	"
Back-neck to waist	16	16¼	16½	16¾	17	17¼	17¾	"

### A

45"***	3⅞	3⅞	3⅞	3¾	3¾	3¾	3¾	Yd
60"***	2¾	2¾	2¾	2¾	2½	2½	2½	"

**A,B Interfacing-** ⅞ yd. of 20" to 25" lightweight fusible such as Pellon®

### B

45"***	3⅝	3⅝	3⅝	3¾	3¾	3¾	3¾	Yd
60"***	2⅝	2⅝	2¾	2¾	2⅞	2⅞	2⅞	"

## GARMENT MEASUREMENTS

<b>A,B Bust</b>	35½	37	39	41	43	45	47	In
-----------------	-----	----	----	----	----	----	----	----

**Finish back length from base of neck:**

<b>A</b>	41	41¼	41½	41¾	42	42¼	42½	In
<b>B</b>	48	48¼	48½	48¾	49	49¼	49½	"

<b>A Width</b>	78½	80	82	84	86	88	90	"
----------------	-----	----	----	----	----	----	----	---

<b>B Width</b>	95½	97	99	101	103	105	107	"
----------------	-----	----	----	-----	-----	-----	-----	---

## SUGGESTED FABRICS

Silky Types such as: Crepe, Crepe de Chine, Double Georgette, Rayon. Also in Soft Cotton Types, Lightweight Poplin, Linen Types, Sateen. Allow extra fabric for matching plaids or stripes.

## REQUIREMENTS

Thread, one 22" invisible zipper.

\*without nap \*\*with nap \*\*\*with or without nap

## JEUNE FEMME: PATRON SEPT TAILLES / SEÑORITAS: PATRON SIETE TALLAS

Tailles / Tallas	10	12	14	16	18	20	22	
Tailles Françaises	38	40	42	44	46	48	50	
Tallas Europeas	36	38	40	42	44	46	48	
Poitrine / Busto	83	87	92	97	102	107	112	cm
Taille / Cintura	64	67	71	76	81	89	94	"
Hanches / Caderas	88	92	97	102	107	112	117	"
Dos (encolure à Taille) / Espalda (escote a cintura)	40.5	41.5	42	42.5	43	44	44	cm

### A

115cm**	2.80	2.80	2.90	3.00	3.00	3.10	3.10	m
150cm**	2.20	2.20	2.20	2.20	2.20	2.30	2.30	"

**A,B Entoilage-** 0.80m de 51cm à 64cm, léger, thermocollant tel que Pellon®

**A,B Entretela-** 0.80m de 51cm a 64cm, ligera, adhesiva como Pellon®

### B

115cm**	3.30	3.30	3.40	3.40	3.40	3.40	3.50	m
150cm**	2.40	2.40	2.50	2.50	2.60	2.60	2.60	"

## TISSUS SUGGERES

Tissus Soyeux tels que: Crêpe, Crêpe de Chine, Crêpe Georgette Double, Rayon. Aussi en Cotonnades Souples, Popeline Légère, Toile de Lin, Satinette. Prévoyez davantage de tissu pour raccorder les écossais ou rayures.

## MERCERIE

Fil, une glissière invisible de 55cm.

## TELAS SUGERIDAS

Telas Sedosas como: Crepé, Crepé de China, Crepé Georgette Doble, Rayón. También en Mezclas de Algodón Suaves, Popelina Ligera, Tela de Lino, Satén de Algodón. Se necesita tela extra para casar cuadros o rayas.

## MERCERIA

Hilo, una cremallera invisible de 55cm.

\*sans sens \*\*avec sens \*\*\*avec ou sans sens

\*sin pelusa \*\*con pelusa \*\*\*sin o con pelusa