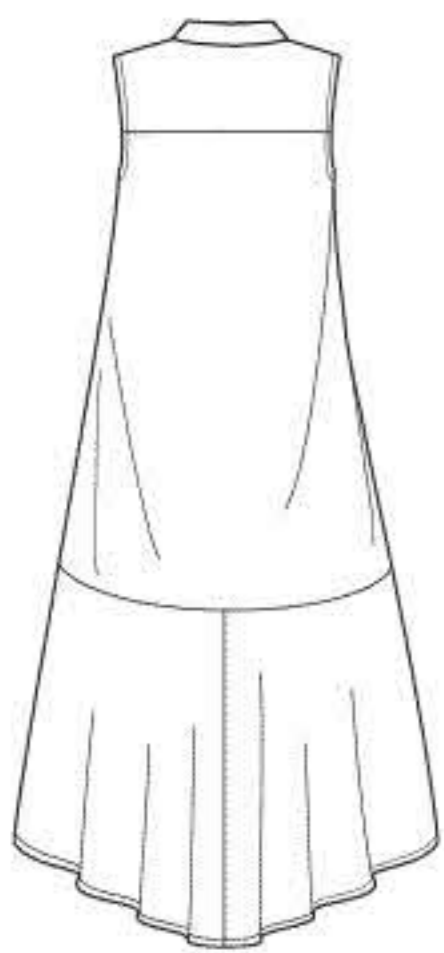


# N6654

10 PIECES/PIEZAS



A



B

**N6654**  
 SIZE / TAILLE / TALLA  
 U.S. 10-22  
 FR. 38-50  
 EURO. 36-48  
**A**

## MISSES' SEVEN SIZES IN ONE

Sizes	10	12	14	16	18	20	22	
European Size	36	38	40	42	44	46	48	
Bust	32½	34	36	38	40	42	44	In
Waist	25	26½	28	30	32	34	37	"
Hip	34½	36	38	40	42	44	46	"
Back-neck to waist	16	16¼	16½	16¾	17	17¼	17¾	"

### A

45***	2¾	2¾	3	3	3	3½	3¾	Yd
60***	2¼	2¼	2¼	2¾	2¾	2¾	2½	"

**Interfacing-** ¾ yd. of 20" to 25" lightweight fusible, such as Pellon®

### B

45***	3¼	3¼	3¼	3¼	3¾	3½	3¾	Yd
60***	2½	2½	2½	2½	2½	2½	2¾	"

**Interfacing-** ¾ yd. of 20" to 25" lightweight fusible, such as Pellon®

## GARMENT MEASUREMENTS

A,B Bust	39	40½	42½	44½	46½	48½	50½	In
Finished back length from base of neck:								
A	40	40¼	40½	40¾	41	41¼	41½	In
B	46½	46¾	47	47¼	47½	47¾	48	"

## SUGGESTED FABRICS

Chambray, Chintz, Cotton Types, Crepe de Chine, Gingham, Lightweight Denim, Linen Blends, Poplin, Shirtings. Allow extra fabric for matching plaids or stripes.

## REQUIREMENTS

Thread, nine ⅝" buttons. **B:** One pkg. of ½" wide single fold bias tape.

\*without nap \*\*with nap \*\*\*with or without nap

## JEUNE FEMME: PATRON SEPT TAILLES / SEÑORITAS: PATRON SIETE TALLAS

Tailles / Tallas	10	12	14	16	18	20	22	
Tailles Françaises	38	40	42	44	46	48	50	
Tallas Europeas	36	38	40	42	44	46	48	
Poitrine / Busto	83	87	92	97	102	107	112	cm
Taille / Cintura	64	67	71	76	81	89	94	"
Hanches / Caderas	88	92	97	102	107	112	117	"
Dos (encolure à Taille) / Espalda (escote a cintura)	40.5	41.5	42	42.5	43	44	44	cm

### A

115cm**	2.60	2.70	2.70	2.70	2.70	2.80	3.00	m
150cm**	2.10	2.10	2.10	2.10	2.10	2.20	2.20	"

**Entoilage-** 0.70m de 51cm à 64cm, léger, thermocollant tel que Pellon®

**Entretela-** 0.70m de 51cm a 64cm, ligera, adhesiva como Pellon®

### B

115cm**	2.90	2.90	3.00	3.00	3.00	3.20	3.40	m
150cm**	2.30	2.30	2.30	2.40	2.40	2.40	2.50	"

**Entoilage-** 0.70m de 51cm à 64cm, léger, thermocollant tel que Pellon®

**Entretela-** 0.70m de 51cm a 64cm, ligera, adhesiva como Pellon®

## TISSUS SUGGÉRÉS

Chambray, Chintz, Cotonnades, Crêpe de Chine, Vichy, Denim Léger, Mélanges de Lin, Popeline fine, Shirting. Prévoyez davantage de tissu pour raccorder les écossais ou rayures.

## MERCERIE

Fil, neuf boutons de 1.5cm. **B:** Un paquet de ruban simple de biais de 1.3cm de large.

## TISSUS SUGGÉRÉS

Chambray, Chintz, Mezclas de Algodones, Crepé de China, Guingán, Dril Ligero, Mezclas de Lino, Popelina fina, Shirting. Se necesita tela extra para casar cuadros o rayas.

## MERCERIA

Hilo, nueve botones de 1.5cm. **B:** Un paquete de cinta de bias sencillo de 1.3cm de ancho.

\*sans sens \*\*avec sens \*\*\*avec ou sans sens

\*sin pelusa \*\*con pelusa \*\*\*sin o con pelusa