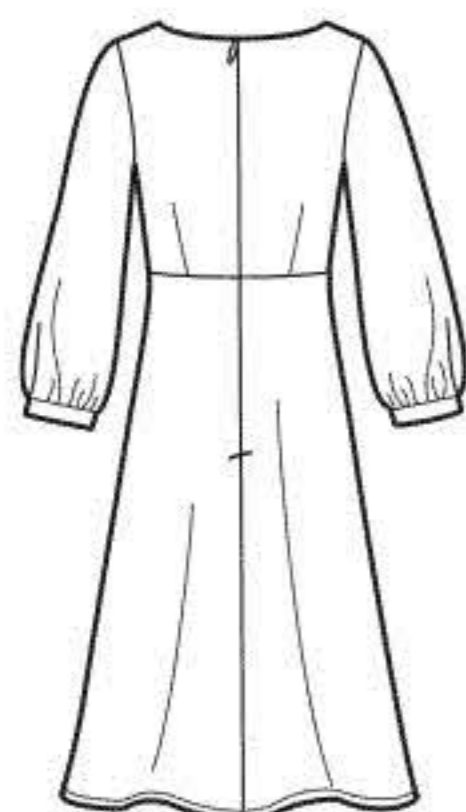
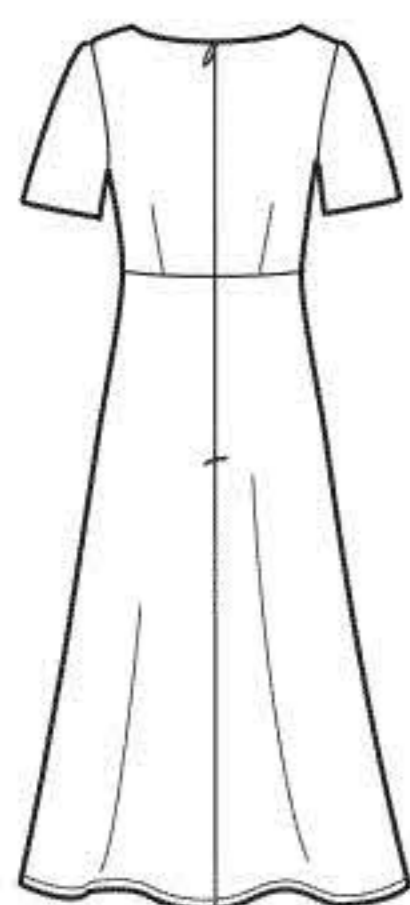


N6655

10 PIECES/PIEZAS



A



B

N6655
 SIZE / TAILLE / TALLA
 U.S. 6-18
 FR. 34-46
A
 EURO. 32-446

MISSES' SEVEN SIZES IN ONE

Sizes	6	8	10	12	14	16	18	
European Sizes	32	34	36	38	40	42	44	
Bust	30½	31½	32½	34	36	38	40	In
Waist	23	24	25	26½	28	30	32	"
Hips	32½	33½	34½	36	38	40	42	"
Back-neck to waist	15½	15¾	16	16¼	16½	16¾	17	"

A,B Lining

45"*	⅝	⅝	⅝	⅝	⅝	¾	⅞	"
------	---	---	---	---	---	---	---	---

Interfacing- ⅝ yd. of 20" to 25" lightweight fusible, such as Pellon®

A

45"***	2¾	2¾	2⅞	3	3	3⅛	3¼	Yd
60"***	2¼	2¼	2¼	2¼	2¼	2¼	2⅜	"

B

45"***	2⅞	2⅞	2½	2⅝	2¾	2⅞	3	Yd
60"***	2	2	2	2	2	2	2¼	"

GARMENT MEASUREMENTS

A,B Bust	33½	34½	35½	37	39	41	43	In
Finished back length from base of neck:								
A	38½	38¾	39	39¼	39½	39¾	40	In
B	44½	44¾	45	45¼	45½	45¾	46	"

SUGGESTED FABRICS

Silky Types such as: Rayon, Crepes, Double Georgette, Crepe Back Satin, Soft Lightweight Linens and Linen Blends. Allow extra fabric for matching plaids or stripes.

REQUIREMENTS

Thread, one 22" invisible zipper.

*without nap **with nap ***with or without nap

JEUNE FEMME: PATRON SEPT TAILLES / SEÑORITAS: PATRON SIETE TALLAS

Tailles / Tallas	6	8	10	12	14	16	18	
Tailles Française	34	36	38	40	42	44	46	
Tallas Europeas	32	34	36	38	40	42	44	
Poitrine / Busto	78	80	83	87	92	97	102	cm
Taille / Cintura	58	61	64	67	71	76	81	"
Hanches / Caderas	83	85	88	92	97	102	107	"
Dos (encolure à Taille) / Espalda (escote a cintura)	39.5	40	40.5	41.5	42	42.5	43	cm

A,B Doublure/ A,B Forro

115cm*	0.50	0.60	0.60	0.60	0.60	0.70	0.80	m
--------	------	------	------	------	------	------	------	---

Entoilage- 0.50m de 51cm à 64cm, léger, thermocollant tel que Pellon®

Entretela- 0.50m de 51cm a 64cm, ligera, adhesiva como Pellon®

A

115cm**	2.50	2.60	2.60	2.70	2.80	2.80	3.00	m
150cm**	2.10	2.10	2.10	2.10	2.10	2.10	2.20	"

B

115cm**	2.20	2.20	2.30	2.40	2.50	2.70	2.80	m
150cm**	1.80	1.80	1.80	1.90	1.90	1.80	2.00	"

TISSUS SUGGERES

Tissus Soyeux tels que: Rayonne, Crêpe, Crêpe Georgette Double, Crêpe de Satin, Mélanges de Lin Souples et Légers et Mélanges de Lin. Prévoyez davantage de tissu pour raccorder les écossais ou rayures.

MERCERIE

Fil, une glissière invisible de 55cm.

TELAS SUGERIDAS

Telas Sedosas como: Rayón, Crepé, Crepé Georgette Doble, Crepé de Satén, Mezclas de Lino Suaves y Ligeras y Mezclas de Lino. Se necesita tela adicional para casar cuadros o rayas.

MERCERIA

Hilo, una cremallera invisible de 55cm.

*sans sens **avec sens ***avec ou sans sens

*sin pelusa **con pelusa ***sin o con pelusa