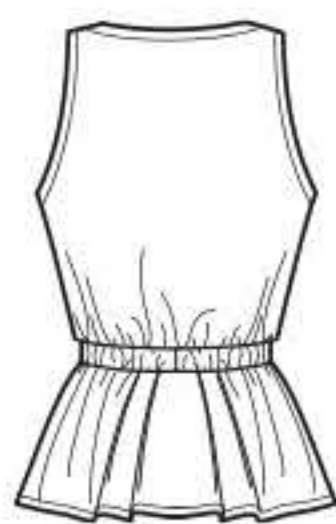
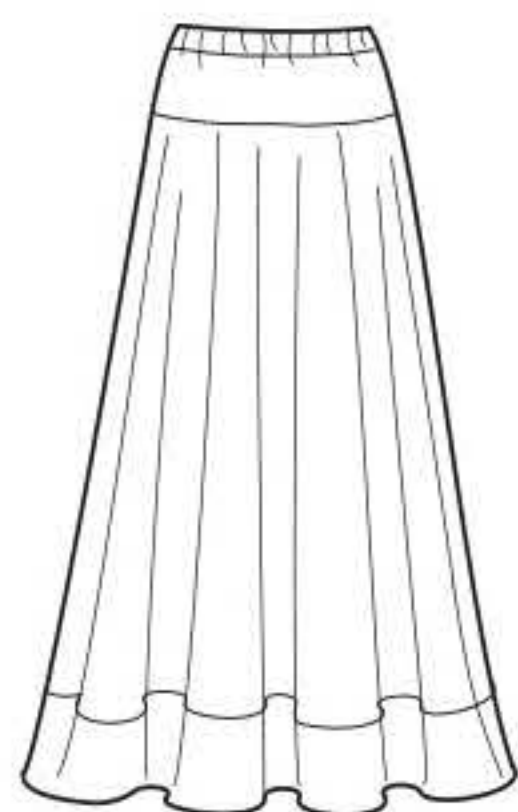


# N6668

12 PIECES/PIEZAS



A



B

## MISSES' SEVEN SIZES IN ONE

Sizes	8	10	12	14	16	18	20	
European Size	34	36	38	40	42	44	46	
Bust	31½	32½	34	36	38	40	42	In
Waist	24	25	26½	28	30	32	34	"
Hip	33½	34½	36	38	40	42	44	"
Back-neck to waist	15¾	16	16¼	16½	16¾	17	17¼	"

<b>A</b>								
45"***	1⅝	1⅝	1⅝	1¾	1¾	1¾	1⅞	Yd
60"***	1¼	1¼	1¼	1¼	1¼	1⅜	1⅜	"

**Interfacing-** ⅝ yd. of 20" to 25" lightweight fusible

<b>B</b>								
45"***	3⅞	3⅞	3⅞	3½	3½	3⅝	3¾	Yd
60"***	3¼	3⅜	3⅜	3⅜	3⅜	3½	3½	"

## FINISHED GARMENT MEASUREMENTS (Includes Design and Wearing EASE)

<b>A Bust</b>	34½	35½	37	39	41	43	45	In
<b>Finished back length from base of neck:</b>								
<b>A</b>	22¾	23	23¼	23½	23¾	24	24¼	In
<b>B Length</b>	35	35	35	35	35	35	35	"
<b>B Width</b>	119	120	121½	123	125	127	129	"

## SUGGESTED FABRICS

Cottons: Poplin, Sateen, Chambray; Silky Types: Challis, Crepe de Chine, Linens, Soft Taffeta. Allow extra fabric for matching plaids or stripes.

## REQUIREMENTS

Thread, 1⅞ yds. of 1" wide elastic.

## JEUNE FEMME: PATRON SEPT TAILLES / SEÑORITAS: PATRON SIETE TALLAS

Tailles / Tallas	8	10	12	14	16	18	20	
Tailles Françaises	36	38	40	42	44	46	48	
Tallas Europeas	34	36	38	40	42	44	46	
Poitrine / Busto	80	83	87	92	97	102	107	cm
Taille / Cintura	61	64	67	71	76	81	89	"
Hanches /Caderas	85	88	92	97	102	107	112	"
Dos (encolure à Taille) / Espalda (escote a cintura)								
	40	40.5	41.5	42	42.5	43	44	cm

<b>A</b>								
115cm**	1.50	1.50	1.50	1.60	1.60	1.60	1.70	m
150cm**	1.20	1.20	1.20	1.20	1.20	1.20	1.20	"

**Entoilage-** 0.50m de 51cm à 64cm, léger, thermocollant

**Entretela-** 0.50m de 51cm a 64cm, ligera, adhesiva

<b>B</b>								
115cm**	3.00	3.00	3.10	3.20	3.20	3.30	3.40	m
150cm**	3.00	3.00	3.10	3.10	3.10	3.20	3.20	"

## TISSUS SUGGERES

Cotons: Popeline, Satinette, Chambray; Tissus Soyeux: Étamine, Crêpe de Chine, Lin, Taffeta doux. Prévoyez davantage de tissu pour raccorder les écossais ou rayures.

## MERCERIE

Fil, 1.10m d'élastique de 2.5cm de large.

## TELAS SUGERIDAS

Algodones: Popelina, Satén, Chambray; Telas Sedosas: Chalí, Crepé de China, Lino, Tafetán suave. Se necesita tela extra para casar cuadros o rayas.

## MERCERIA

Hilo, 1.10m de elástico de 2.5cm de ancho.

\*without nap \*\*with nap \*\*\*with or without nap

\*sans sens \*\*avec sens \*\*\*avec ou sans sens

\*sin pelusa \*\*con pelusa \*\*\*sin o con pelusa

**N6668**  
 SIZE / TAILLE / TALLA  
 U.S. 8-20  
 FR. 36-48  
**A** EURO. 34-46