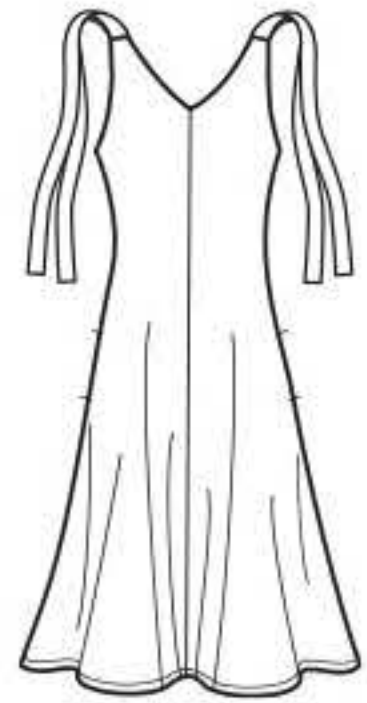
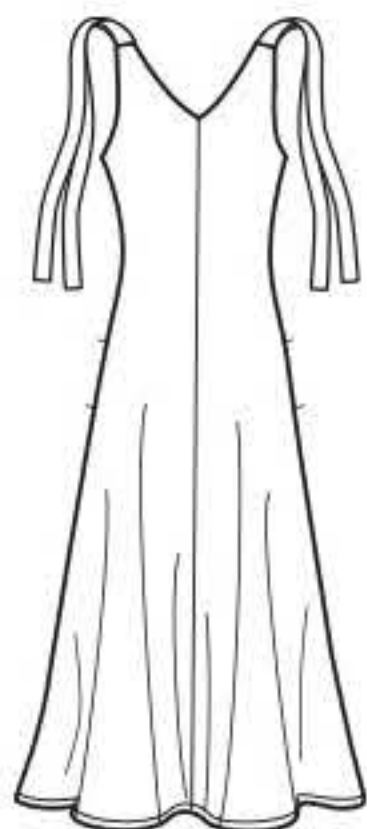


# N6669

10 PIECES/PIEZAS



A



B

## MISSES' SEVEN SIZES IN ONE

Sizes	10	12	14	16	18	20	22	
European Size	36	38	40	42	44	46	48	
Bust	32½	34	36	38	40	42	44	In
Waist	25	26½	28	30	32	34	37	"
Hip	34½	36	38	40	42	44	46	"
Back-neck to waist	16	16¼	16½	16¾	17	17¼	17¾	"

### A,B Lining- Sized for stretch knits only

60"***	⅝	⅝	⅝	⅝	⅝	⅝	⅝	Yd
--------	---	---	---	---	---	---	---	----

A,B Interfacing- ⅞ yd. of 20" to 25" lightweight fusible

### A- Sized for stretch knits only

60"***	2⅞	2¼	2¼	2¼	2¾	2¾	2¾	Yd
--------	----	----	----	----	----	----	----	----

### B- Sized for stretch knits only

60"***	2⅞	2⅞	2⅞	2⅞	2⅞	2⅞	2⅞	Yd
--------	----	----	----	----	----	----	----	----

## GARMENT MEASUREMENTS

A,B Bust	32½	34	36	38	40	42	44	In
----------	-----	----	----	----	----	----	----	----

A,B Hip	43½	45	47	49	51	53	55	"
---------	-----	----	----	----	----	----	----	---

### Finished Back Length from base of neck:

A	40	40¼	40½	40¾	41	41¼	41½	In
---	----	-----	-----	-----	----	-----	-----	----

B	50	50¼	50½	50¾	51	51¼	51½	"
---	----	-----	-----	-----	----	-----	-----	---

A	68	69½	71½	73½	75½	77½	79½	"
---	----	-----	-----	-----	-----	-----	-----	---

B	85	86½	88½	90½	92½	94½	96½	"
---	----	-----	-----	-----	-----	-----	-----	---

## SUGGESTED FABRICS

Sized for stretch knits only such as: Interlock, Jersey, Ponte, Stretch Velvet.

Lining in Tricot. See Pick-A-Knit® Rule. Suitable for Overlock/Serger. Allow extra fabric for matching plaids or stripes.

## REQUIREMENTS

Thread, 1¼ yds. of ¾" wide elastic.

## JEUNE FEMME: PATRON SEPT TAILLES / SEÑORITAS: PATRON SIETE TALLAS

Tailles / Tallas	10	12	14	16	18	20	22	
Tailles Françaises	38	40	42	44	46	48	50	
Tallas Europeas	36	38	40	42	44	46	48	
Poitrine / Busto	83	87	92	97	102	107	112	cm
Taille / Cintura	64	67	71	76	81	89	94	"
Hanches /Caderas	88	92	97	102	107	112	117	"
Dos (encolure à Taille) / Espalda (escote a cintura)	40.5	41.5	42	42.5	43	44	44	cm

### A,B Doublure- Pour les jerseys extensibles seulement

### A,B Forro- Para las mallas estirables solamente

150cm**	0.50	0.50	0.50	0.50	0.50	0.50	0.60	m
---------	------	------	------	------	------	------	------	---

A,B Entoilage- 0.80m de 51cm à 64cm, léger, thermocollant

A,B Entretela- 0.80m de 51cm a 64cm, ligera, adhesiva

### A- Pour les jerseys extensibles seulement/ Para las mallas estirables

### solamente

150cm**	2.00	2.00	2.10	2.10	2.10	2.10	2.10	m
---------	------	------	------	------	------	------	------	---

### B- Pour les jerseys extensibles seulement/ Para las mallas estirables

### solamente

150cm**	2.60	2.60	2.60	2.60	2.60	2.70	2.70	m
---------	------	------	------	------	------	------	------	---

## TISSUS SUGGERES

Pour les jerseys extensibles seulement tels que: Interlock, Jersey, Ponte, Velours Extensible. Doublure en Tricot. Voyez la Règle-Pour-Choisir-Un-Jersey®. Ces modèles conviennent pour la machine Overlock/Surjeteuse. Prévoyez davantage de tissu pour raccorder les écossais ou rayures.

## MERCERIE

Fil, 1.20m d'élastique de 2cm de large.

## TELAS SUGERIDAS

Para las mallas estirables solamente como: Interlock, Mallas, Ponte, Terciopelo Estirable. Forro en Tricot. Vea la Regla-Para-Escoger-las-Mallas®. Estos modelos convienen para la máquina Overlock/Sobrehiladora. Se necesita tela extra para casar cuadros o rayas.

## MERCERIA

Hilo, 1.20m de elástico de 2cm de ancho.

\*without nap \*\*with nap \*\*\*with or without nap

\*sans sens \*\*avec sens \*\*\*avec ou sans sens

\*sin pelusa \*\*con pelusa \*\*\*sin o con pelusa

**N6669**  
 SIZE / TAILLE / TALLA  
 U.S. 10-22  
 FR. 38-50  
 A EURO. 36-48