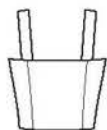
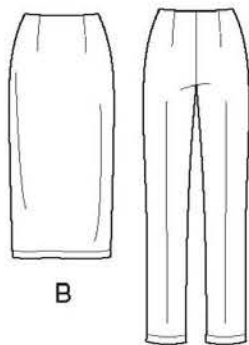


18 PIECES/PIEZAS
Métrages et instructions
de couture en Français à
l'intérieur de l'enveloppe.



A



B

C

MISSES' SEVEN SIZES IN ONE

Sizes	6	8	10	12	14	16	18	
European Sizes	32	34	36	38	40	42	44	
Bust	30½	31½	32½	34	36	38	40	In
Waist	23	24	25	26½	28	30	32	"
Hips	32½	33½	34½	36	38	40	42	"
Back-neck to waist	15½	15¾	16	16¼	16½	16¾	17	"

A								
45***	¾	¾	¾	¾	1	1	1	Yd
60***	¾	¾	¾	¾	¾	¾	¾	"

Interfacing- 1 yd. of 20" to 25" lightweight fusible, such as Pellon®

B								
45" to 60***	2	2	2	2	2	2	2	Yd

Interfacing- 1½ yd. of 20" to 25" lightweight fusible, such as Pellon®

C								
45***	1½	2½	2½	2½	2½	2½	2½	Yd
60***	1½	1½	1½	1½	1½	1½	1½	"

Interfacing- ¾ yd. of 20" to 25" lightweight fusible, such as Pellon®

GARMENT MEASUREMENTS

A Bust	33	34	35	36½	38½	40½	42½	In
B Hip	35	36	37	38½	40½	42½	44½	"
C Hip	34½	35½	36½	38	40	42	44	"
B Length	30	30	30	30	30	30	30	"
C Side Length	36	37	38	39½	41½	43½	35½	"
C Leg Width	13½	13¾	14	14¼	14½	14¾	15	"

SUGGESTED FABRICS

Chino, Chintz, Cotton Types, Damask, Dupioni, Lightweight Denim, Linen Types, Madras, Pique, Shantung, Stretch Wovens. Allow extra fabric for matching plaids or stripes.

REQUIREMENTS

Thread. **A:** Five 1" buttons. **B:** Six 1" buttons. **C:** One 7" zipper.

*without nap **with nap ***with or without nap

JEUNE FEMME: PATRON SEPT TAILLES/SEÑORITAS: PATRON SIETE TALLAS

Tailles / Tallas	6	8	10	12	14	16	18	
Tailles Française	34	36	38	40	42	44	46	
Tallas Europeas	32	34	36	38	40	42	44	
Poitrine / Busto	78	80	83	87	92	97	102	cm
Taille / Cintura	58	61	64	67	71	76	81	"
Hanches / Caderas	83	85	88	92	97	102	107	"
Dos (encolure à Taille) / Espalda (escote a cintura)								
	39.5	40	40.5	41.5	42	42.5	43	cm

A								
115cm**	0.80	0.80	0.80	0.80	0.90	0.90	0.90	m
150cm**	0.70	0.70	0.70	0.70	0.80	0.80	0.80	"

Entoilage- 0.90m de 51cm à 64cm, léger, thermocollant tel que Pellon®

Entretela- 0.90m de 51cm a 64cm, ligera, adhesiva como Pellon®

B								
115cm à/a 150cm**	1.80	1.80	1.80	1.80	1.80	1.80	1.80	m

Entoilage- 1.10m de 51cm à 64cm, léger, thermocollant tel que Pellon®

Entretela- 1.10m de 51cm a 64cm, ligera, adhesiva como Pellon®

C								
115cm**	1.50	1.90	1.90	2.00	2.20	2.20	2.20	m
150cm**	1.30	1.30	1.40	1.40	1.40	1.40	1.40	"

Entoilage- 0.30m de 51cm à 64cm, léger, thermocollant tel que Pellon®

Entretela- 0.30m de 51cm a 64cm, ligera, adhesiva como Pellon®

TISSUS SUGGERES

Chino, Chintz, Cotonnades, Damas, Soie Dupioni, Denim Léger, Toile de Lin, Madras, Piqué, Shantung, Tissus Extensibles. Prévoyez davantage de tissu pour raccorder les écosais ou rayures.

MERCERIE

Fil. **A:** Cinq boutons de 2.5cm. **B:** Six boutons de 2.5cm. **C:** Une glissière de 18cm.

TELAS SUGERIDAS

Chino, Chintz, Mezclas de Algodones, Damasco, Seda Dupioni, Dril Ligero, Tela de Lino, Madras, Piqué, Shantung, Telas Estirables. Se necesita tela extra para casar cuadros o rayas.

MERCERIA

Hilo. **A:** Cinco botones de 2.5cm. **B:** Seis botones de 2.5cm. **C:** Una cremallera de 18cm.

*sans sens **avec sens ***avec ou sans sens

*sin pelusa **con pelusa ***sin o con pelusa

N6627
SIZE / TAILLE / TALLA
U.S. 6-18
FR. 34-46
A EURO. 32-44