

**8091**

12 PIECES/PIEZAS

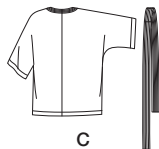
Métrages et Instructions de couture en Français à l'intérieur de l'enveloppe.



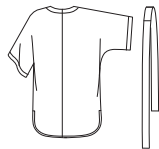
A



B



C



D

**MISSSES' PULLOVER KIMONO STYLE DRESS, COCOON KIMONO AND WRAP KIMONO WITH LENGTH VARIATIONS AND TIE BELT**

**Fabrics:** Batiks, Challis, Crepe Back Satin, Crepe De Chine, Double Georgette, Linen Types, Silky Types. Extra fabric needed to match plaids, stripes or one-way design fabrics.

**Notions:** Thread. Look for Simplicity Trims.

**BODY MEASUREMENTS (For Sizing Help Visit [www.simplicity.com/sizehelp](http://www.simplicity.com/sizehelp))**

**Bust** 29½ 30½-31½ 32½-34 36-38 40-42 44-46 48 In

**Waist** 22 23-24 25-26½ 28-30 32-34 37-39 41½ "

**Hip-9" below waist**

31½ 32½-33½ 34½-36 38-40 42-44 46-48 50 "

**Back-neck to waist**

15¼ 15½-15¾ 16-16¼ 16½-16¾ 17-17¼ 17½-17¾ 17¾ "

**Pattern Size** XXS XS S M L XL XXL

4 6-8 10-12 14-16 18-20 22-24 26

**Sizes-European**

30 32-34 36-38 40-42 44-46 48-50 52

**A Kimono Dress**

45\*\*\* 3% 3% 3% 3¾ 4 4¼ 4½ In

60\*\*\* 2% 2¼ 2% 2½ 2¾ 3 3¼ "

**B Kimono**

45\*\*\* 2¾ 2% 3 3% 3% 3¼ 3% In

60\*\*\* 1¾ 1¾ 1% 2% 2¼ 2% 2¾ "

**Interfacing-** 1½ yd. of 20" to 25" lightweight fusible, such as Pellon®

**C Kimono**

45\*\*\* 2¼ 2% 2% 2% 3¼ 3% 3% In

60\*\*\* 1% 1% 1¾ 1¾ 1¾ 2% 2% "

**Interfacing-** 1¼ yd. of 20" to 25" lightweight fusible, such as Pellon®

**D Kimono**

45\*\*\* 2¼ 2% 2% 2% 3¼ 3% 3% In

60\*\*\* 1¾ 1¾ 1¾ 1¾ 1% 2% 2% "

**Interfacing-** 1¼ yd. of 20" to 25" lightweight fusible, such as Pellon®

**FINISHED GARMENT MEASUREMENTS (Includes Design and Wearing EASE)**

**C, D Bust** 40 42½ 45 49 53 57 61 In

**Finished back length from base of neck:**

A 33 33½ 34 34½ 35 35½ 36 In

B 28 28½ 29 29½ 30 30½ 31 "

C 24 24½ 25 25½ 26 26½ 27 "

D 28½ 29 29½ 30 30½ 31 31½ "

\*without nap \*\*with nap \*\*\*with or without nap

**JEUNE FEMME: ROBE DE STYLE KIMONO, KIMONO VESTE ET KIMONO DRAPÉ DE DIFFÉRENTES LONGUEURS ET CEINTURE NOUÉE**

**Tissus:** Batiks, Chali, Crêpe de Satin, Crêpe de Chine, Crêpe Georgette Double, Toile de Lin, Tissus Soyeux. Prévoyez davantage de tissu pour raccorder les écosais, les rayures ou les motifs unidirectionnels.

**Mercurie:** Fil. Demandez les garnitures de Simplicity.

**SEÑORITAS: VESTIDO DE ESTILO KIMONO, KIMONO CHAQUETA Y KIMONO DRAPEADO EN DIFERENTES LARGOS Y CINTURÓN DE LAZO**

**Telares:** Batik, Chali, Crepé de Satén, Crepé de China, Crepé Georgette Doble, Tela de Lino, Telas Sedosas. Se necesita tela adicional para casar cuadros, rayas o telas estampadas en una dirección.

**Mercuría:** Hilo. Pida los adornos de Simplicity.

**MESURES NORMALISÉES / MEDIDAS DEL CUERPO**

**Poitrine / Buste**

75 78-80 83-87 92-97 102-107 112-117 122 cm

**Taille / Cintura**

56 58-61 64-67 71-76 81-87 94-99 106 "

**Hanches (23cm au-dessous de la taille) / Caderas (23cm abajo de la cintura)**

80 83-85 88-92 97-102 107-112 117-122 127 cm

**Dos (encolure à taille) / Espalda (escote a cintura)**

38.5 39.5-40 40.5-41.5 42-42.5 43-44 44-44.5 44.5 cm

**Tailles / Tallas**

TTP TP P M G TG TTG

4 6-8 10-12 14-16 18-20 22-24 26

**Françaises / Europeas**

32 34-36 38-40 42-44 46-48 50-52 54

30 32-34 36-38 40-42 44-46 48-50 52

**A Robe Kimono/ A Vestido Kimono**

115cm\*\* 3.00 3.10 3.30 3.50 3.70 3.90 4.10 m

150cm\*\* 2.00 2.00 2.10 2.30 2.50 2.70 3.00 "

**B Kimono/ B Kimono**

115cm\*\* 2.50 2.60 2.70 2.80 2.90 3.00 3.10 m

150cm\*\* 1.60 1.60 1.70 1.90 2.10 2.40 2.50 "

**Entoilage-** 1.00m de 51cm à 64cm, léger, thermocollant tel que Pellon®

**Entretela-** 1.00m de 51cm à 64cm, ligera, adhesiva como Pellon®

**C Kimono / C Kimono**

115cm\*\* 2.10 2.10 2.30 2.40 3.00 3.10 3.10 m

150cm\*\* 1.50 1.50 1.60 1.60 1.60 2.30 2.30 "

**Entoilage-** 1.10m de 51cm à 64cm, léger, thermocollant tel que Pellon®

**Entretela-** 1.10m de 51cm à 64cm, ligera, adhesiva como Pellon®

**D Kimono/ D Kimono**

115cm\*\* 2.10 2.10 2.20 2.40 3.00 3.10 3.20 m

150cm\*\* 1.60 1.60 1.60 1.60 1.70 2.30 2.30 "

**Entoilage-** 1.10m de 51cm à 64cm, léger, thermocollant tel que Pellon®

**Entretela-** 1.10m de 51cm à 64cm, ligera, adhesiva como Pellon®

\*sans sens \*\*avec sens \*\*\*avec ou sans sens

\*sin pelusa \*\*con pelusa \*\*\*con o sin pelusa