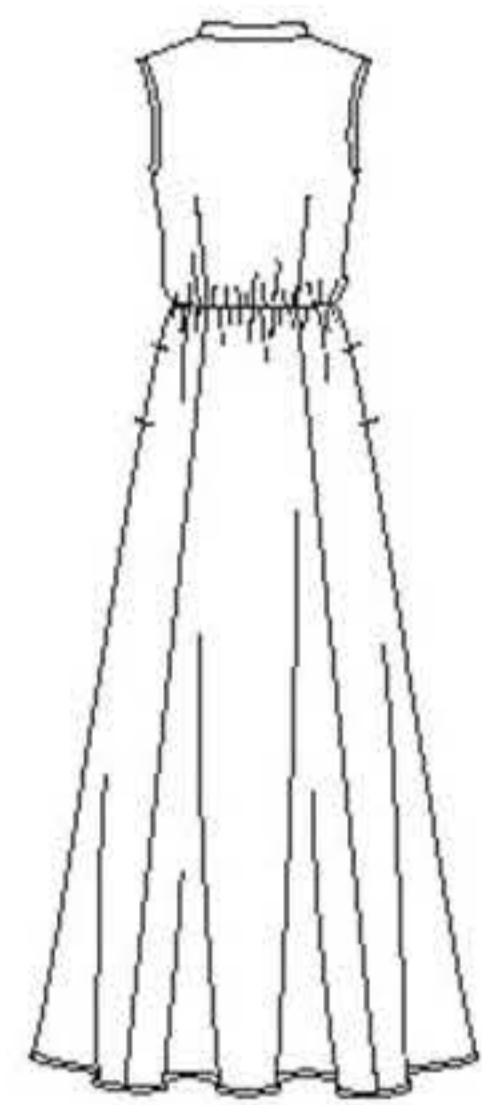


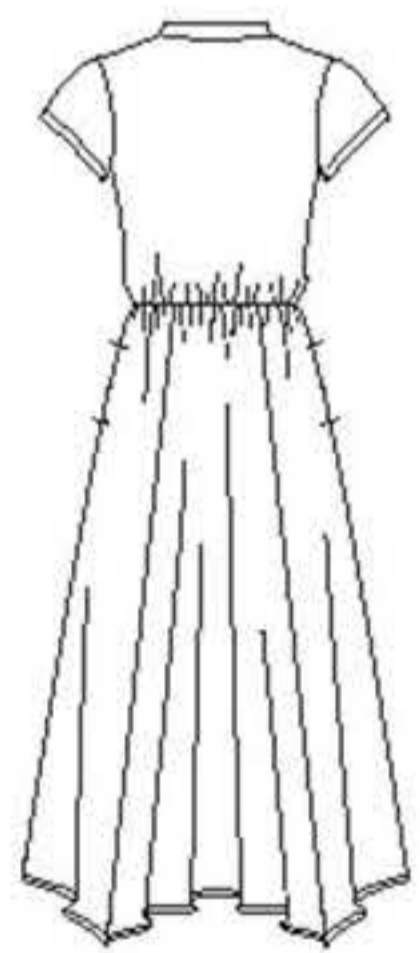
# 8384

12 PIECES/PIEZAS

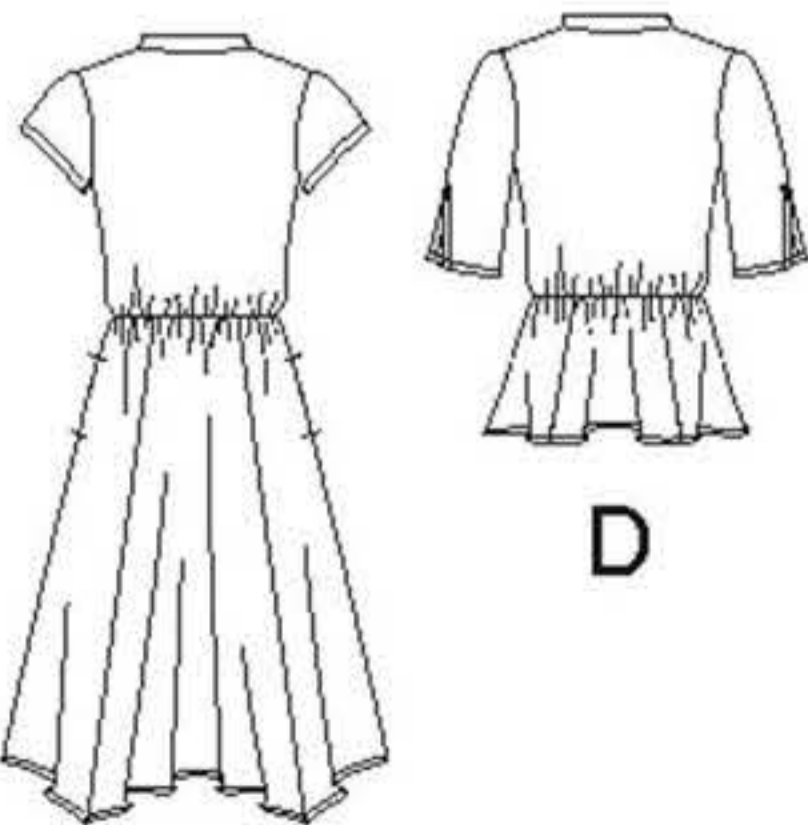
Métrages et Instructions de couture en Français à l'intérieur de l'enveloppe.



A



B



C

D

## MISSSES' DRESS WITH LENGTH VARIATIONS AND TOP

**Fabrics:** Stable lightweight to medium-weight fabrics such as: Batiks, Batiste, Challis, Chambray, Cotton Lawn, Cotton Types, Dotted Swiss, Eyelet, Gingham, Lightweight Denim, Linen Types, Pique, Poplin, Seersucker, and Shirtings. Extra fabric needed to match plaids, stripes or one-way design fabrics.

**Notions:** Thread, three 5/8" buttons. **A:** one pkg. of 1/2" wide single fold bias tape. Look for Simplicity Trims.

### BODY MEASUREMENTS (For Sizing Help Visit [www.simplicity.com/sizehelp](http://www.simplicity.com/sizehelp))

<b>Bust</b>	30½	31½	32½	34	36	38	40	42	44	46	In
<b>Waist</b>	23	24	25	26½	28	30	32	34	37	39	"
<b>Hip-9" below waist</b>	32½	33½	34½	36	38	40	42	44	46	48	"
<b>Back-neck to waist</b>	15½	15¾	16	16¼	16½	16¾	17	17¼	17¾	17½	"
<b>Sizes</b>	6	8	10	12	14	16	18	20	22	24	
<b>European</b>	32	34	36	38	40	42	44	46	48	50	

**A,B,C,D Interfacing-** ¾ yd. of 20" to 25" lightweight fusible, such as Pellon®

**Elastic-** ¾ yd. of ¼" wide

### A Dress

45***	4¼	5¾	5¾	5¾	5¾	5¾	5¾	5¾	5½	5½	Yd
60***	3¾	3¾	3¾	3¾	3¾	3¾	3¾	3¾	4	4½	"

### B Dress

45***	3¾	4	4½	4½	4½	4½	4½	4½	4¾	4¾	Yd
60***	2½	2½	2½	2½	2½	2¾	2¾	2¾	2¾	3	"

### C Dress

45***	2½	2¾	2¾	2¾	3	3½	3½	3½	3½	4	Yd
60***	2¼	2¼	2¼	2¼	2¼	2¾	2¾	2¾	2½	2½	"

### D Top

45***	1½	1½	1½	1½	1½	1¾	1¾	1¾	1¾	2	Yd
60***	1¼	1¼	1¼	1¾	1¾	1¾	1¾	1¾	1½	1½	"

### FINISHED GARMENT MEASUREMENTS (Includes Design and Wearing EASE)

<b>A,B,C,D Bust</b>	35½	36½	37½	39	41	43	45	47	49	51	In
<b>Finished back length from base of neck</b>											
<b>A</b>	55½	55¾	56	56¼	56½	56¾	57	57¼	57½	57¾	In
<b>B</b>	43½	43¾	44	44¼	44½	44¾	45	45¼	45½	45¾	"
<b>C</b>	37½	37¾	38	38¼	38½	38¾	39	39¼	39½	39¾	"
<b>D</b>	22½	22¾	23	23¼	23½	23¾	24	24¼	24½	24¾	"

\*without nap \*\*with nap \*\*\*with or without nap

## JEUNE FEMME: ROBE AVEC CHOIX DE LONGUEURS ET DE HAUTS

**Tissus:** Tissus fermes, légers à moyens tels que: Batiks, Batiste, Étamine, Chambray, Linon de Coton, Cotonnades, Plumetis, Broderie anglaise, Vichy, Denim léger, Toile de Lin, Piqué, Popeline fine, Seersucker et Shirting. Prévoyez davantage de tissu pour raccorder les écossais, rayures ou motifs unidirectionnels.

**Mercerie:** Fil, trois de boutons de 1.5cm. **A:** Un paquet de ruban de biais simple de 1.3cm de large. Demandez les garnitures de Simplicity.

## SEÑORITAS: VESTIDO CON DIFERENTES LARGOS Y BLUSAS

**Telas:** Telas firmes ligeras a medianas como: Batik, Batista, Chali, Chambray, Linón de Algodón, Mezclas de Algodones, Plumetis, Bordado inglés, Guingán, Dril ligero, Tela de Lino, Piqué, Popelina fina, Seersucker y Shirting. Se necesita tela adicional para casar cuadros, rayas o telas estampadas en una dirección.

**Mercería:** Hilo, tres botones de 1.5cm. **A:** Un paquete de cinta de bias sencillo de 1.3cm de ancho. Pida los adornos de Simplicity.

### MESURES NORMALISÉES/MEDIDAS DEL CUERPO

<b>Poitrine/Busto</b>	78	80	83	87	92	97	102	107	112	117	cm
<b>Taille/Cintura</b>	58	61	64	67	71	76	81	87	94	99	"
<b>Hanches (23cm au-dessous de la taille)/Caderas (23cm abajo de la cintura)</b>	83	85	88	92	97	102	107	112	117	122	cm
<b>Dos (encolure à taille)/Espalda (escote a cintura)</b>	39.5	40	40.5	41.5	42	42.5	43	44	44	44.5	cm
<b>Tailles/Tallas</b>	6	8	10	12	14	16	18	20	22	24	
<b>Françaises</b>	34	36	38	40	42	44	46	48	50	52	
<b>Europeas</b>	32	34	36	38	40	42	44	46	48	50	

**A,B,C,D Entoilage-** 0.60m de 51cm à 64cm, léger, thermocollant como Pellon®

**A,B,C,D Entretela-** 0.60m de 51cm a 64cm, ligera adhesiva, como Pellon®

**Élastique-** 0.70m de 6mm de large / **Elástico-** 0.70m de 6mm de largo

### A Robe/ A Vestido

115cm**	3.80	4.90	4.90	4.90	4.90	5.00	5.00	5.00	5.00	5.00	m
150cm**	3.40	3.40	3.40	3.40	3.40	3.40	3.40	3.50	3.60	3.80	"

### B Robe/ B Vestido

115cm**	3.50	3.60	3.70	3.90	4.10	4.20	4.20	4.30	4.30	4.30	m
150cm**	2.30	2.30	2.40	2.40	2.40	2.50	2.50	2.50	2.60	2.70	"

### C Robe/ C Vestido

115cm**	2.40	2.50	2.60	2.70	2.80	2.90	3.00	3.10	3.30	3.60	m
150cm**	2.00	2.00	2.00	2.00	2.10	2.20	2.20	2.20	2.20	2.20	"

### D Haut/ D Blusa

115cm**	1.40	1.50	1.50	1.50	1.50	1.70	1.70	1.70	1.70	1.90	m
150cm**	1.20	1.20	1.20	1.20	1.20	1.20	1.20	1.20	1.30	1.40	"

\*sans sens \*\*avec sens \*\*\*avec ou sans sens \*sin pelusa \*\*con pelusa \*\*\*sin o con pelusa

TO BE USED FOR INDIVIDUAL PRIVATE HOME USE ONLY AND NOT FOR COMMERCIAL OR MANUFACTURING PURPOSES. / A USAGE PRIVÉ SEULEMENT ET NON À DES FINS COMMERCIALES OU DE PRODUCTION EN SÉRIE. / PARA USO PRIVADO SOLAMENTE, NO SE PUEDE UTILIZAR CON PROPOSITOS DE COMERCIALIZACION O DE PRODUCCION EN SERIE.