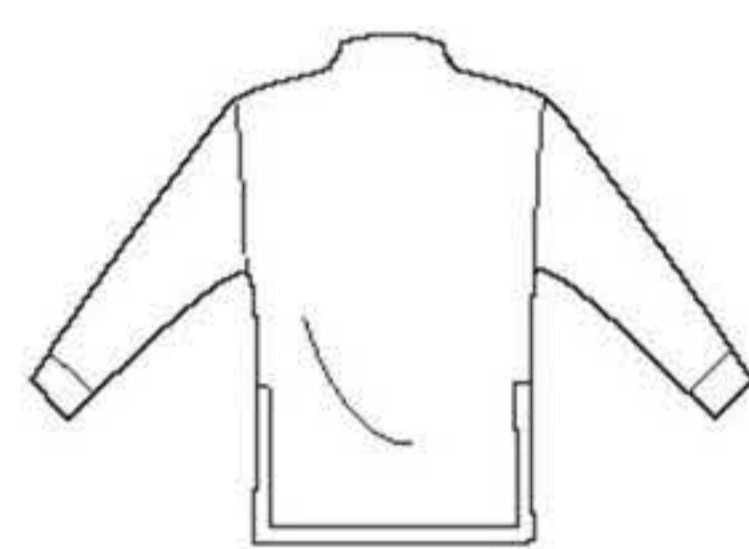


8529

12 PIECES/PIEZAS

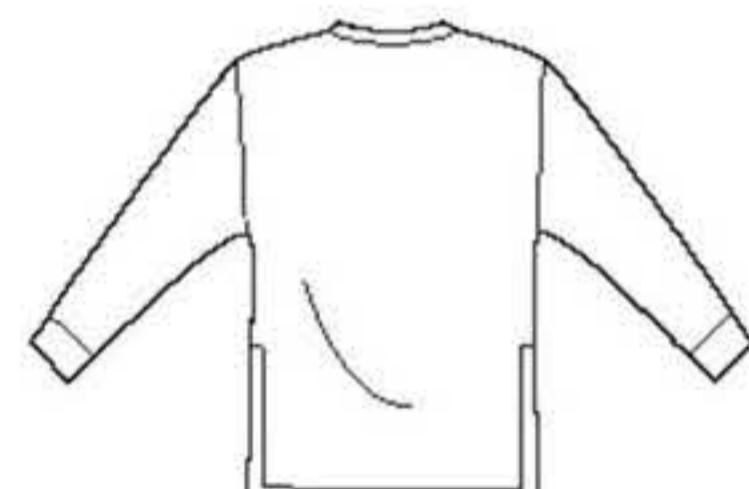
Métrages et Instructions de couture en Français à l'intérieur de l'enveloppe.



A



B



C



D

MISSSES' KNIT SWEATERS

Fabrics: Sized for stretch knits only: Double Knits, Ponte, Sweater Knit, Sweatshirt Fleece, Velour, Wool Jersey. See Pick-A-Knit® Rule. Suitable for Overlock/Serger. Extra fabric needed to match plaids, stripes or one-way design fabrics.

Notions: Thread. Look for Simplicity Trims.

BODY MEASUREMENTS (For Sizing Help Visit www.simplicity.com/sizehelp)

Bust	30½-31½	32½-34	36-38	40-42	44-46	In
Waist	23-24	25-26½	28-30	32-34	37-39	"
Hip-9" below waist	32½-33½	34½-36	38-40	42-44	46-48	"
Back-neck to waist	15½-15¾	16-16¼	16½-16¾	17-17¼	17¾-17½	"

Sizes	XS	S	M	L	XL	
	6-8	10-12	14-16	18-20	22-24	
Sizes-European	32-34	36-38	40-42	44-46	48-50	

A Sweater						
60"***	1½	1⅝	1⅝	1⅝	2	Yd

B Sweater						
60"***	1¾	1¾	1⅝	1⅝	1⅞	Yd

C Sweater						
60"***	1¾	1½	1½	1½	1¾	Yd

D Sweater						
60"***	1¼	1¼	1½	1½	1⅝	Yd

Contrast Neckband and Sleeve Bands- ¾ yd of 60"

FINISHED GARMENT MEASUREMENTS (Includes Design and Wearing EASE)

A,B,C,D Bust	35½	38	42	46	50	In
Finished back length from base of neck						
A,C	24½	25	25½	26	26½	In
B,D	21½	22	22½	23	23½	"

*without nap **with nap ***with or without nap

JEUNE FEMME: SWEATERS EN JERSEY

Tissus: Pour les jerseys extensibles seulement: Jersey Double, Jersey Ponte, Jersey pour Sweater, Molleton pour Sweater, Velours fin, Jersey de laine. Voyez la Règle-Pour-Choisir-le-Jersey®. Prévoyez davantage de tissu pour raccorder les écossais, rayures ou motifs unidirectionnels.

Mercerie: Fil. Demandez les garnitures de Simplicity Trims.

SEÑORITAS: SUDADERAS DE MALLAS

Telas: Para las mallas estirables solamente: Mallas Dobles, Mallas Ponte, Mallas Ponte, Mallas para Sudaderas, Muletón para Sudaderas, Terciopelo fino, Mallas de Lana. Vea la Regla-Para-Escoger-las-Mallas®. Se necesita tela adicional para casar cuadros, rayas o telas estampadas en una dirección.

Mercería: Pida los adornos de Simplicity Trims.

MESURES NORMALISÉES/MEDIDAS DEL CUERPO

Poitrine/Busto	78-80	83-87	92-97	102-107	112-117	cm
Taille/Cintura	58-61	64-67	71-76	81-87	94-99	"
Hanches (23cm au-dessous de la taille)/Caderas (23cm abajo de la cintura)	83-85	88-92	97-102	107-112	117-122	cm

Dos (encolure à taille)/Espalda (escote a cintura)	39.5-40	40.5-41.5	42-42.5	43-44	44-44.5	cm
---	---------	-----------	---------	-------	---------	----

Tailles/Tallas	TP/XP	P	M	G	TG/XG	
	6-8	10-12	14-16	18-20	22-24	
Tailles-Françaises	34-36	38-40	42-44	46-48	50-52	
Tallas-Europeas	32-34	36-38	40-42	44-46	48-50	

A Sweater/ A Sudadera						
150cm**	1.40	1.40	1.40	1.40	1.80	m

B Sweater/ B Sudadera						
150cm**	1.20	1.30	1.50	1.50	1.70	m

C Sweater/ C Sudadera						
150cm**	1.30	1.30	1.30	1.30	1.60	m

D Sweater/ D Sudadera						
150cm**	1.10	1.10	1.30	1.40	1.50	m

Bandes d'Encolure et de Manches Contrastantes - 0.30m de 150cm**

Bandas del Escote y de Mangas Contrastantes - 0.30m de 150cm**

*sans sens **avec sens ***avec ou sans sens *sin pelusa **con pelusa ***sin o con pelusa

TO BE USED FOR INDIVIDUAL PRIVATE HOME USE ONLY AND NOT FOR COMMERCIAL OR MANUFACTURING PURPOSES. / A USAGE PRIVÉ SEULEMENT ET NON À DES FINS COMMERCIALES OU DE PRODUCTION EN SÉRIE. / PARA USO PRIVADO SOLAMENTE, NO SE PUEDE UTILIZAR CON PROPOSITOS DE COMERCIALIZACION O DE PRODUCCION EN SERIE.