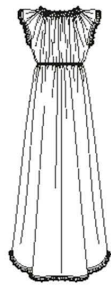
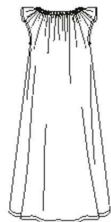


8799

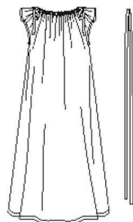
4 PIECES/PIEZAS



A



B



C

MISSES' VINTAGE NIGHTGOWNS

Fabrics: Broadcloth, Challis, Cotton Lawn, Cotton Types, Crepe de Chine, Silky Types, Voile. Extra fabric needed to match plaids, stripes or one-way design fabrics.

Notions: Thread, one pkg. of ½" wide single fold bias tape. Look for Simplicity Trims.

BODY MEASUREMENTS (For Sizing Help Visit www.simplicity.com/sizehelp)

Bust	30½-31½	32½-34	36-38	40-42	44-46	In
Waist	23-24	25-26½	28-30	32-34	37-39	"
Hip-9" below waist	32½-33½	34½-36	38-40	42-44	46-48	"
Back-neck to waist	15½-15¾	16-16¼	16½-16¾	17-17¼	17½-17¾	"
Sizes	XS	S	M	L	XL	
	6-8	10-12	14-16	18-20	22-24	
Sizes-European	32-34	36-38	40-42	44-46	48-50	

A Nightgown

45***	3¾	3½	3½	3½	3½	Yd
60***	3¼	3¼	3%	3%	3%	"

Trim- 5 ½ yd. of ½" to ¾" wide ruffled lace or eyelet

Ribbon- 4 ½ yd. of ¾" wide

B Nightgown

45***	3	3	3	3¾	3¾	Yd
60***	2¾	2¾	2¾	2¾	3	"

Ribbon- 2 ½ yd. of ¾" wide

C Nightgown

45***	3	3	3	3¾	3¾	Yd
60***	2¾	2¾	2¾	2¾	3	"

Ribbon- 3 ¾ yd. of ¾" wide

FINISHED GARMENT MEASUREMENTS (Includes Design and Wearing EASE)

Finished back length from base of neck:

A	54	54½	55	55½	56	In
B,C	46	46½	47	47½	48	"

*without nap **with nap ***with or without nap

JEUNE FEMME: CHEMISE DE NUIT CLASSIQUES

Tissus: Popeline, Étamine, Linon de Coton, Cotonnades, Crêpe de Chine, Tissus Soyeux, Voile. Prévoyez davantage de tissu pour raccorder les écossais, rayures ou motifs unidirectionnels.

Merceria: Fil, un paquet de ruban de biais simple de 1.3cm de large. Demandez la mercerie Simplicity Trims.

SEÑORITAS: CAMISA DE DORMIR CLÁSICAS

Telas: Popelina, Chalf, Linón de Algodón, Mezclas de Algodones, Crepé de China, Telas Sedosas, Velo. Se necesita tela adicional para casar cuadros, rayas o telas estampadas en una dirección.

Merceria: Hilo, un paquete cinta de bias sencillo de 1.3cm de ancho. Pida la mercería Simplicity Trims.

MESURES NORMALISÉES/MEDIDAS DEL CUERPO

Poitrine/Busto	78-80	83-87	92-97	102-107	112-117	cm
Taille/Cintura	58-61	64-67	71-76	81-87	94-99	"
Hanches (23cm au-dessous de la taille)/Caderas (23cm abajo de la cintura)	83-85	88-92	97-102	107-112	117-122	cm
Dos (encolure à taille)/Espalda (escote a cintura)	39.5-40	40.5-41.5	42-42.5	43-44	44-44.5	cm
Tailles/Tallas	TP/XP	P	M	G	TG/XG	
	6-8	10-12	14-16	18-20	22-24	
Tailles-Françaises	34-36	38-40	42-44	46-48	50-52	
Tallas-Europeas	32-34	36-38	40-42	44-46	48-50	

A Chemise de Nuit Classiques/A Camisa de Dormir Clásicas

115cm**	3.10	3.10	3.20	3.20	3.20	m
150cm**	3.00	3.00	3.00	3.00	3.10	"

Garniture- 4.70m de dentelle volante ou de broderie anglaise de 1.3cm à 2cm de large

Adorno- 4.70m de encaje con volante o de bordado inglés de 1.3cm a 2cm de ancho

Ruban- 4.10m de 1cm de large/Cinta- 4.10m de 1cm de ancho

B Chemise de Nuit Classiques/B Camisa de Dormir Clásicas

115cm**	2.70	2.80	2.80	2.80	2.80	m
150cm**	2.60	2.60	2.60	2.70	2.70	"

Ruban- 2.00m de 1cm de large/Cinta- 2.00m de 1cm de ancho

C Chemise de Nuit Classiques/C Camisa de Dormir Clásicas

115cm**	2.70	2.80	2.80	2.80	2.80	m
150cm**	2.60	2.60	2.60	2.70	2.70	"

Ruban- 3.40m de 1cm de large/Cinta- 3.40m de 1cm de ancho

*sans sens **avec sens ***avec ou sans sens *sin pelusa **con pelusa ***sin o con pelusa