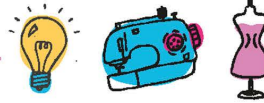


Congratulations! 🎉

You picked **The Chloe Hat & Scarf Set** pattern! Get ready to learn to sew with the Handwork Studio Method. We aim to pass down the tradition of machine sewing to the next generation of crafters, makers and sewers. We've taken our method for sewing success to create this educational pattern exclusively for kids.

Supplies Needed

- Fabric: 1 Yd. of a 58" to 60" wide fleece
- A spool of all purpose thread in either matching or contrasting color
- Fabric scissors
- Measuring tape
- Plastic ball head straight pins (at least 1½")
- Seam ripper
- Masking or painters' tape
- Pen or marker
- Sewing machine with needle and bobbin
- Ballpoint needle for your sewing machine



What will you learn?!

- How to use this pattern correctly
- Proper sewing terms
- Understand pattern layout, pinning and cutting
- Basic machine sewing knowledge including
 - Threading a sewing machine
 - Finding threading instructions for your sewing machine (see video tutorial)
 - Sewing a straight line and pivot
 - Back-stitching

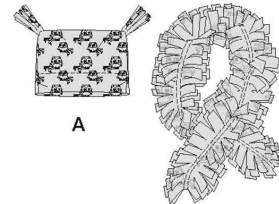
Size Chart



Don't forget to measure your head!

Match Your Head Measurement to the Size*	S	M	L	XL
Head Measurement	20"	21"	22"	23"

*If your head measurement falls between sizes, choose the larger size.



A Beginner Sewer Should:

- Have little or no sewing experience
- Have access to a sewing machine
- Work with someone who can help
- Be able to read and understand instructions if sewing alone
- Have patience when learning something new
- Want a challenge
- Understand that mistakes are okay!

Ask for adult help until you are comfortable using a sewing machine.



The Handwork Studio, LLC. is a needle arts, machine sewing, and fashion community teaching kids with classes, camps, and online tutorials since 2001. To find machine sewing camp locations, go to www.TheHandworkStudio.com.



@TheHandworkStudio



@HandworkStudio



@TheHandworkStudio



HandworkStudio!