

S8997

16 PIECES/PIEZAS

TODDLERS' AND CHILDREN'S PANTS AND KNIT TOP AND HAT

Fabrics: **A,B Top and E Hat** sized for stretch knits only: Ponte, Sweatshirt Fleece. See Pick-A-Knit® Rule. Suitable for Overlock/Serger. **A,B Sleeves and Lower Band, B Pocket and C Front** in Flannel. **C,D Pants** in Corduroy, Denim, Twill. **E Hat Pom-Pom** in Faux Fur/Fur-Like Fabrics. Extra fabric needed to match plaids, stripes or one-way design fabrics.

Notions: Thread. **A,B:** ¾ yd. of ¼" wide cord. **C,D:** ¾ yd. of ¾" wide elastic.
E: 1 oz. of polyester fiberfill.

BODY MEASUREMENTS (For Sizing Help Visit www.simplicity.com/sizehelp)

| | | | | | | | | | | |
|---------------------------|----|-----|----|-----|----|-----|-----|-----|-----|----|
| Chest | 19 | 20 | 21 | 22 | 23 | 24 | 25 | 26 | 27 | In |
| Waist | 19 | 19½ | 20 | 20½ | 21 | 21½ | 22 | 23 | 23½ | " |
| Back-neck to waist | — | — | — | 9 | 9½ | 10 | 10½ | 11½ | 12 | " |
| Approx. Height | 28 | 31 | 34 | 38 | 41 | 44 | 47 | 50 | 52 | " |
| Sizes | ½ | 1 | 2 | 3 | 4 | 5 | 6 | 7 | 8 | |

| | | | | | | | | | | |
|--|---|---|---|---|---|---|---|---|---|----|
| A Top | | | | | | | | | | |
| 60"*** | ¾ | ¾ | ¾ | ¾ | ¾ | ¾ | ¾ | ¾ | ¾ | Yd |
| Contrast Sleeves and Lower Band | | | | | | | | | | |
| 45" or 60"*** | ¾ | ¾ | ¾ | ¾ | ¾ | ¾ | ¾ | ¾ | ¾ | Yd |

| | | | | | | | | | | |
|--|---|---|---|---|---|---|---|---|---|----|
| B Top | | | | | | | | | | |
| 60"*** | ¾ | ¾ | ¾ | ¾ | ¾ | ¾ | ¾ | ¾ | ¾ | Yd |
| Contrast Pocket, Sleeves and Lower Band | | | | | | | | | | |
| 45" or 60"*** | ¾ | ¾ | ¾ | ¾ | ¾ | ¾ | ¾ | ¾ | ¾ | Yd |

| | | | | | | | | | | |
|------------------|---|---|---|----|----|----|----|----|----|----|
| C,D Pants | | | | | | | | | | |
| 45"*** | 1 | 1 | 1 | 1½ | 1½ | 1½ | 1¾ | 1½ | 1½ | Yd |
| 60"*** | ¾ | ¾ | ¾ | ¾ | 1 | 1 | 1 | 1½ | 1½ | " |

| | | | | | | | | | | |
|-------------------------|---|---|---|---|---|---|---|---|---|----|
| C Contrast Front | | | | | | | | | | |
| 45" or 60"*** | ¾ | ¾ | ¾ | ¾ | ¾ | ¾ | 1 | 1 | 1 | Yd |

E Hat- ½ yd. of 60"***

Pom-Pom- ¾ yd. of 60"***

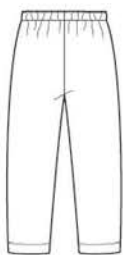
FINISHED GARMENT MEASUREMENTS (Includes Design and Wearing EASE)

| | | | | | | | | | | |
|--|-----|-----|-----|-----|-----|-----|-----|-----|-----|----|
| A,B Bust/Chest | — | — | — | — | 29 | 30 | 31 | 32 | 33 | In |
| C,D Hip | — | — | — | — | 27½ | 28½ | 29½ | 30½ | 31½ | " |
| Finished back length from base of neck: | | | | | | | | | | |
| A,B | 14½ | 15 | 15½ | 16 | 16½ | 17 | 17½ | 18 | 18½ | In |
| C,D Side Length | 18 | 19½ | 21 | 22½ | 24½ | 26 | 27½ | 29 | 30½ | " |
| C,D Leg Width | 9½ | 9¾ | 10 | 10¼ | 10½ | 10¾ | 11 | 11¼ | 11½ | " |

*without nap **with nap ***with or without nap



A,B



C,D



E

PETITS ENFANTS ET JEUNES: PANTALON ET HAUT ET CHAPEAU EN JERSEY

Tissus: **A,B Haut et E Chapeau** pour les jerseys extensibles seulement: Jersey Ponte, Molléton pour Sweatshirt. Voyez la Règle-Pour-Choisir-Un-Jersey®. Ces modèles conviennent pour la machine Overlock/Surjeteuse. **A,B Manches et Bande Inférieure, B Poche et C Devant** en Flanelle. **C,D Pantalon** en Velours Côtelé, Denim, Twill. **E Pompon de Chapeau** en Fourrures/ Fourrures Synthétiques. Prévoyez davantage de tissu pour raccorder les écossais, rayures ou motifs unidirectionnels.

Mercerie: Fil. **A,B:** 0.70m de cordon de 6mm de large. **C,D:** 0.80m d'élastique de 2cm de large
E: 16 grammes de rembourrage de polyester.

NIÑOS PEQUEÑOS Y NIÑOS: PANTALÓN Y BLUSA Y GORRO EN MALLAS

Telas: **A,B Blusa y E Gorro** para las mallas estirables solamente: Mallas Ponte, Muletón para Sudaderas. Veá la Regla-Para-Escoger-las-Mallas®. Estos modelos convienen para la máquina Overlock/Sobrehiladora. **A,B Mangas y Banda Inferior, B Bolsillo y C Frente** en Franela. **C,D Pantalón** en Terciopelo de Cordoncillos, Dril, Twill. **E Pompón de Gorro** en Pieles/Pielés Sintéticas. Se necesita tela adicional para casar cuadros, rayas o telas estampadas en una dirección.

Mercería: Hilo. **A,B:** 0.70m de cordoncillo de 6mm de ancho. **C,D:** 0.80m de elástico de 2cm de ancho. **E:** 16 gramos de fibras de poliéster.

MESURES NORMALISÉES/MEDIDAS DEL CUERPO

| | | | | | | | | | | |
|---|----|----|----|----|-----|------|-----|------|-----|----|
| Poitrine/Pecho | 48 | 51 | 53 | 56 | 58 | 61 | 64 | 66 | 69 | cm |
| Taille/Cintura | 48 | 50 | 51 | 52 | 53 | 55 | 56 | 58 | 60 | " |
| Dos (Encolure á taille)/Espalda (Escote a cintura) | — | — | — | 23 | 24 | 25.5 | 27 | 29.5 | 31 | cm |
| Taille approx. | 71 | 79 | 87 | 97 | 104 | 112 | 119 | 127 | 132 | cm |
| Tailles/Tallas | ½ | 1 | 2 | 3 | 4 | 5 | 6 | 7 | 8 | |

| | | | | | | | | | | |
|--|------|------|------|------|------|------|------|------|------|---|
| A Haut/A Blusa | | | | | | | | | | |
| 150cm** | 0.60 | 0.60 | 0.60 | 0.60 | 0.60 | 0.60 | 0.60 | 0.60 | 0.80 | m |
| Manches et Bande Inférieure Contrastantes/Mangas y Banda Inferior Contrastantes | | | | | | | | | | |
| 115cm ou/o 150cm** | 0.50 | 0.50 | 0.50 | 0.50 | 0.50 | 0.60 | 0.70 | 0.80 | 0.80 | m |

| | | | | | | | | | | |
|---|------|------|------|------|------|------|------|------|------|---|
| B Haut/B Blusa | | | | | | | | | | |
| 150cm** | 0.50 | 0.50 | 0.60 | 0.60 | 0.60 | 0.60 | 0.60 | 0.60 | 0.80 | m |
| Poche, Manches et Bande Inférieure Contrastantes | | | | | | | | | | |
| 115cm ou/o 150cm** | 0.70 | 0.70 | 0.70 | 0.70 | 0.70 | 0.70 | 0.70 | 0.80 | 0.80 | m |

| | | | | | | | | | | |
|----------------------------------|------|------|------|------|------|------|------|------|------|---|
| C,D Pantalon/C,D Pantalón | | | | | | | | | | |
| 115cm** | 0.90 | 0.90 | 0.90 | 1.00 | 1.00 | 1.10 | 1.20 | 1.40 | 1.50 | m |
| 150cm** | 0.60 | 0.70 | 0.70 | 0.80 | 0.90 | 0.90 | 1.00 | 1.00 | 1.00 | " |

| | | | | | | | | | | |
|---|------|------|------|------|------|------|------|------|------|---|
| C Devant Contrastant/C Frente Contrastante | | | | | | | | | | |
| 115cm ou/o 150cm** | 0.60 | 0.70 | 0.70 | 0.70 | 0.80 | 0.80 | 0.90 | 0.90 | 0.90 | m |

E Chapeau/E Gorro- 0.50m de 150cm**

Pompon/Pompón- 0.30m de 150cm**

*sans sens **avec sens ***avec ou sans sens

*sin pelusa **con pelusa ***sin o con pelusa