

# S9006

20 PIECES/PIEZAS

## MISSES' COSTUMES

**Fabrics:** Cotton Types. **B** also in Sateen, Satin. **B Contrast** in Novelty Sheer. **C** also in Lightweight Twill. **C Corset and Belts and Straps** in Imitation Leather, Leather-Like Fabrics. Extra fabric needed to match plaids, stripes or one-way design fabrics.

**Notions:** Thread, one 24" invisible zipper. **A,C:** Two ½" buttons. **B:** Five ½" buttons. **C:** Eight hooks for cape, one pkg. of ½" wide single fold bias tape, ¼ yd. of ¼" wide elastic, one 1 ½" x 1 ½" belt buckle, three 1 ¼" x 1 ¾" belt buckles, ¼ yd. of ¾" wide hook and loop tape.

### BODY MEASUREMENTS (For Sizing Help Visit [www.simplicity.com/sizehelp](http://www.simplicity.com/sizehelp))

<b>Bust</b>	30½	31½	32½	34	36	38	40	42	44	In
<b>Waist</b>	23	24	25	26½	28	30	32	34	37	"
<b>Hip-9" below waist</b>	32½	33½	34½	36	38	40	42	44	46	"
<b>Back-neck to waist</b>	15½	15¾	16	16¼	16½	16¾	17	17¼	17½	"
<b>Sizes</b>	6	8	10	12	14	16	18	20	22	
<b>European</b>	32	34	36	38	40	42	44	46	48	

<b>A Dress</b>										Yd
45***	2¼	2¾	2¾	2¾	2¾	3¼	3¼	3¼	3¾	"
60***	2¼	2¼	2¾	2¾	2¾	2¾	2¾	2¾	2½	"

**Collar and Sleeve Bands-** ¾ yd. of 45" to 60\*\*\*

**Interfacing-** ¾ yd. of 20" to 25" lightweight fusible, such as Pellon®

<b>B Dress</b>										Yd
45***	2¾	2¾	2¾	3	3¼	3¾	3½	3¾	3¾	"
60***	2¾	2¾	2¾	2¾	2½	2½	2½	2¾	2¾	"

### Sleeves and Overlay

45***	1¾	1¾	1¾	1¾	2¼	2¼	2¼	2½	2½	Yd
60***	1¾	1¾	1¾	1¾	1¾	1¾	1¾	1¾	1¾	"

**Interfacing-** 1¾ yd. of 20" to 25" lightweight fusible, such as Pellon®

<b>C Dress</b>										Yd
<b>Bodice, Collar and Sleeves</b>										
45***	1¾	1¾	1¾	1¾	2¾	2¾	2½	2½	2½	"
60***	1¼	1¾	1¾	1½	1½	1½	1½	1¾	1¾	"

### Skirt, Hood and Cape

45***	3	3¾	3¾	3¾	3¾	3¾	3½	3¾	3¾	Yd
60***	2½	2¾	2¾	2¾	2¾	2¾	2¾	2¾	2¾	"

**Cape Collar-** ½ yd. of 45" to 60\*\*\*

<b>Cape, Hood and Collar Lining</b>										Yd
45**	1½	1½	1¾	1¾	2	2	2	2	2	"

**Corset, Belt and Straps-** 1¾ yd. of 45" to 60\*\*\*

**Felt-** 1¾ yd. of 72" wide

**Paper Backed Fusing Web-** 2¾ yd. of 15" to 17" wide

**Interfacing-** ¾ yd. of 20" to 25" lightweight fusible, such as Pellon®

**Trims:** Satin Ribbon- 2¾ yd. of 1½" wide; Grosgrain Ribbon- 2¾ yd. of ¾" wide

### FINISHED GARMENT MEASUREMENTS (Includes Design and Wearing EASE)

<b>Bust</b>	34	35	36	37½	39½	41½	43½	45½	47½	In
<b>Finished back length from base of neck:</b>										
<b>A,B,C Dress</b>	35½	35¾	36	36¼	36½	36¾	37	37¼	37½	In
<b>C Cape</b>	36	36¼	36½	36¾	37	37¼	37½	37¾	38	"
<b>A,B,C Width</b>	103	104	105	106½	108½	110½	112½	114½	116½	"

\*without nap \*\*with nap \*\*\*with or without nap

## JEUNE FEMME: COSTUMES

**Tissus:** Cotonnades. **B** aussi en Satinette, Satin. **B Contrast** en Tissu transparent Fantaisie. **C** aussi en Twill Légers. **C Corset et Ceintures et Bretelles** en Cuir Synthétique, Tissus Simili-Cuir. Prévoyez davantage de tissu pour raccorder les écosais, rayures ou motifs unidirectionnels.

**Mercurie:** Fil, une glissière invisible de 60cm. **A,C:** Deux boutons de 1.3cm. **B:** Cinq boutons de 1.3cm. **C:** Huit agrafes pour cape, un paquet de ruban de biais simple de 1.3cm de large, 0.80m d'élastique de 6mm de large, un ceinture 3.5cm x 4cm de large, trois ceinture boucles 3.2cm x 3.5cm de large, 0.30m de fermeture agrippante de 2cm de large.

### MESURES NORMALISÉES

<b>Poitrine</b>	78	80	83	87	92	97	102	107	112	cm
<b>Taille</b>	58	61	64	67	71	76	81	87	94	"

### Haches (23cm au-dessous de la taille)

<b>Dos (encolure à taille)</b>	83	85	88	92	97	102	107	112	117	cm
	39.5	40	40.5	41.5	42	42.5	43	44	44	cm

<b>Tailles Françaises</b>	6	8	10	12	14	16	18	20	22	
	34	36	38	40	42	44	46	48	50	

<b>A Robe</b>										m
115cm**	2.10	2.10	2.10	2.20	2.50	2.80	3.00	3.10	3.30	"
150cm**	2.10	2.10	2.10	2.10	2.20	2.20	2.20	2.20	2.30	"

**Col et Bandes de Manches-** 0.50m de 115cm à 150cm\*\*

**Entoilage-** 0.60m de 51cm à 64cm, léger, thermocollant tel que Pellon®

<b>B Robe</b>										m
115cm**	2.60	2.60	2.60	2.70	3.00	3.10	3.20	3.30	3.40	"
150cm**	2.10	2.10	2.20	2.20	2.20	2.30	2.30	2.60	2.60	"

### Manches et Dessus

115cm**	1.70	1.70	1.70	1.70	1.90	2.10	2.20	2.30	2.40	m
150cm**	1.70	1.70	1.70	1.70	1.70	1.70	1.70	1.70	1.80	"

**Entoilage-** 1.60m de 51cm à 64cm, léger, thermocollant tel que Pellon®

<b>C Robe</b>										m
<b>Corsage, Col et Manches</b>										
115cm**	1.50	1.50	1.70	1.80	2.00	2.10	2.20	2.30	2.30	"
150cm**	1.20	1.20	1.30	1.30	1.30	1.30	1.40	1.60	1.60	"

### Jupe, Capuche et Cape

115cm**	2.80	2.80	2.80	2.90	3.00	3.10	3.20	3.30	3.40	m
150cm**	2.40	2.40	2.40	2.40	2.40	2.40	2.50	2.50	2.50	"

**Col de Cape-** 0.40m de 115cm à 150cm\*\*

<b>Cape, Capuche et Doublure de Col</b>										m
115cm*	1.40	1.40	1.70	1.80	1.80	1.80	1.80	1.80	1.80	"

**Corset, Ceinture et Bretelles-** 1.20m de 115cm à 150cm\*\*

**Feutrine-** 1.20m de 183cm de large

**Matière Thermocollante avec Support de Papier-** 1.90m de 38cm à 43cm de large

**Entoilage-** 0.60m de 51cm à 64cm, léger, thermocollant tel que Pellon®

**Garnitures:** Ruban de Satin- 2.00m de 3.8cm de large; Ruban de Grosgrain- 2.00m de 1.5cm de large

### MESURES DES VÊTEMENTS FINI

<b>Poitrine</b>	86.5	89	91.5	95	100.5	106	111	116	121	cm
-----------------	------	----	------	----	-------	-----	-----	-----	-----	----

### Longueur finie du depuis la base du cou:

<b>A,B,C Robe</b>	90	91	91.5	92	92.5	93	94	94.5	95	cm
<b>C Cape</b>	91.5	92	92.5	93	94	94.5	95	96	96.5	"
<b>A,B,C Largeur</b>	262	264	267	270	276	281	286	291	296	"

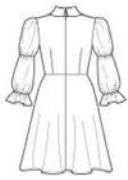
\*sans sens \*\*avec sens \*\*\*avec ou sans sens



A B



B



C



C



C C