

S9040

14 PIECES/PIEZAS

MISSES' DRESSES WITH NECKLINE, SLEEVE AND LENGTH VARIATIONS

Fabrics: Chambray, Cotton Types, Gingham, Linen Types, Poplin, Sateen, Shirtings. Extra fabric needed to match plaids, stripes or one-way design fabrics.

Notions: Thread, one pkg. of ½" wide single fold bias tape, 1¼ yds. of ¾" wide elastic, self-covered 2" wide belt buckle. **A:** Three ⅝" buttons. **B,C:** Four ⅝" buttons.

Sizes	6	8	10	12	14	16	18	20	22
European	32	34	36	38	40	42	44	46	48

A Dress

45"***	4¾	4¾	4¾	4⅞	5¼	5⅜	5¾	5⅞	6	Yd
60"***	3½	3⅝	3⅝	4	4⅛	4¼	4¼	4⅜	4¾	"

Interfacing- ⅜ yd. of 20" to 25" lightweight fusible, such as Pellon®

B Dress

45"***	5	5	5	5⅜	5⅝	5¾	6	6	6⅜	Yd
60"***	3¾	3⅞	3⅞	4⅛	4¼	4⅜	4⅝	4¾	4¾	"

C Dress

45"***	4¼	4⅜	4⅜	4½	4½	4¾	4⅞	4⅞	4⅞	Yd
60"***	2⅞	2⅞	3	3	3⅛	3¼	3⅜	3½	3⅝	"

FINISHED GARMENT MEASUREMENTS

A,B,C Bust	34½	35½	36½	38	40	42	44	46	48	In
Finished back length from base of neck:										
A,B Length	44½	44¾	45	45¼	45½	45¾	46	46¼	46½	In
C Length	37½	37¾	38	38¼	38½	38¾	39	39¼	39½	"

JEUNE FEMME: ROBES AVEC VARIATIONS DE ENCOLURE, MANCHES ET LONGUEURS

SEÑORITAS: VESTIDOS CON VARIACIONES DE ESCOTE, MANGAS Y DE LARGOS

Tailles/ Tallas	6	8	10	12	14	16	18	20	22
Françaises	34	36	38	40	42	44	46	48	50
Europeas	32	34	36	38	40	42	44	46	48

A Robe/ A Vestido

115cm**	4.30	4.30	4.40	4.40	4.80	4.90	5.30	5.40	5.40	m
150cm**	3.20	3.30	3.30	3.60	3.80	3.80	3.90	4.00	4.00	"

Entoilage- 0.40m de 51cm à 64cm, léger, thermocollant tel que Pellon®

Entretela- 0.40m de 51cm a 64cm, ligera, adhesiva como Pellon®

B Robe/ B Vestido

115cm**	4.60	4.60	4.60	4.90	5.20	5.30	5.40	5.50	5.80	m
150cm**	3.40	3.50	3.50	3.80	3.90	4.00	4.20	4.30	4.30	"

C Robe/ C Vestido

115cm**	3.90	4.00	4.00	4.10	4.20	4.40	4.40	4.40	4.50	m
150cm**	2.60	2.60	2.70	2.70	2.80	2.90	3.00	3.20	3.40	"

*without nap **with nap ***with or without nap
*sin pelusa **con pelusa ***sin o con pelusa

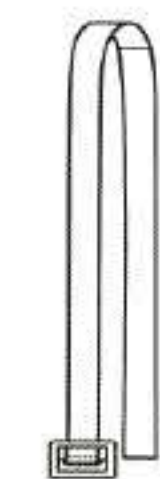
*sans sens **avec sens ***avec ou sans sens



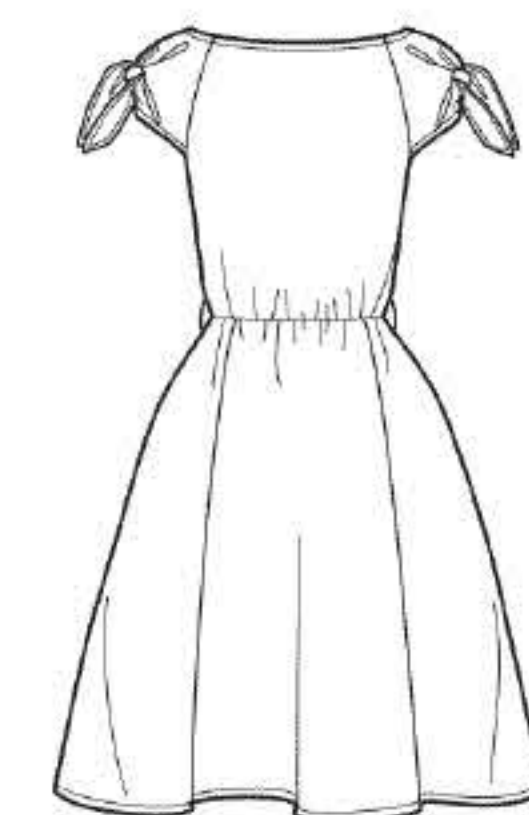
A



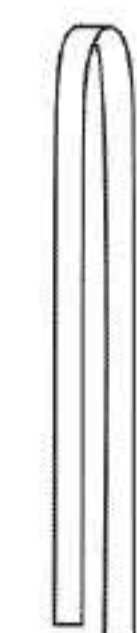
B



A,B



C



C

Instrucciones de costura en Español en el Interior del Patrón.