

S9042

13 PIECES/PIEZAS

MISSES' WRAP DRESSES WITH LENGTH AND COLLAR VARIATIONS

Fabrics: Chambray, Cotton, Gauze, Gingham, Linen. Extra fabric needed to match plaids, stripes or one-way design fabrics.

Notions: Thread. **A,B:** O-Ring buckle.

Sizes	6	8	10	12	14	16	18	20	22	24	
European	32	34	36	38	40	42	44	46	48	50	
A Dress											
45 ^{***}	3 ³ / ₄	3 ⁷ / ₈	4 ¹ / ₈	4 ¹ / ₄	4 ³ / ₈	4 ³ / ₈	4 ³ / ₈	4 ¹ / ₂	4 ¹ / ₂	4 ¹ / ₂	Yd
60 ^{***}	2 ⁷ / ₈	2 ⁷ / ₈	3	3	3	3	3	3	3	3 ¹ / ₈	"

A,B Interfacing- 1¹/₈ yds. of 20" to 25" lightweight fusible, such as Pellon®

B Dress											
45 ^{***}	4 ³ / ₄	4 ³ / ₄	4 ³ / ₄	4 ⁷ / ₈	4 ⁷ / ₈	5 ³ / ₈	5 ³ / ₈	5 ⁵ / ₈	5 ⁵ / ₈	5 ⁵ / ₈	Yd
60 ^{***}	3 ³ / ₈	3 ³ / ₈	3 ³ / ₄	3 ³ / ₄	3 ⁷ / ₈	3 ⁷ / ₈	3 ⁷ / ₈	4	4	4	"

C Dress											
45 ^{***}	3 ¹ / ₈	3 ¹ / ₈	3 ¹ / ₈	3 ¹ / ₄	3 ¹ / ₄	3 ¹ / ₂	3 ⁵ / ₈	3 ³ / ₄	3 ⁷ / ₈	4	Yd
60 ^{***}	2 ¹ / ₄	2 ¹ / ₄	2 ¹ / ₂	2 ¹ / ₂	2 ¹ / ₂	2 ⁷ / ₈	2 ⁷ / ₈	2 ⁷ / ₈	3	3	"

Interfacing- ⁷/₈ yd. of 20" to 25" lightweight fusible, such as Pellon®

FINISHED GARMENT MEASUREMENTS

A,B,C Bust	34	35	36	37 ¹ / ₂	39 ¹ / ₂	41 ¹ / ₂	43 ¹ / ₂	45 ¹ / ₂	47 ¹ / ₂	49 ¹ / ₂	In
Finished back length from base of neck:											
A,B Length	47 ¹ / ₂	47 ³ / ₄	48	48 ¹ / ₄	48 ¹ / ₂	48 ³ / ₄	49	49 ¹ / ₄	49 ¹ / ₂	49 ³ / ₄	In
C Length	36 ¹ / ₂	36 ³ / ₄	37	37 ¹ / ₄	37 ¹ / ₂	37 ³ / ₄	38	38 ¹ / ₄	38 ¹ / ₂	38 ³ / ₄	"
A,B Width	58	59	60	61 ¹ / ₂	63 ¹ / ₂	65 ¹ / ₂	67 ¹ / ₂	69 ¹ / ₂	71 ¹ / ₂	73 ¹ / ₂	"
C Width	50	51	52	53 ¹ / ₂	55 ¹ / ₂	57 ¹ / ₂	59 ¹ / ₂	61 ¹ / ₂	63 ¹ / ₂	65 ¹ / ₂	"

JEUNE FEMME: ROBES DRAPÉES AVEC VARIATIONS DE LONGUEUR ET DE COL

SEÑORITAS: VESTIDOS DRAPEADOS CON VARIACIONES DE LARGOS Y DE CUELLO

Tailles/ Tallas	6	8	10	12	14	16	18	20	22	24
Françaises	34	36	38	40	42	44	46	48	50	52
Europeas	32	34	36	38	40	42	44	46	48	50

A Robe/ A Vestido

115cm ^{**}	3.40	3.50	3.70	3.90	4.00	4.00	4.00	4.10	4.10	4.10	m
150cm ^{**}	2.60	2.60	2.70	2.70	2.70	2.80	2.80	2.80	2.80	2.80	"

A,B Entoilage- 1.00m de 51cm à 64cm, léger, thermocollant tel que Pellon®

A,B Entretela- 1.00m de 51cm a 64cm, ligera, adhesiva como Pellon®

B Robe/ B Vestido

115cm ^{**}	4.30	4.40	4.40	4.40	4.40	4.90	4.90	5.10	5.10	5.20	m
150cm ^{**}	3.10	3.10	3.40	3.40	3.50	3.50	3.60	3.60	3.70	3.70	"

C Robe/ C Vestido

115cm ^{**}	2.80	2.90	2.90	2.90	2.90	3.20	3.30	3.40	3.50	3.60	m
150cm ^{**}	2.10	2.10	2.30	2.30	2.30	2.60	2.60	2.70	2.70	2.70	"

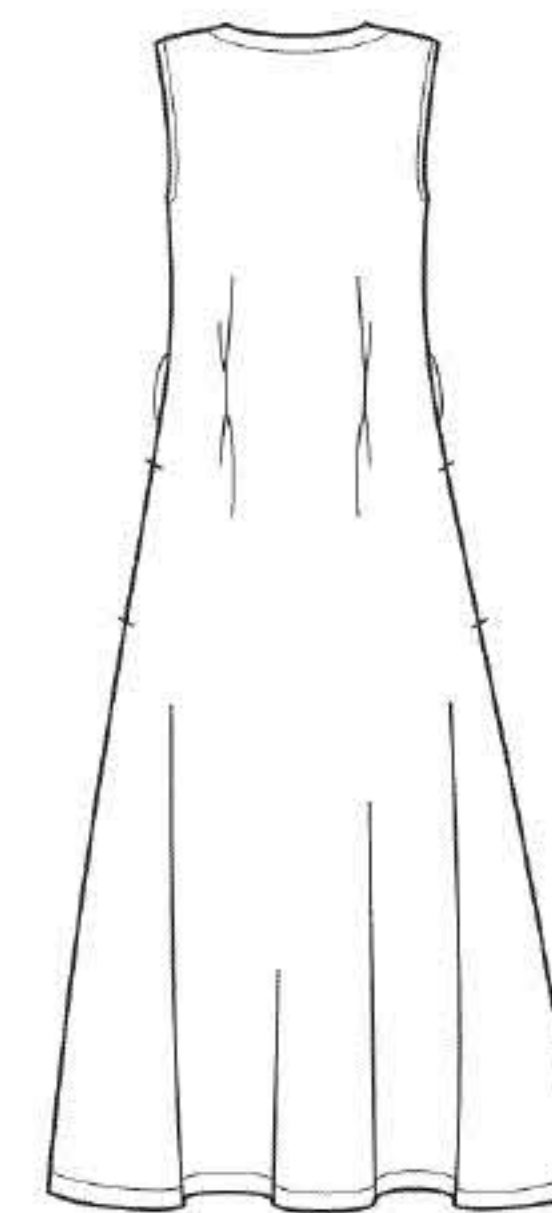
Entoilage- 0.80m de 51cm à 64cm, léger, thermocollant tel que Pellon®

Entretela- 0.80m de 51cm a 64cm, ligera, adhesiva como Pellon®

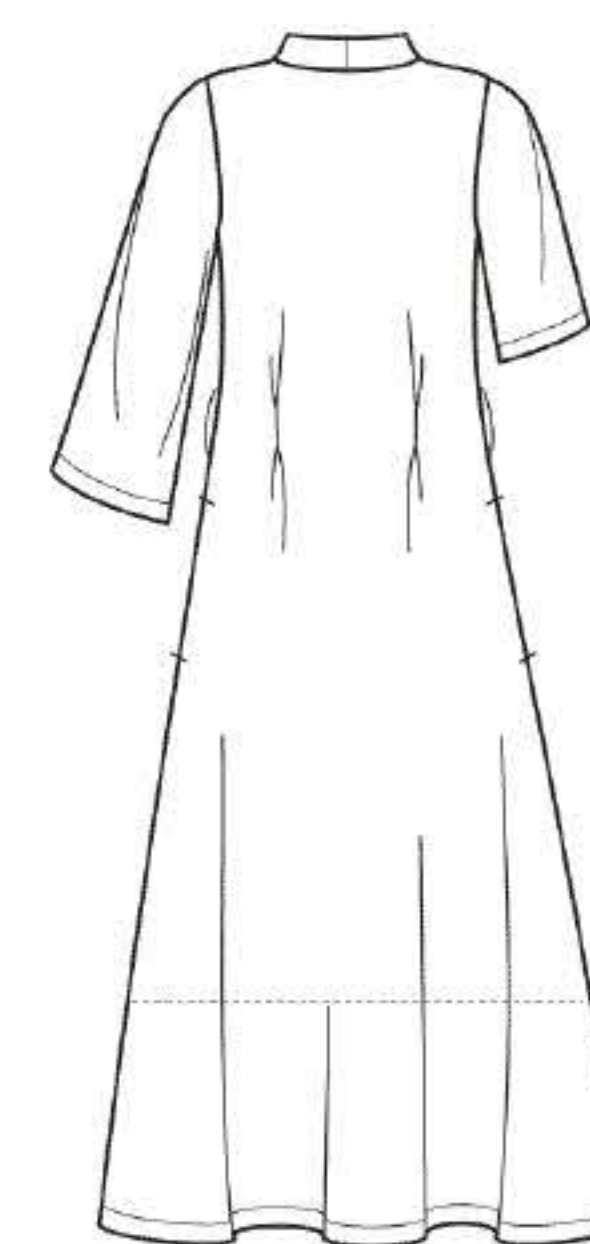
*without nap **with nap ***with or without nap
*sin pelusa **con pelusa ***sin o con pelusa

*sans sens **avec sens ***avec ou sans sens

Instrucciones de costura en Español en el Interior del Patrón.



A



B



AB



C