

# S9051

10 PIECES/PIEZAS

## MISSES' TOPS WITH SLEEVE AND LENGTH VARIATIONS; SELF TIE BELT OR SCARF; PANTS WITH OPTIONAL SIDE SLITS

**Fabrics:** Cotton Types such as: Lightweight Poplin, Lightweight Sateen, Soft Lightweight Cotton Types, Silky Types. Extra fabric needed to match plaids, stripes or one-way design fabrics.

**Notions:** Thread. **C:** 1¼ yds. of 1" wide elastic.

Sizes	6	8	10	12	14	16	18	20	22	
<b>European</b>	32	34	36	38	40	42	44	46	48	
<b>A Top</b>										
45"***	1⅞	2	2⅞	2⅞	2⅞	2¼	2¼	2¼	2¼	Yd
60"***	1⅝	1⅝	1⅝	1⅝	1⅞	1⅞	1⅞	1⅞	2	"
<b>B Top</b>										
45"***	1⅞	2	2⅞	2⅞	2¼	2¼	2¼	2⅜	2⅜	Yd
60"***	1½	1⅝	1¾	1¾	1¾	1¾	2	2	2	"
<b>C Pant</b>										
45"***	2¼	2½	2½	2½	2⅝	2¾	2¾	2⅞	2⅞	Yd
60"***	1⅝	1⅝	1⅝	1⅝	2⅞	2¼	2¼	2¼	2⅝	"

### FINISHED GARMENT MEASUREMENTS

<b>A,B Bust</b>	35½	36½	37½	39	41	43	45	47	49	In
<b>C Hip</b>	36	37	38	39½	41	43	45	47	50	"

### Finished back length from base of neck:

<b>A Length</b>	28	28¼	28½	28¾	29	29¼	29½	29¾	30	In
<b>B Length</b>	22½	22¾	23	23¼	23½	23¾	24	24¼	24½	"
<b>B Width</b>	43	44	45	46½	48½	50½	52½	54½	56½	"
<b>C Side Length</b>	40½	40¾	41	41¼	41½	41¾	42	42¼	42½	"
<b>C Leg Width</b>	19	20	21	22½	24	26	28	30	33	"

## JEUNE FEMME: HAUTS AVEC VARIATIONS DE MANCHES ET LONGUEURS; CEINTURE À NOUER OU ÉCHARPE; PANTALON AVEC FENTES LATÉRALES OPTIONAL SEÑORITAS: BLUSAS CON VARIACIONES DE MANGAS Y LARGOS; CINTURÓN DE LAZO O BUFANDA; PANTALÓN CON ABERTURA LATERAL OPCIONAL

Tailles/ Tallas	6	8	10	12	14	16	18	20	22
<b>Françaises</b>	34	36	38	40	42	44	46	48	50
<b>Europeas</b>	32	34	36	38	40	42	44	46	48

### A Haut/ A Blusa

115cm**	1.70	1.90	1.90	1.90	2.00	2.00	2.00	2.10	2.10	m
150cm**	1.40	1.50	1.50	1.50	1.70	1.70	1.70	1.70	1.80	"

### B Haut/ B Blusa

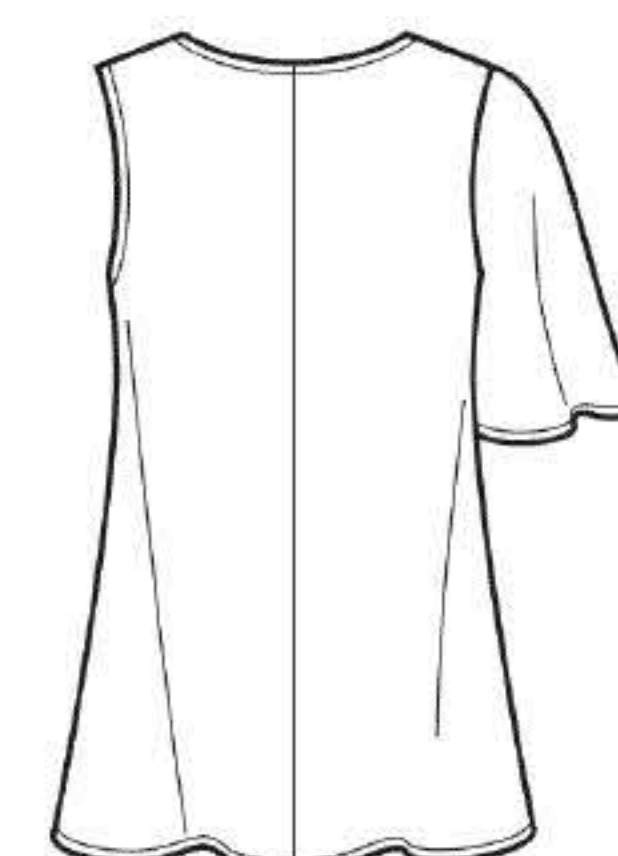
115cm**	1.70	1.80	1.90	2.00	2.00	2.10	2.10	2.10	2.20	m
150cm**	1.40	1.50	1.50	1.60	1.60	1.60	1.80	1.80	1.90	"

### C Pantalon/ C Pantalón

115cm**	2.10	2.30	2.30	2.30	2.40	2.50	2.50	2.60	2.60	m
150cm**	1.50	1.50	1.50	1.50	2.00	2.00	2.10	2.10	2.30	"

\*without nap \*\*with nap \*\*\*with or without nap  
\*sin pelusa \*\*con pelusa \*\*\*sin o con pelusa

\*sans sens \*\*avec sens \*\*\*avec ou sans sens



A B



A,B



C

**Instrucciones de costura en Español en el Interior del Patrón.**