

S9056 10 PIECES/PIEZAS

CHILDREN'S AND TEEN BOYS' CLASSIC, RELAXED AND SLIM FIT SHIRTS

Fabrics: Broadcloth, Chambray, Cotton, Cotton Blends, Linen, Linen Blends, Stretch Woven Fabrics. Extra fabric needed to match plaids, stripes or one-way design fabrics.

Notions: Thread, nine $\frac{3}{8}$ " buttons for sizes 3 - 6, ten $\frac{3}{8}$ " buttons for sizes 8 - 16.

Sizes 3 4 5 6 8 10 12 14 16

A,B,C Interfacing- 20" to 25" lightweight fusible, such as Pellon®- $\frac{5}{8}$ yd. for sizes 3 - 6, $\frac{7}{8}$ yd. for sizes 8 - 16.

A Shirt- Classic Fit

45"***	1	1	1 $\frac{1}{8}$	1 $\frac{1}{8}$	1 $\frac{1}{4}$	1 $\frac{1}{2}$	1 $\frac{5}{8}$	1 $\frac{5}{8}$	1 $\frac{7}{8}$	Yd
60"***	1	1	1	1	1 $\frac{1}{8}$	1 $\frac{1}{4}$	1 $\frac{1}{4}$	1 $\frac{3}{8}$	1 $\frac{3}{8}$	"

B Shirt- Slim Fit

45"***	1	1	1 $\frac{1}{8}$	1 $\frac{1}{8}$	1 $\frac{1}{4}$	1 $\frac{1}{2}$	1 $\frac{5}{8}$	1 $\frac{5}{8}$	1 $\frac{7}{8}$	Yd
60"***	1	1	1	1	1 $\frac{1}{8}$	1 $\frac{1}{4}$	1 $\frac{1}{4}$	1 $\frac{3}{8}$	1 $\frac{3}{8}$	"

C Shirt- Relaxed Fit

45"***	1 $\frac{1}{8}$	1 $\frac{1}{8}$	1 $\frac{1}{4}$	1 $\frac{1}{4}$	1 $\frac{1}{2}$	1 $\frac{1}{2}$	1 $\frac{3}{4}$	1 $\frac{3}{4}$	1 $\frac{7}{8}$	Yd
60"***	1	1	1	1	1 $\frac{1}{8}$	1 $\frac{1}{4}$	1 $\frac{1}{4}$	1 $\frac{3}{8}$	1 $\frac{3}{8}$	"

FINISHED GARMENT MEASUREMENTS

A Chest	25 $\frac{1}{2}$	26 $\frac{1}{2}$	27 $\frac{1}{2}$	28 $\frac{1}{2}$	31	32 $\frac{1}{2}$	34	36	38	In
B Chest	24 $\frac{1}{2}$	25 $\frac{1}{2}$	26 $\frac{1}{2}$	27 $\frac{1}{2}$	30	31 $\frac{1}{2}$	33	35	37	"
C Chest	29	30	31	32	35	36 $\frac{1}{2}$	38	40	42	"

Finished back length from base of neck:

A,B,C	17	17 $\frac{1}{2}$	18	18 $\frac{1}{2}$	20 $\frac{3}{4}$	21 $\frac{1}{2}$	22 $\frac{1}{4}$	23	23 $\frac{3}{4}$	In
--------------	----	------------------	----	------------------	------------------	------------------	------------------	----	------------------	----

ENFANTS ET ADOLESCENTS: CHEMISES CLASSIQUES, DÉTENDUES ET AJUSTÉE

NIÑOS Y ADOLESCENTES: CAMISAS CLÁSICAS, RELAJADAS Y AJUSTADA

Tailles/ Tallas 3 4 5 6 8 10 12 14 16

A,B,C Entoilage- 51cm à 64cm, léger, thermocollant tel que Pellon®- 0.50m pour tailles 3 - 6, 0.80m pour tailles 8 - 16.

A,B,C Entretela- 51cm a 64cm, ligera, adhesiva como Pellon®- 0.50m para tallas 3 - 6, 0.80m para tallas 8 - 16.

A Chemise- Ajustement Classique/ A Camisa- Ajuste Clásico

115cm**	0.90	0.90	1.00	1.00	1.20	1.40	1.50	1.50	1.70	m
150cm**	0.90	0.90	0.90	0.90	1.10	1.10	1.20	1.20	1.30	"

B Chemise- Ajustée/ B Camisa- Ajustada

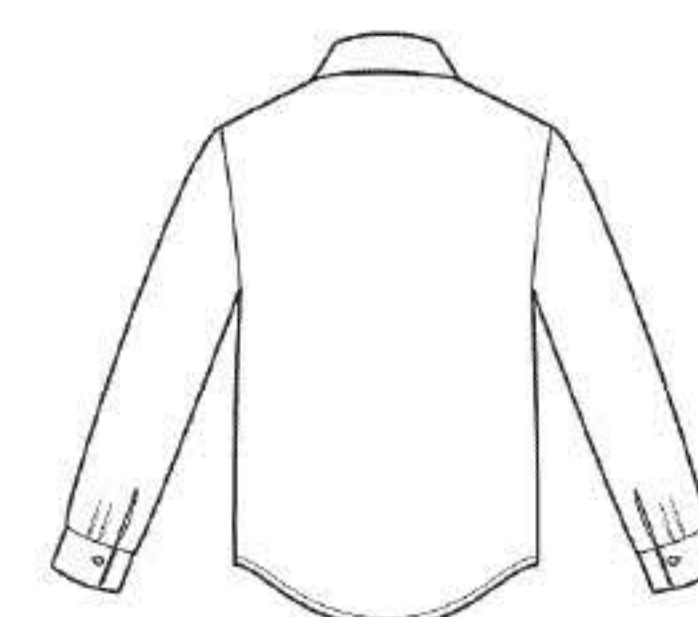
115cm**	0.90	0.90	1.00	1.00	1.20	1.40	1.50	1.50	1.70	m
150cm**	0.90	0.90	0.90	0.90	1.10	1.10	1.20	1.20	1.30	"

C Chemise- Ajustement Détendu/ C Camisa- Ajuste Relajado

115cm**	1.00	1.00	1.10	1.10	1.40	1.40	1.60	1.60	1.70	m
150cm**	0.90	0.90	0.90	0.90	1.10	1.10	1.20	1.20	1.30	"

*without nap **with nap ***with or without nap
*sin pelusa **con pelusa ***sin o con pelusa

*sans sens **avec sens ***avec ou sans sens



A



B



C

Instrucciones de costura en Español en el Interior del Patrón.