

S9085 18 PIECES

MISSES' COSTUME ROBE, TOPS, BOTTOMS AND ROMPER

Fabrics: Silk Charmeuse, China Silk, Lown, Voile, Batiste.

Notions: Thread. **A Robe:** 5¼ yds. of medium rick-rack or flexible trim.

B,C Top and Shorts: 1¼ yds. of ¾" wide elastic, two hook and bar closures.

D Romper: 1¼ yds. of ¼" wide elastic, six ½" buttons.

Sizes	6	8	10	12	14	16	18	20	22
European	32	34	36	38	40	42	44	46	48

A Robe

45"	2¼	2¼	2¼	2¾	2¾	3	3	3	3	Yd
60"	1¾	1¾	1¾	1¾	1¾	2½	2½	2½	2½	"

B Top and Shorts

45"	1⅝	1⅝	1¾	1⅞	2⅞	2⅞	2⅞	2¼	2¾	Yd
60"	1¼	1¼	1¼	1¾	1½	1½	1⅝	1¾	1¾	"

C Top and Shorts

45"	2	2⅞	2¼	2¾	2⅞	2⅞	3	3⅞	3¼	Yd
60"	1¾	1¾	1¾	1¾	2⅞	2⅞	2⅞	2¼	2¼	"

D Romper

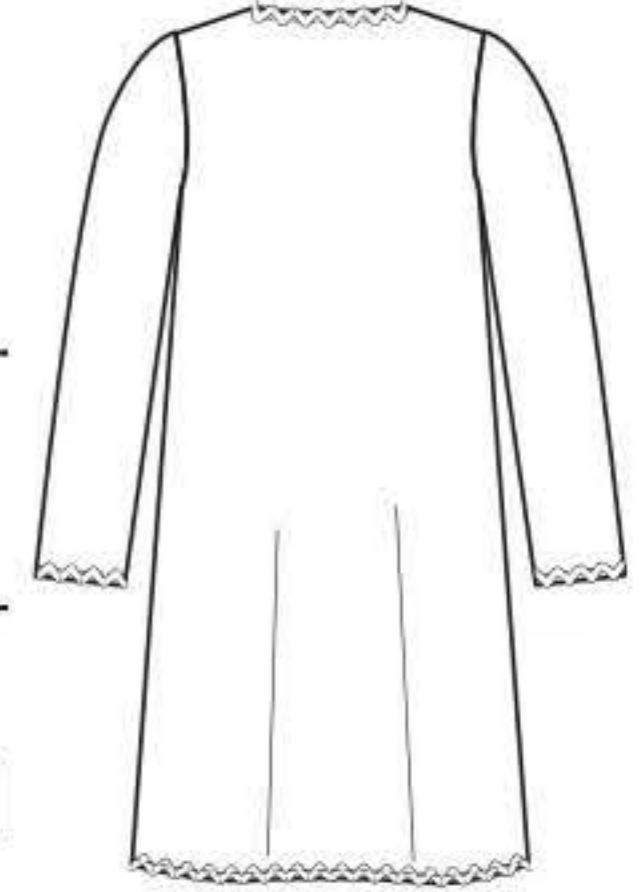
45"	1⅝	1¾	1¾	2	2⅞	2⅞	2¾	2¾	2¾	Yd
60"	1½	1½	1½	1½	1⅞	2	2	2	2	"

Interfacing- ¼ yd. of 20" to 25" lightweight sew-in, such as Pellon®

FINISHED GARMENT MEASUREMENTS

A Bust	36½	37½	38½	40	42	44	46	48	50	In
B,C,D Bust	32½	33½	34½	36	38	40	42	44	46	"
D Hip	34½	35½	36½	38	40	42	44	46	48	"
Finished back length from base of neck:										
A Robe	35½	35¾	36	36¼	36½	36¾	37	37¼	37½	In
B,C Shorts	15½	15¾	16	16¼	16½	16¾	17	17¼	17½	"
D Romper	31½	32	32½	33	33½	34	34½	35	35½	"
A Robe Width	53	54	55	56½	58½	60½	62½	64¼	66½	"
C Top Width	45	46	47	48½	50½	52½	54½	56½	58½	"
B,C Leg Width	24½	25	25½	26½	27½	28½	29½	30½	32½	"
D Romper Width	24	24½	25	26	27	28	29	30	32	"

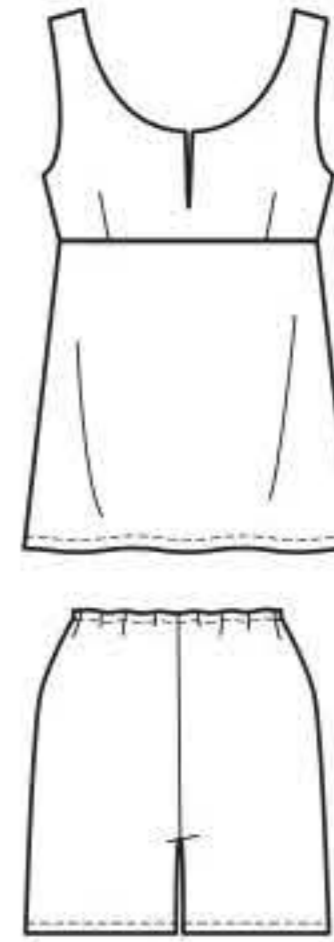
*without nap **with nap ***with or without nap



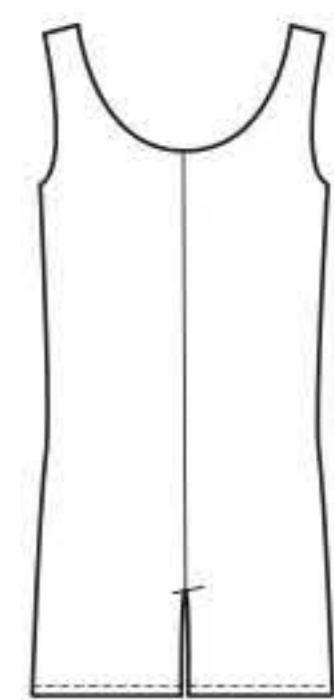
A



B



C



D



©2020 Simplicity® a CSS Industries, Inc. brand. Berwick, PA 18503. All rights reserved. Trademarks Reg. U.S. Pat. & TM Off. Marca Registrada. Sold for individual home use only and not for commercial or manufacturing purposes. www.simplicity.com Reserve à un usage personnel. Utilisation commerciale ou industrielle strictement interdite.

MADE IN U.S.A. FABRIQUE AUX ETATS-UNIS.

