

# S9105 10 PIECES/PIEZAS

## MISSES' VINTAGE DRESS WITH DETACHABLE COLLAR

**Fabrics:** Cotton Types such as Pique, Poplin, Sateen, Satin. Extra fabric needed to match plaids, stripes or one-way design fabrics.

**Notions:** Thread, one 14" invisible zipper, three ¾" buttons, one 1¼" wide buckle (for opt. belt). **B:** Five snaps (for detachable collar), one pkg. of ½" wide double fold bias tape, purchased belt (opt.)

<b>Sizes</b>	6	8	10	12	14	16	18	20	22	24
<b>European</b>	32	34	36	38	40	42	44	46	48	50

### A Dress and Belt

45***	4½	4½	4½	4½	4½	4½	4⅝	4⅝	4¾	4¾	Yd
60***	3	3	3	3	3⅛	3½	3⅝	3⅝	3⅝	3¾	"

**Interfacing-** 1⅝ yds. of 20" to 25" lightweight fusible, such as Pellon®

### B Dress and Belt

45***	4	4½	4½	4½	5¼	5⅜	5⅜	5½	5½	5⅝	Yd
60***	3⅞	3⅞	3⅞	3⅞	4	4	4	4	4½	4½	"

### Contrast Detachable Collar

45***	¾	¾	¾	¾	⅞	1	1	1	1	1	Yd
60***	⅝	⅝	⅝	⅝	⅝	⅝	¾	¾	¾	¾	"

**Interfacing (includes detachable collar)-** 2¼ yds. of 20" to 25" lightweight fusible, such as Pellon®

## FINISHED GARMENT MEASUREMENTS

<b>A,B Bust</b>	34½	35½	36½	38	40	42	44	46	48	50	In
<b>Finished back length from base of neck:</b>											
<b>A,B Length</b>	45	45¼	45½	45¾	46	46¼	46½	46¾	47	47¼	In
<b>A,B Width</b>	107	108	109	110½	112½	114½	116½	118½	120½	122½	"

## JEUNE FEMME: ROBE CLASSIQUE AVEC COL AMOVIBLE

## SEÑORITAS: VESTIDO CLÁSICO CON CUELLO DESMONTABLE

<b>Tailles/ Tallas</b>	6	8	10	12	14	16	18	20	22	24
<b>Françaises</b>	34	36	38	40	42	44	46	48	50	52
<b>Europeas</b>	32	34	36	38	40	42	44	46	48	50

### A Robe/ A Vestido

115cm**	3.70	3.80	3.80	4.10	4.10	4.20	4.20	4.20	4.30	4.40	m
150cm**	2.70	2.70	2.80	2.80	2.80	3.20	3.30	3.30	3.40	3.40	"

**Entoilage-** 1.50m de 51cm à 64cm, léger, thermocollant tel que Pellon®

**Entretela-** 1.50m de 51cm a 64cm, ligera, adhesiva como Pellon®

### B Robe/ B Vestido

115cm**	3.70	3.70	3.80	3.80	4.80	4.90	4.90	5.00	5.10	5.10	m
150cm**	3.50	3.50	3.50	3.60	3.60	3.60	3.70	3.70	3.70	3.80	"

### Col Amovible Contrastante/ Cuello Desmontable Contrastante

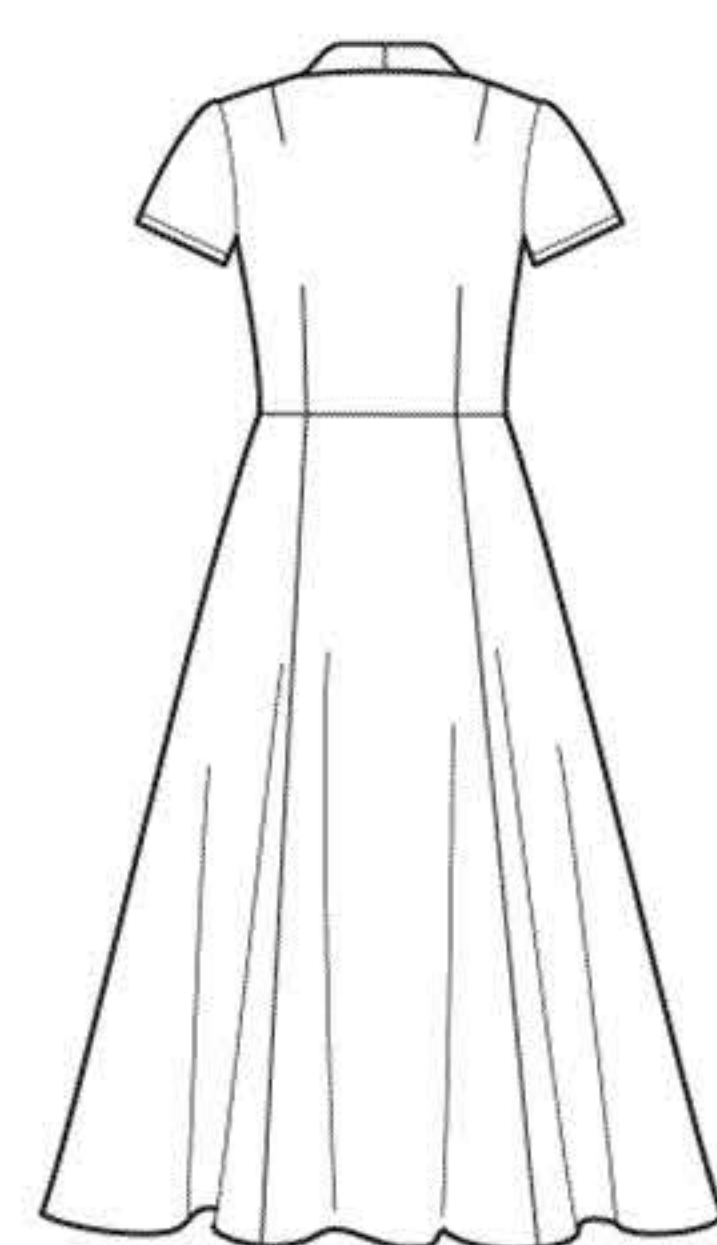
115cm**	0.70	0.70	0.70	0.70	0.80	0.90	0.90	0.90	0.90	1.00	m
150cm**	0.60	0.60	0.60	0.60	0.60	0.60	0.60	0.60	0.60	0.60	"

**Entoilage (comprend le col amovible)-** 2.10m de 51cm à 64cm, léger, thermocollant tel que Pellon®

**Entretela (incluye el cuello desmontable)-** 2.10m de 51cm a 64cm, ligera, adhesiva como Pellon®

\*without nap \*\*with nap \*\*\*with or without nap  
\*sin pelusa \*\*con pelusa \*\*\*sin o con pelusa

\*sans sens \*\*avec sens \*\*\*avec ou sans sens



A



A,B



B



B

Instrucciones de costura en Español en el Interior del Patrón.