

S9111

11 PIECES/PIEZAS

MISSES' FAUX WRAP PANTS, SKIRT AND SHORTS

Fabrics: Challis, Crepe, Linens, Poplin, Soft Cottons. Extra fabric needed to match plaids, stripes or one-way design fabrics.

Notions: Thread, one 7" zipper, one pkg. of ½" wide double fold bias tape.

B,C: One pair of ½" D-Rings.

Sizes	6	8	10	12	14	16	18	20	22	24
European	32	34	36	38	40	42	44	46	48	50

A,B,C Interfacing- ⅞ yd. of 20" to 25" lightweight fusible, such as Pellon®

A Faux Wrap Skirt

45"***	1⅝	1⅝	1⅝	1⅝	1¾	1¾	1¾	1¾	1¾	1⅞	Yd
60"***	1⅞	1¼	1⅝	1⅝	1⅝	1⅝	1⅝	1⅝	1⅝	1⅝	"

B Faux Wrap Shorts

45"***	1⅝	1⅝	1⅝	1½	1¾	1¾	1¾	1¾	1⅞	2	Yd
60"***	1⅞	1⅞	1¼	1¼	1¼	1¼	1¼	1¼	1⅝	1⅝	"

C Faux Wrap Pants

45"***	2½	2½	2½	2⅝	2¾	2⅞	3⅞	3¾	3⅞	4	Yd
60"***	2¼	2⅝	2½	2½	2½	2⅝	2⅝	2⅝	2⅝	2⅞	"

FINISHED GARMENT MEASUREMENTS

A,B,C Hip	35	36	37	38½	40½	42½	44½	46½	49½	51½	In
A Skirt Length	23	23	23	23	23	23	23	23	23	23	"
A Skirt Width	35	36	37	38½	40½	42½	44½	46½	49½	51½	"
B Shorts Side Length	15½	15¾	16	16¼	16½	16¾	17	17¼	17½	17¾	In
B Shorts Leg Width	19½	20½	21½	22½	23½	24½	25½	26½	27½	28½	In
C Pants Side Length	39½	39¾	40	40¼	40½	40¾	41	41¼	41½	41¾	In
C Pants Leg Width	18	19	20	21	22	23	24	25	26	28	In

JEUNE FEMME: PANTALON, JUPE ET SHORT DRAPÉES

SEÑORITAS: PANTALÓN, FALDA Y SHORT DRAPEADOS

Tailles	6	8	10	12	14	16	18	20	22	24
Françaises	34	36	38	40	42	44	46	48	50	52
European	32	34	36	38	40	42	44	46	48	50

A,B,C Entoilage- 0.80m de 51cm à 64cm léger thermocollant tel que Pellon®

A,B,C Entretela- 0.80m de 51cm a 64cm, ligera, adhesiva como Pellon®

A Jupe Drapée/ A Falda Drapeada

115cm**	1.50	1.50	1.50	1.50	1.60	1.60	1.60	1.60	1.60	1.80	m
150cm**	1.00	1.10	1.20	1.50	1.50	1.50	1.50	1.50	1.50	1.50	"

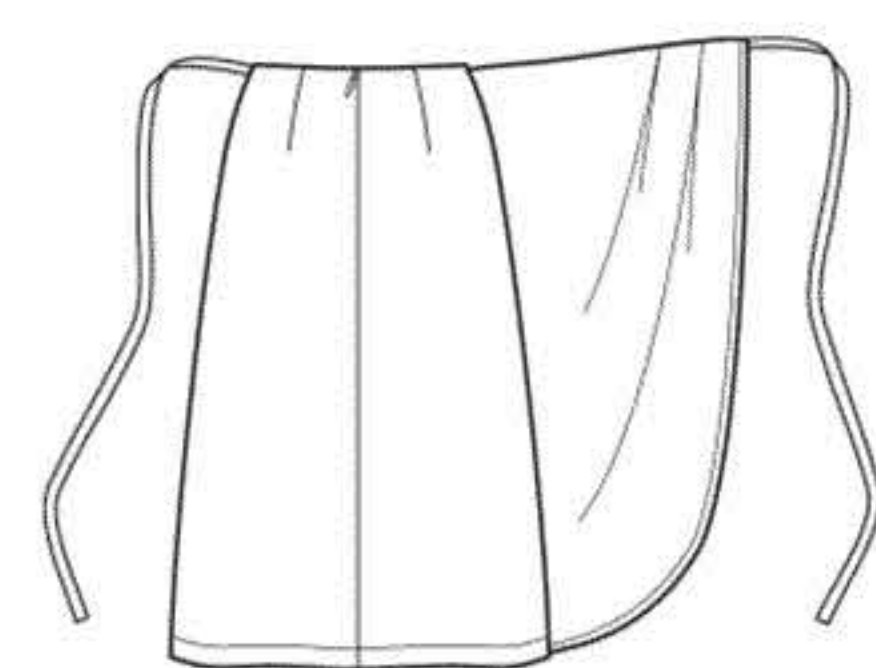
B Short Drapé/ B Short Drapeado

115cm**	1.20	1.20	1.20	1.30	1.60	1.60	1.60	1.60	1.70	1.80	m
150cm**	1.10	1.10	1.10	1.10	1.10	1.10	1.10	1.20	1.30	1.40	"

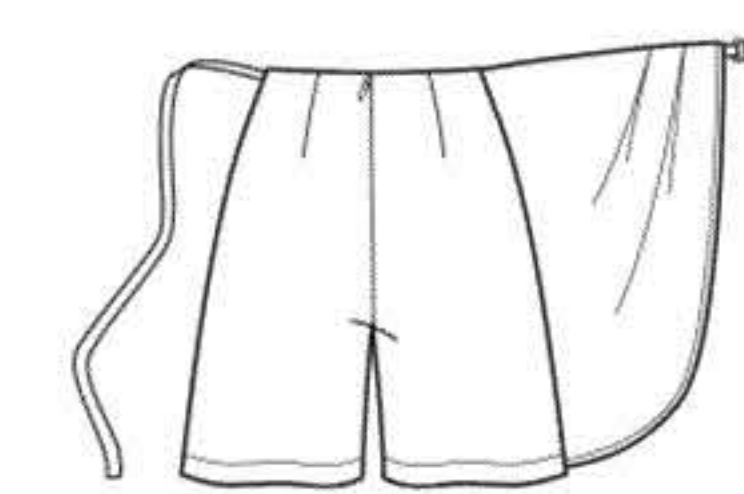
C Pantalon Drapé/ C Pantalón Drapeado

115cm**	2.30	2.30	2.30	2.40	2.50	2.70	2.90	3.50	3.50	3.60	m
150cm**	2.00	2.20	2.30	2.30	2.30	2.30	2.40	2.40	2.40	2.60	"

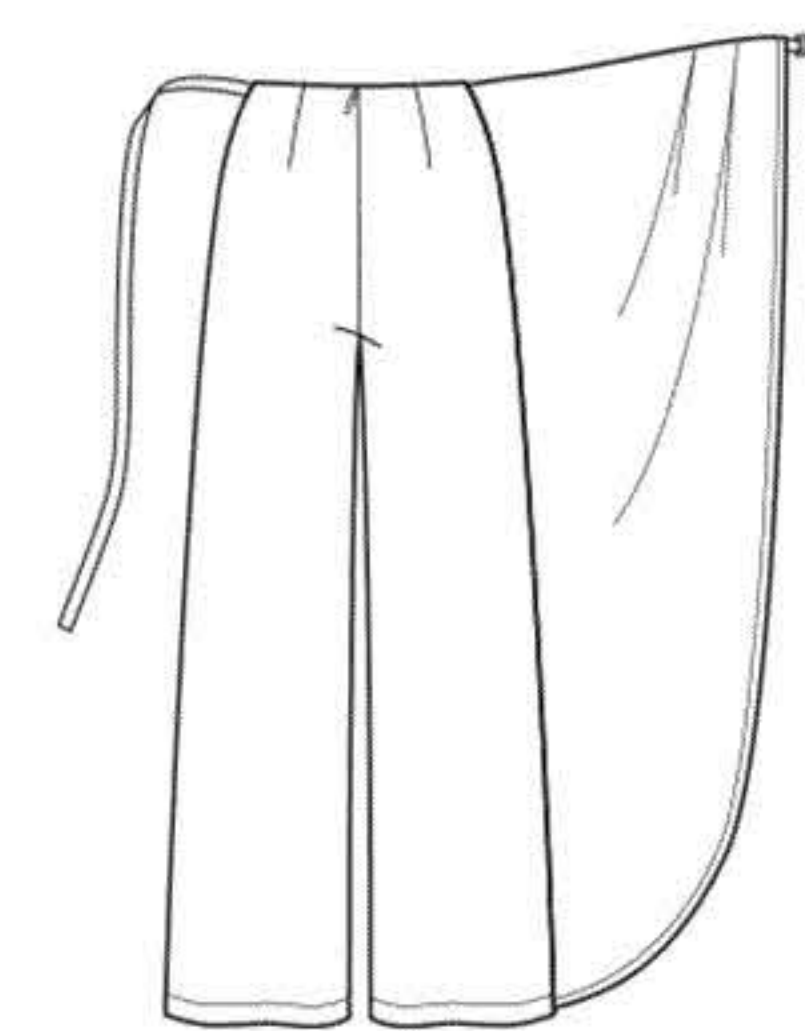
*without nap **with nap ***with or without nap *sans sens **avec sens ***avec ou sans sens
 *sin pelusa **con pelusa ***sin o con pelusa



A



B



C

Instrucciones de costura en Español en el Interior del Patrón.