

# S9112 15 PIECES/PIEZAS



A

## MISSES' BUTTON DOWN TOP, SHELL AND PANTS

**Fabrics:** Chambray, Chiffon, Cotton Types, Crepe, Double Georgette, Gauze, Linen Types, Shirtings. Extra fabric needed to match plaids, stripes or one-way design fabrics.

**Notions:** Thread. **A:** Eight ½" (1.3cm) buttons. **B:** One pkg. of ½" (1.3cm) wide single fold bias tape. **C,D:** One 7" (18cm) invisible zipper, ¾ yd. (0.70m) of 1" (2.5cm) wide elastic.

<b>Sizes</b>	6	8	10	12	14	16	18	20	22	24	
<b>European</b>	32	34	36	38	40	42	44	46	48	50	

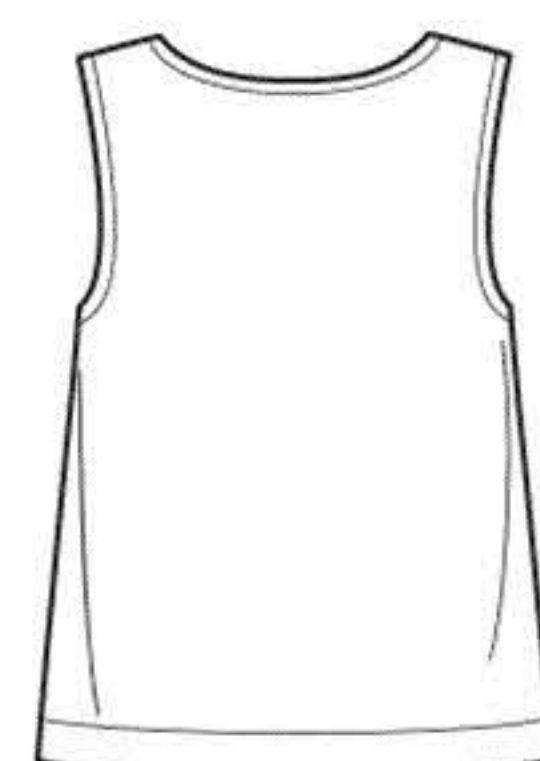
### A Button Down Top

45***	1⅝	1¾	1⅞	2⅞	2⅞	2¼	2¼	2¼	2⅜	2⅜	Yd
60***	1½	1½	1½	1½	1½	1⅝	1⅝	1⅝	1⅝	1⅝	"

**Interfacing-** ¾ yd. of 20" to 25" lightweight fusible, such as Pellon®

### B Shell

45***	⅞	⅞	⅞	1⅝	1⅝	1⅝	1⅝	1⅝	1⅝	1⅝	Yd
60***	⅞	⅞	⅞	⅞	⅞	⅞	⅞	⅞	⅞	⅞	"



B

### C Pants- worn 1" below waist

45***	2⅞	2⅞	2⅜	2⅜	2⅜	2⅜	2¾	2⅜	2¾	2¾	Yd
60***	1⅝	1⅝	1⅝	1⅝	1⅝	1¾	2⅞	2⅞	2⅜	2½	"

**C,D Interfacing-** ¾ yd. of 20" to 25" lightweight fusible, such as Pellon®

### D Pants with Front Wrap- worn 1" below waist

45***	2¾	2¾	3	3	3	3	3⅞	3⅞	3⅞	3⅞	Yd
60***	1⅞	1⅞	2	2	2	2¼	2¾	2¾	2⅞	3⅞	"



C

## FINISHED GARMENT MEASUREMENTS

<b>A Bust</b>	38½	39½	40½	42	44	46	48	50	52	54	In
<b>B Bust</b>	34½	35½	36½	38	40	42	44	46	48	50	"
<b>C,D Hip</b>	35½	36½	37½	39	41	43	45	47	50	52	"
<b>Finished back length from base of neck:</b>											
<b>A</b>	23½	23¾	24	24¼	24½	24¾	25	25¼	25½	25¾	In
<b>B</b>	21½	21¾	22	22¼	22½	22¾	23	23¼	23½	23¾	"
<b>C Side Length</b>	38½	38¾	39	39¼	39½	39¾	40	40¼	40½	40¾	"
<b>C Leg Width</b>	18	18½	19	19½	20	20½	21	21½	22	22½	"
<b>D Side Length</b>	32½	32¾	33	33¼	33½	33¾	34	34¼	34½	34¾	"
<b>D Leg Width</b>	19	19½	20	20½	21	21½	22	22½	23	23½	"

## JEUNE FEMME: HAUT AVEC BOUTONS, HAUT SANS MANCHES ET PANTALON

## SEÑORITAS: BLUSA CON BOTONES, BLUSA SIN MANGAS Y PANTALÓN

<b>Tailles/ Tallas</b>	6	8	10	12	14	16	18	20	22	24
<b>European</b>	32	34	36	38	40	42	44	46	48	50
<b>Françaises</b>	34	36	38	40	42	44	46	48	50	52

### A Haut Avec Boutons/ A Blusa Con Botones

115cm**	1.50	1.60	1.70	1.90	2.00	2.00	2.00	2.10	2.10	2.20	m
150cm**	1.30	1.40	1.40	1.40	1.40	1.40	1.40	1.50	1.50	1.50	"

**Entoilage-** 0.70m de 51cm à 64cm, léger, thermocollant tel que Pellon®

**Entretela-** 0.70m de 51cm a 64cm, ligera, adhesiva como Pellon®

### B Haut Sans Manches/ B Blusa Sin Mangas

115cm**	0.80	0.80	0.80	1.40	1.40	1.50	1.50	1.50	1.50	1.50	m
150cm**	0.80	0.80	0.80	0.80	0.80	0.80	0.80	0.80	0.80	0.80	"

### C Pantalon- se porte à 2.5cm au-dessous de la taille/ C Pantalón- se lleva a 2.5cm debajo de la cintura

115cm**	1.90	2.00	2.20	2.20	2.20	2.20	2.50	2.50	2.50	2.50	m
150cm**	1.50	1.50	1.50	1.50	1.50	1.60	2.00	2.00	2.20	2.20	"

**C,D Entoilage-** 0.70m de 51cm à 64cm, léger, thermocollant tel que Pellon®

**C,D Entretela-** 0.70m de 51cm a 64cm, ligera, adhesiva como Pellon®

### D Pantalon avec Drapé- se porte à 2.5cm au-dessous de la taille/ D Pantalón con Drapeado- se lleva a 2.5cm debajo de la cintura

115cm**	2.50	2.50	2.70	2.70	2.80	2.80	2.80	2.80	2.90	2.90	m
150cm**	1.70	1.70	1.80	1.90	1.90	2.10	2.50	2.60	2.60	2.80	"

\*without nap \*\*with nap \*\*\*with or without nap

\*sans sens \*\*avec sens \*\*\*avec ou sans sens

\*sin pelusa \*\*con pelusa \*\*\*con o sin pelusa

**Instrucciones de costura en Español en el Interior del Patrón.**