

# S9113

17 PIECES/PIEZAS

## MISSES' TUNICS, TOP AND PULL ON PANT

**Fabrics:** Batiks, Chambray, Cotton Lawn, Cotton Types, Gauze, Linen Types, Shirtings, Voile.  
Extra fabric needed to match plaids, stripes or one-way design fabrics.

**Notions:** Thread. **A:** Seven ¾" buttons. **B:** One 1½" button. **D:** 1½ yds. of 1¼" wide elastic.

<b>Sizes</b>	6	8	10	12	14	16	18	20	22	24	
<b>European</b>	32	34	36	38	40	42	44	46	48	50	

<b>A Tunic</b>											
45 <sup>***</sup>	2½	2½	2½	2½	2½	2½	3	3	3½	3½	Yd
60 <sup>**</sup>	2½	2¼	2¼	2¼	2¼	2¼	2¼	2¼	2¼	2¼	"

**Interfacing-** 1½ yds. of 20" to 25" lightweight fusible, such as Pellon®

<b>B Tunic</b>											
45 <sup>***</sup>	2½	2½	2½	2¼	2¼	2¼	2½	2½	2½	2½	Yd
60 <sup>**</sup>	2	2	2	2	2	2	2½	2½	2½	2½	"

**Interfacing-** ¾ yd. of 20" to 25" lightweight fusible, such as Pellon®

<b>C Top</b>											
45 <sup>***</sup>	1½	1½	1¾	1⅞	1⅞	1⅞	1⅞	1⅞	2	2	Yd
60 <sup>**</sup>	1¾	1¾	1¾	1¾	1¾	1½	1½	1½	1½	1½	"

**Interfacing-** ⅔ yd. of 20" to 25" lightweight fusible, such as Pellon®

<b>D Pants- worn 1" below waist</b>											
45 <sup>***</sup>	2½	2½	2½	2¾	2¾	2¾	2¾	2⅞	2⅞	2⅞	Yd
60 <sup>**</sup>	1½	1½	1½	1½	2¼	2¼	2¼	2¾	2½	2¾	"

**Interfacing-** ¼ yd. of 20" to 25" lightweight fusible, such as Pellon®

### FINISHED GARMENT MEASUREMENTS

<b>A,B,C Bust</b>	36½	37½	38½	40	42	44	46	48	50	52	In
<b>D Hip</b>	37½	38½	39½	41	43	45	47	49	52	54	"
<b>Finished back length from base of neck:</b>											
<b>A Tunic</b>	45½	45¾	46	46¼	46½	46¾	47	47¼	47½	47¾	In
<b>B Tunic</b>	27½	27¾	28	28¼	28½	28¾	29	29¼	29½	29¾	"
<b>C Top</b>	21½	21¾	22	22¼	22½	22¾	23	23¼	23½	23¾	"
<b>D Side Length</b>	40½	40¾	41	41¼	41½	41¾	42	42¼	42½	42¾	"
<b>D Leg Width</b>	17	17½	18	18½	19	19½	20	20½	21	21½	"

### JEUNE FEMME: TUNIQUE, HAUT ET PANTALON PULL ON

### SEÑORITAS: TÚNICAS, BLUSA Y PANTALÓN PULL ON

<b>Tailles</b>	6	8	10	12	14	16	18	20	22	24
<b>Françaises</b>	34	36	38	40	42	44	46	48	50	52
<b>Europeas</b>	32	34	36	38	40	42	44	46	48	50

<b>A Tunique/ A Túnica</b>											
115cm <sup>**</sup>	2.40	2.40	2.40	2.40	2.40	2.40	2.80	2.80	2.80	2.80	m
150cm <sup>**</sup>	2.00	2.00	2.10	2.10	2.10	2.10	2.10	2.10	2.10	2.10	"

**Entoilage-** 1.10m de 51cm à 64cm, léger, thermocollant tel que Pellon®

**Entretela-** 1.10m de 51cm a 64cm, ligera, adhesiva como Pellon®

<b>B Tunique/ B Túnica</b>											
115cm <sup>**</sup>	2.00	2.00	2.00	2.00	2.00	2.00	2.40	2.40	2.40	2.40	m
150cm <sup>**</sup>	1.80	1.80	1.80	1.90	1.90	1.90	1.90	1.90	1.90	1.90	"

**Entoilage-** 0.60m de 51cm à 64cm, léger, thermocollant tel que Pellon®

**Entretela-** 0.60m de 51cm a 64cm, ligera, adhesiva como Pellon®

<b>C Haut/ C Blusa</b>											
115cm <sup>**</sup>	1.50	1.50	1.60	1.70	1.70	1.70	1.70	1.70	1.80	1.80	m
150cm <sup>**</sup>	1.30	1.30	1.30	1.30	1.30	1.30	1.30	1.40	1.40	1.40	"

**Entoilage-** 0.30m de 51cm à 64cm, léger, thermocollant tel que Pellon®

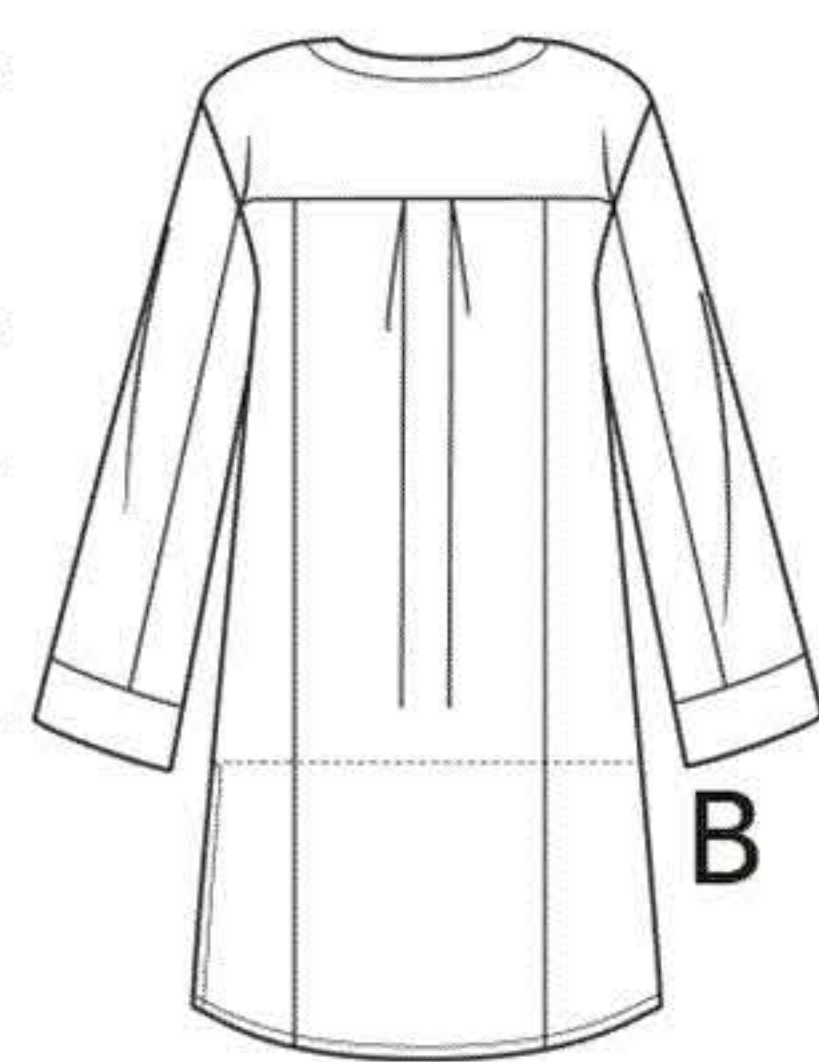
**Entretela-** 0.30m de 51cm a 64cm, ligera, adhesiva como Pellon®

<b>D Pantalon- est portée 2.5cm sous la taille/ D Pantalón- usado a 2.5cm debajo de la cintura</b>											
115cm <sup>**</sup>	2.30	2.40	2.40	2.50	2.50	2.50	2.60	2.60	2.60	2.60	m
150cm <sup>**</sup>	1.50	1.50	1.50	1.50	2.00	2.10	2.10	2.10	2.40	2.50	"

**Entoilage-** 0.20m de 51cm à 64cm, léger, thermocollant tel que Pellon®

**Entretela-** 0.20m de 51cm a 64cm, ligera, adhesiva como Pellon®

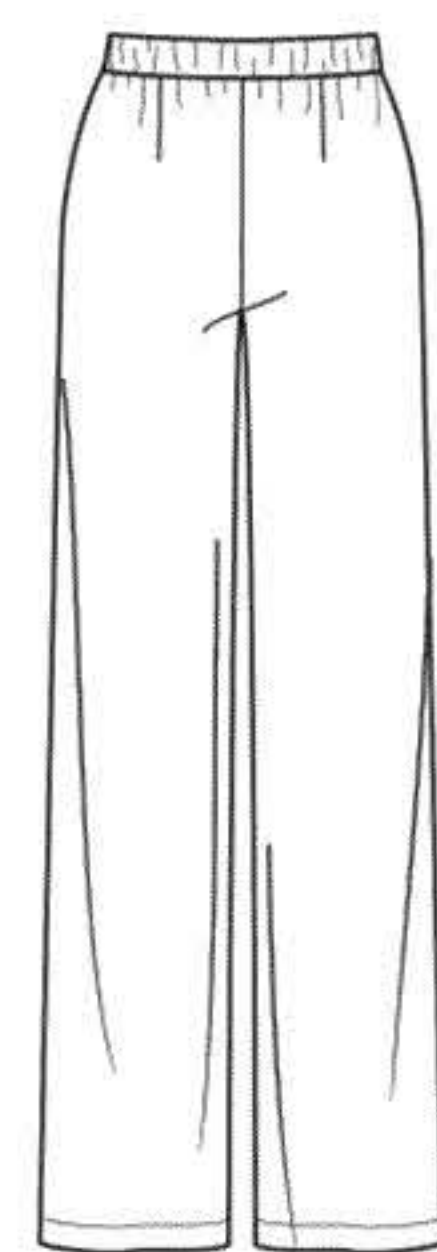
\*without nap \*\*with nap \*\*\*with or without nap \*sans sens \*\*avec sens \*\*\*avec ou sans sens  
\*sin pelusa \*\*con pelusa \*\*\*sin o con pelusa



A



C



D

Instrucciones de costura en Español en el Interior del Patrón.