

# S9116

11 PIECES/PIEZAS

## MISSES' DRESS, TOPS WITH SLEEVE VARIATIONS AND PANTS WITH TIE BELT

**Fabrics:** Chambray, Linens, Silky Types, Soft Cottons. Extra fabric needed to match plaids, stripes or one-way design fabrics.

**Notions:** Thread. **A,B,C:** One ½" button. **D:** 1⅜ yds. of 1" wide elastic.

Sizes	XXS	XS	S	M	L	XL	XXL	
	4	6-8	10-12	14-16	18-20	22-24	26	
Sizes-European	30	32-34	36-38	40-42	44-46	48-50	52	

A Dress								
45***	2⅜	2⅜	2½	2½	2½	2⅝	2⅞	Yd
60***	1⅝	2⅜	2⅜	2½	2½	2½	2½	"

B Top								
45***	1½	1½	1½	1⅝	1⅝	1¾	2	Yd
60***	1⅞	1¼	1½	1⅝	1⅝	1⅝	1⅝	"

C Top								
45***	1½	1½	1½	1⅝	1⅝	1⅝	1¾	Yd
60***	1⅞	1¼	1½	1⅝	1⅝	1⅝	1⅝	"

D Pants with Tie Belt- worn 1" below waist								
45***	2⅜	2⅜	2⅜	2⅜	2¾	2¾	3⅜	Yd
60***	1⅞	2⅞	2¼	2¼	2⅜	2½	2½	"

### FINISHED GARMENT MEASUREMENTS

<b>A,B,C Bust</b>	34	36½	39	43	47	51	55	In
<b>D Hip</b>	35	37½	40	44	48	52	56	"
<b>Finished back length from base of neck:</b>								
<b>A Dress</b>	38	38½	39	39½	40	40½	41	In
<b>B,C Top</b>	22	22½	23	23½	24	24½	25	"
<b>D Pants Side Length</b>	37	37½	38	38½	39	39½	40	"
<b>D Pants Leg Width</b>	18½	20	21½	23¾	26	28¼	30½	"

## JEUNE FEMME: ROBE, HAUTS AVEC VARIATIONS DE MANCHES ET PANTALON AVEC CEINTURE À NOUER/ SEÑORITAS: VESTIDO, BLUSAS CON VARIACIONES DE MANGAS Y PANTALÓN CON CINTURÓN DE LAZO

Tailles/ Tallas	TTP/XXP	TP/XP	P	M	G	TG/XG	TTG/XXG	
	4	6-8	10-12	14-16	18-20	22-24	26	
Tailles-Françaises	32	34-36	38-40	42-44	46-48	50-52	54	
Tallas-Europeas	30	32-34	36-38	40-42	44-46	48-50	52	

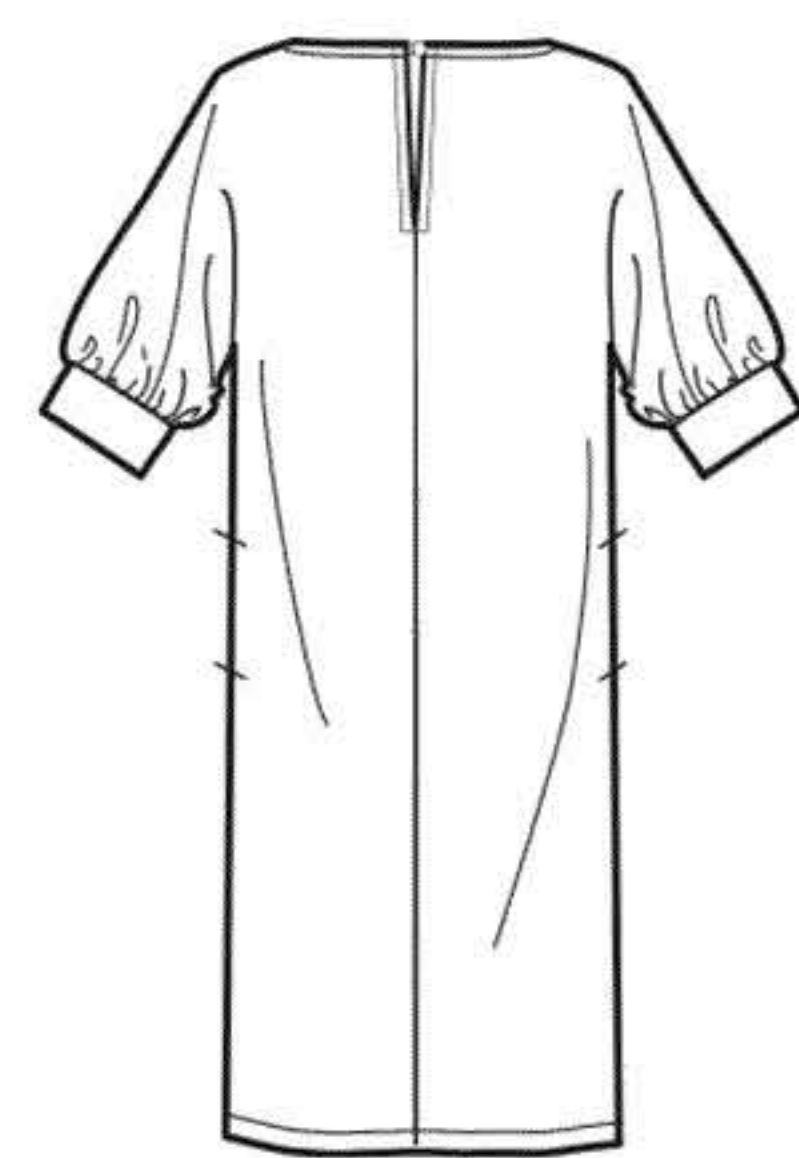
A Robe/ A Vestido								
115cm**	2.20	2.20	2.20	2.30	2.30	2.40	2.70	m
150cm**	1.50	2.20	2.20	2.20	2.30	2.30	2.30	"

B Haut/ B Blusa								
115cm**	1.40	1.40	1.40	1.40	1.50	1.60	1.90	m
150cm*	1.10	1.10	1.40	1.40	1.50	1.50	1.50	"

C Haut/ C Blusa								
115cm**	1.40	1.40	1.40	1.40	1.50	1.50	1.50	m
150cm*	1.10	1.10	1.40	1.40	1.50	1.50	1.50	"

D Pantalon avec Ceinture à Nouer- est portée 2.5cm sous la taille								
115cm**	2.10	2.10	2.20	2.20	2.50	2.50	3.00	m
150cm*	1.70	2.00	2.00	2.10	2.20	2.20	2.30	"

\*without nap \*\*with nap \*\*\*with or without nap \*sans sens \*\*avec sens \*\*\*avec ou sans sens  
 \*sin pelusa \*\*con pelusa \*\*\*sin o con pelusa



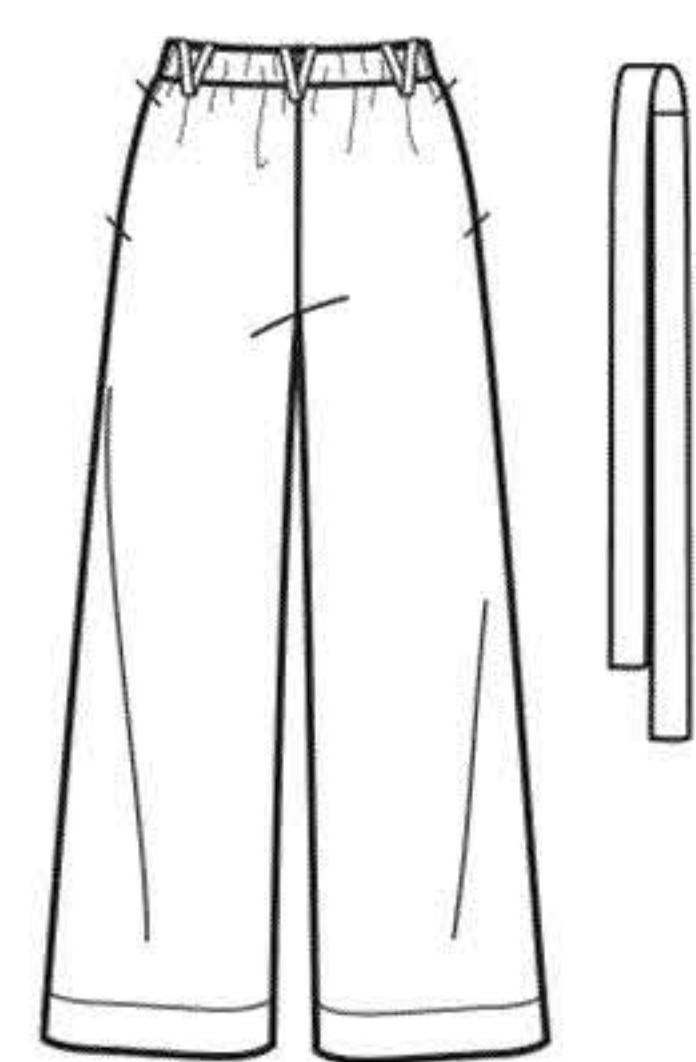
A



B



C



D

Instrucciones de costura en Español en el Interior del Patrón.