

# S9131 11 PIECES/PIEZAS

## WOMEN'S AND MEN'S PANTS OR SHORTS AND ROBE

**Fabrics:** Cotton and Cotton Blends, Flannel, Gingham, Laundered Cottons, Batiks, Chambray, Pique, Lightweight Poplin, Seersucker, Silks and Silk Types, Challis, Laundered Silks-Rayons, Cotton Interlock, Jerseys, Lightweight Double Knits, Fleece, Sweatshirt Fleece, Stretch Velvet, Velour. Extra fabric needed to match plaids, stripes or one-way design fabrics.

**Notions:** Thread.

Sizes	S	M	L	XL	XXL	XXXL	
<b>A Robe</b>							
45"***	4 <sup>3</sup> / <sub>8</sub>	4 <sup>3</sup> / <sub>8</sub>	4 <sup>3</sup> / <sub>8</sub>	4 <sup>1</sup> / <sub>2</sub>	5 <sup>1</sup> / <sub>4</sub>	5 <sup>3</sup> / <sub>8</sub>	Yd
60"***	3 <sup>5</sup> / <sub>8</sub>	3 <sup>3</sup> / <sub>4</sub>	3 <sup>3</sup> / <sub>4</sub>	3 <sup>7</sup> / <sub>8</sub>	4	4 <sup>1</sup> / <sub>4</sub>	"

**Interfacing-** 1<sup>7</sup>/<sub>8</sub> yd. of 22" to 25" lightweight fusible, such as Pellon®

**Ribbon for Inside Ties-** 1<sup>1</sup>/<sub>4</sub> yd. of <sup>3</sup>/<sub>8</sub>" wide

<b>B Pants</b>							
45"***	2 <sup>5</sup> / <sub>8</sub>	2 <sup>5</sup> / <sub>8</sub>	2 <sup>5</sup> / <sub>8</sub>	2 <sup>3</sup> / <sub>4</sub>	3 <sup>1</sup> / <sub>2</sub>	4 <sup>3</sup> / <sub>8</sub>	Yd
60"***	2 <sup>1</sup> / <sub>4</sub>	2 <sup>1</sup> / <sub>4</sub>	2 <sup>5</sup> / <sub>8</sub>	2 <sup>3</sup> / <sub>4</sub>	2 <sup>3</sup> / <sub>4</sub>	2 <sup>3</sup> / <sub>4</sub>	"

**B,C Back Elastic-** 1 yd. of <sup>1</sup>/<sub>2</sub>" wide; **Front Drawstring-** 1<sup>7</sup>/<sub>8</sub> yd. of <sup>1</sup>/<sub>2</sub>" wide twill tape or ribbon when heavier fabrics are used

<b>C Shorts</b>							
45"***	1 <sup>3</sup> / <sub>8</sub>	1 <sup>3</sup> / <sub>8</sub>	1 <sup>3</sup> / <sub>8</sub>	1 <sup>3</sup> / <sub>8</sub>	1 <sup>7</sup> / <sub>8</sub>	1 <sup>7</sup> / <sub>8</sub>	Yd
60"***	1 <sup>1</sup> / <sub>4</sub>	1 <sup>3</sup> / <sub>8</sub>	1 <sup>3</sup> / <sub>8</sub>	1 <sup>3</sup> / <sub>8</sub>	1 <sup>3</sup> / <sub>8</sub>	1 <sup>3</sup> / <sub>8</sub>	"

### FINISHED GARMENT MEASUREMENTS

<b>B,C Hip</b>	45	49	53	57	61	65	In
<b>Finished back length from base of neck:</b>							
<b>A</b>	49 <sup>1</sup> / <sub>2</sub>	50	50 <sup>1</sup> / <sub>2</sub>	51	51 <sup>1</sup> / <sub>2</sub>	52	In
<b>B Side Length</b>	41	41	41	42	42	42	"
<b>B Leg Width</b>	20 <sup>1</sup> / <sub>2</sub>	21 <sup>1</sup> / <sub>2</sub>	22 <sup>1</sup> / <sub>2</sub>	23 <sup>1</sup> / <sub>2</sub>	24 <sup>1</sup> / <sub>2</sub>	25 <sup>1</sup> / <sub>2</sub>	"
<b>C Side Length</b>	18	18	18	19	19	19	"

### FEMME ET HOMME: PANTALON OU SHORT ET ROBE DE CHAMBRE

### SEÑORAS Y HOMBRES: PANTALÓN O SHORT Y BATA

Tailles/ Tallas	P	M	G	TG/XG	TTG/XXG	TTTG/XXXG	
<b>A Robe de Chambre/ A Bata</b>							
115cm**	3.90	4.00	4.00	4.10	4.80	4.90	m
150cm**	3.40	3.40	3.40	3.60	3.70	3.80	"

**Entoilage-** 1.70m de 55cm á 64cm, legèr, thermocollant tel que Pellon®

**Entretela-** 1.70m de 55cm a 64cm, ligera, adhesiva como Pellon®

**Ruban pour les Liens Intèrieurs-** 1.10m de 1cm de large

**Cinta para los Lazos Interiores-** 1.10m de 1cm de ancho

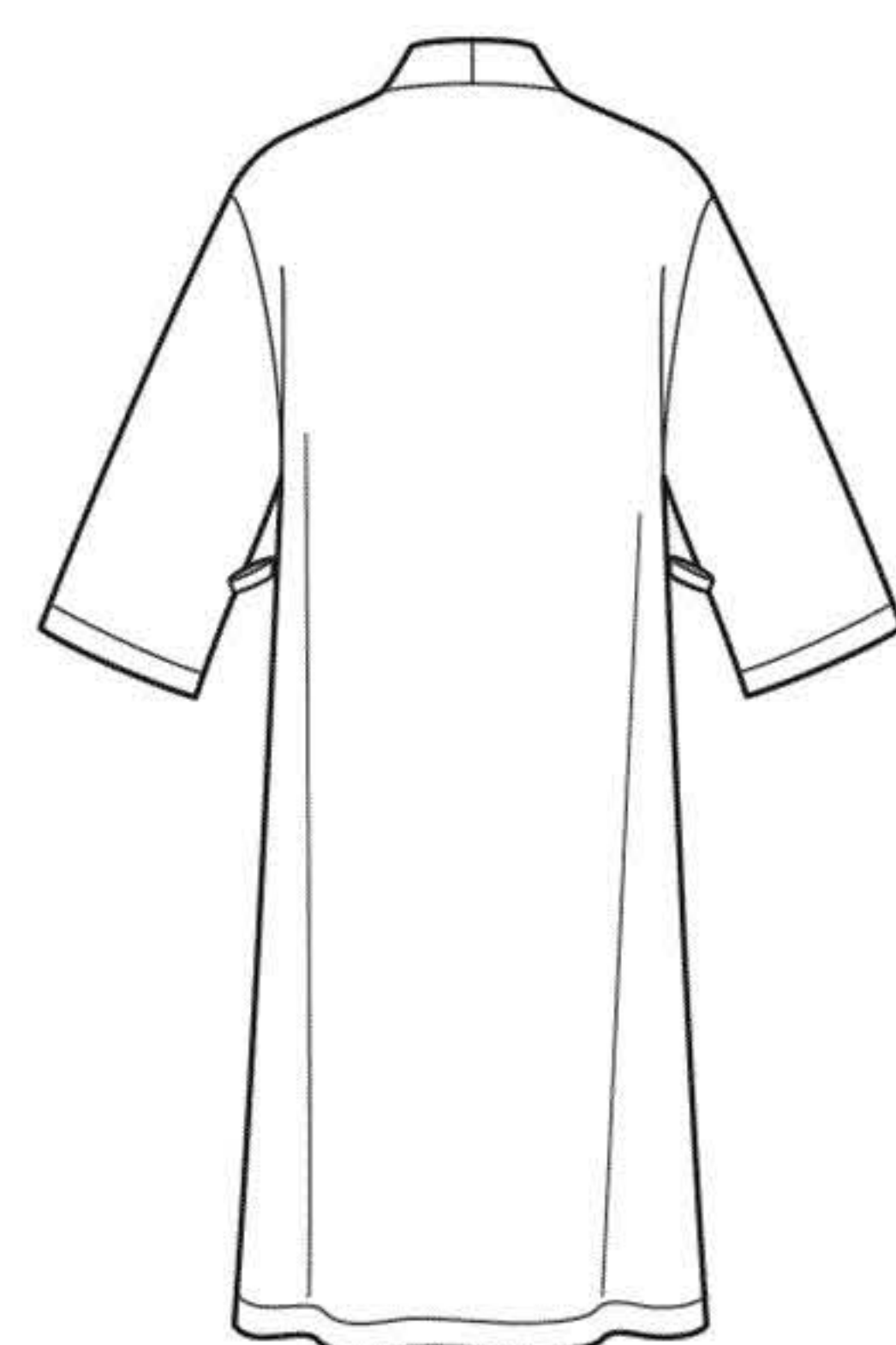
<b>B Pantalon/ B Pantalón</b>							
115cm**	2.40	2.40	2.40	2.50	3.20	4.00	m
150cm**	2.00	2.10	2.40	2.50	2.50	2.50	"

**B,C Elastique Dos-** 0.90m de 1.3cm de large; **Cordelière Devant-** 1.70m de 1.3cm de large de talonnette de coton ou de ruban si vous utilisez des tissus plus épais

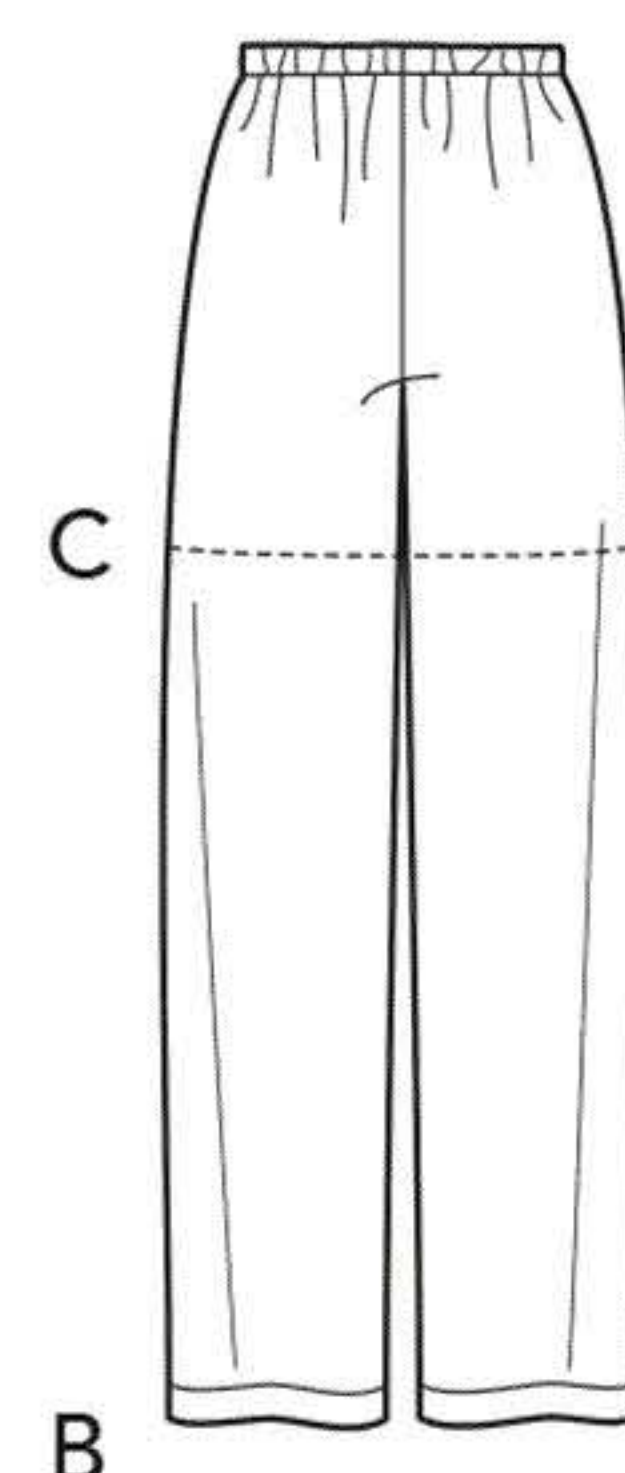
**B,C Elástico de la Parte Trasera-** 0.90m de 1.3cm de ancho; **Cordón del Frente-** 1.70m de 1.3cm de ancho de galón asargado o de cinta si usted utiliza telas más gruesas

<b>C Short/ C Short</b>							
115cm**	1.20	1.20	1.20	1.30	1.70	1.70	m
150cm**	1.20	1.20	1.20	1.30	1.30	1.30	"

\*without nap \*\*with nap \*\*\*with or without nap \*sans sens \*\*avec sens \*\*\*avec ou sans sens  
\*sin pelusa \*\*con pelusa \*\*\*con o sin pelusa



A



B

C



**Instrucciones de costura en Español en el Interior del Patrón.**