

S9134 7 PIECES/PIEZAS

MISSES' DRESS WITH RELEASED PLEATS AND SLEEVE AND HEM VARIATIONS

Fabrics: Cotton, Chambray, Gingham, Linen, Cotton Lawn, Gauze, Poplin, Seersucker, Shirtings, Voile. Extra fabric needed to match plaids, stripes or one-way design fabrics.

Notions: Thread, one 22" (55cm) invisible zipper, one pkg. of 1/2" (1.3cm) wide single fold bias tape.

Sizes	6	8	10	12	14	16	18	20	22	24
European	32	34	36	38	40	42	44	46	48	50

A Dress

45"***	3 3/4	3 7/8	3 7/8	3 7/8	4	4 1/8	4 1/4	4 3/8	4 3/8	4 1/2	Yd
60"***	2 7/8	2 7/8	3	3	3 1/8	3 1/8	3 1/8	3 1/4	3 1/4	3 3/8	"

Interfacing- 3/8 yd. of 20" to 25" lightweight fusible

B Dress

45"***	4 1/2	4 1/2	4 1/2	4 5/8	4 5/8	4 3/4	4 7/8	5	5	5 1/8	Yd
60"***	3 3/8	3 3/8	3 3/8	3 1/2	3 1/2	3 5/8	3 5/8	3 3/4	3 7/8	4	"

C Dress

45"***	6 1/8	6 1/8	6 1/8	6 1/4	6 3/8	6 3/8	6 1/2	6 5/8	6 5/8	6 3/4	Yd
60"***	4 5/8	4 5/8	4 3/4	4 7/8	4 7/8	5	5	5	5 1/8	5 1/4	"

FINISHED GARMENT MEASUREMENTS

A,B,C Bust	37	38	39	40 1/2	42 1/2	44 1/2	46 1/2	48 1/2	50 1/2	52 1/2	In
Finished back length from base of neck:											
A	43 1/2	43 3/4	44	44 1/4	44 1/2	44 3/4	45	45 1/4	45 1/2	45 3/4	In
B	45 1/2	45 3/4	46	46 1/4	46 1/2	46 3/4	47	47 1/4	47 1/2	47 3/4	"
C	57 1/2	57 3/4	58	58 1/4	58 1/2	58 3/4	59	59 1/4	59 1/2	59 3/4	"

JEUNE FEMME: ROBE À PLIS LÂCHES ET VARIATIONS DE MANCHE ET D'OURLET

SEÑORITAS: VESTIDO CON PLIEGUES SUELTOS Y VARIACIONES DE MANGA Y DE DOBLADILLO

Tailles/ Tallas	6	8	10	12	14	16	18	20	22	24
Françaises	34	36	38	40	42	44	46	48	50	52
Europeas	32	34	36	38	40	42	44	46	48	50

A Robe/ A Vestido

115cm**	3.50	3.50	3.50	3.60	3.60	3.80	3.80	3.90	4.00	4.10	m
150cm**	2.60	2.60	2.70	2.70	2.80	2.80	2.90	3.00	3.00	3.10	"

Entoilage- 0.30m de 51cm à 64cm, léger, thermocollant

Entretela- 0.30m de 51cm a 64cm, ligera, adhesiva

B Robe/ B Vestido

115cm**	4.10	4.10	4.20	4.20	4.30	4.40	4.40	4.50	4.60	4.70	m
150cm**	3.10	3.10	3.10	3.20	3.20	3.30	3.30	3.40	3.50	3.70	"

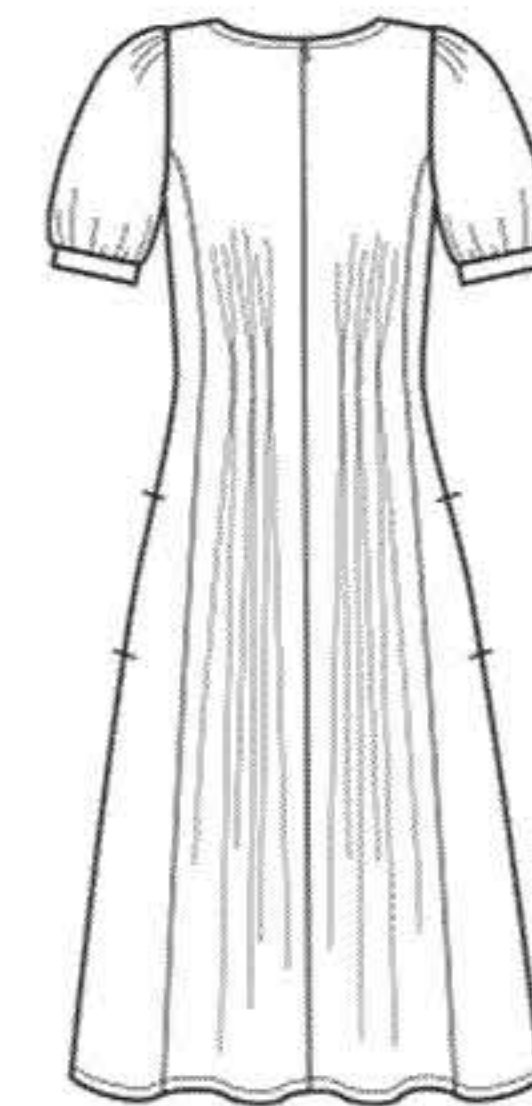
C Robe/ C Vestido

115cm**	5.60	5.60	5.60	5.70	5.80	5.90	5.90	6.00	6.10	6.20	m
150cm**	4.20	4.20	4.30	4.50	4.50	4.50	4.50	4.50	4.70	4.80	"

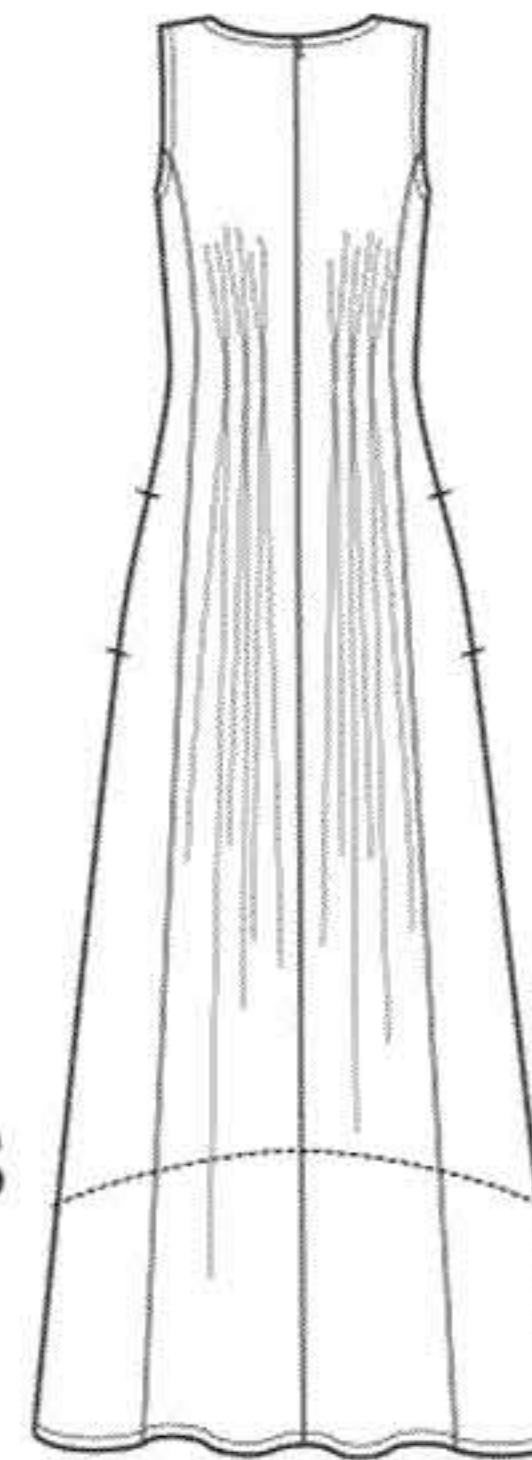
*without nap **with nap ***with or without nap

*sin pelusa **con pelusa ***sin o con pelusa

*sans sens **avec sens ***avec ou sans sens



A



B

C

Instrucciones de costura en Español en el Interior del Patrón.