

S9137

8 PIECES/PIEZAS

MISSES' DRESSES WITH CROSS FRONT OR BACK

Fabrics: Challis, Chambray, Cotton Types, Gingham, Linen Types, Pique, Poplin, Sateen, Seersucker, Shirtings, Silky Types. Extra fabric needed to match plaids, stripes or one-way design fabrics.

Notions: Thread, one 16" (41cm) invisible zipper, one pkg. of ½" (1.3cm) wide single fold bias tape. **A,B:** Six ¾" (2cm) buttons. **C:** Five ¾" (2cm) buttons.

Sizes	6	8	10	12	14	16	18	20	22	24
European	32	34	36	38	40	42	44	46	48	50

A Dress

45"***	2 ⁵ / ₈	2 ⁵ / ₈	2 ⁵ / ₈	2 ³ / ₄	3 ¹ / ₄	3 ¹ / ₄	3 ³ / ₈	3 ⁵ / ₈	3 ³ / ₄	4	Yd
60"***	2 ¹ / ₄	2 ¹ / ₄	2 ¹ / ₄	2 ¹ / ₄	2 ³ / ₈	2 ³ / ₈	2 ¹ / ₂	2 ¹ / ₂	2 ⁵ / ₈	2 ⁵ / ₈	"

B Dress

45"***	2 ⁵ / ₈	2 ³ / ₄	2 ³ / ₄	2 ³ / ₄	3 ¹ / ₈	3 ¹ / ₄	3 ¹ / ₂	3 ³ / ₄	3 ⁷ / ₈	4	Yd
60"***	2 ¹ / ₄	2 ¹ / ₄	2 ¹ / ₄	2 ³ / ₈	2 ³ / ₈	2 ¹ / ₂	2 ¹ / ₂	2 ¹ / ₂	2 ⁵ / ₈	2 ⁵ / ₈	"

C Dress

45"***	2 ³ / ₈	2 ¹ / ₂	2 ¹ / ₂	2 ⁵ / ₈	3 ¹ / ₈	3 ¹ / ₄	3 ³ / ₈	3 ¹ / ₂	3 ⁵ / ₈	3 ³ / ₄	Yd
60"***	2	2 ¹ / ₈	2 ¹ / ₈	2 ¹ / ₈	2 ¹ / ₄	2 ¹ / ₄	2 ³ / ₈	2 ³ / ₈	2 ¹ / ₂	2 ¹ / ₂	"

FINISHED GARMENT MEASUREMENTS

A,B Bust	35	36	37	38½	40½	42½	44½	46½	48½	50½	In
A,B Hip	39½	40½	41½	43	45	47	49	51	53	55	"
Finished back length from base of neck:											
A,B	40½	40¾	41	41¼	41½	41¾	42	42¼	42½	42¾	In
C	37½	37¾	38	38¼	38½	38¾	39	39¼	39½	39¾	"
A,B Width	61	62	63	64½	66½	68½	70½	72½	74½	76½	"
C Width	57	58	59	60½	62½	64½	66½	68½	70½	72½	"

JEUNE FEMME: ROBES À DEVANT OU DOS CROISÉS

SEÑORITAS: VESTIDOS CON FRENTE O ESPALDA CRUZADOS

Tailles/ Tallas	6	8	10	12	14	16	18	20	22	24
Françaises	34	36	38	40	42	44	46	48	50	52
Europeas	32	34	36	38	40	42	44	46	48	50

A Robe/ A Vestido

115cm**	2.40	2.40	2.40	2.60	2.90	3.00	3.10	3.30	3.50	3.60	m
150cm**	2.00	2.00	2.00	2.10	2.20	2.20	2.30	2.30	2.40	2.40	"

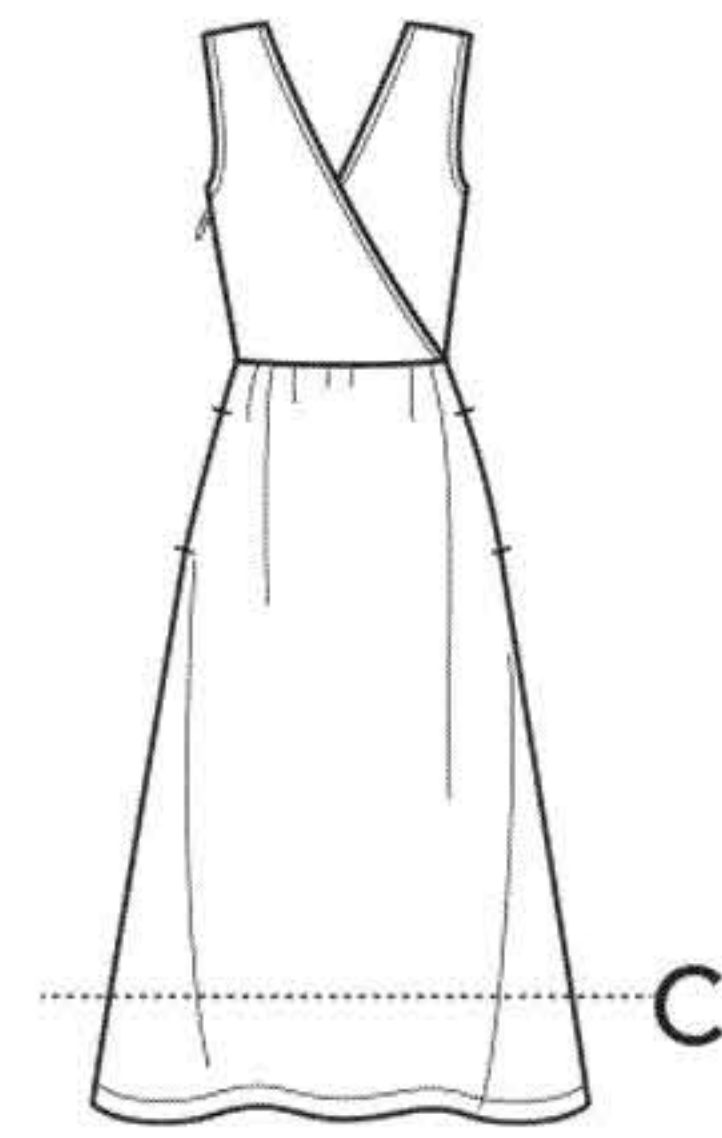
B Robe/ B Vestido

115cm**	2.40	2.50	2.50	2.50	2.90	3.00	3.20	3.40	3.50	3.60	m
150cm**	2.00	2.00	2.10	2.10	2.20	2.20	2.30	2.30	2.40	2.40	"

C Robe/ C Vestido

115cm**	2.20	2.20	2.30	2.40	2.80	2.90	3.10	3.20	3.30	3.40	m
150cm**	1.90	1.90	1.90	1.90	2.00	2.10	2.10	2.20	2.20	2.30	"

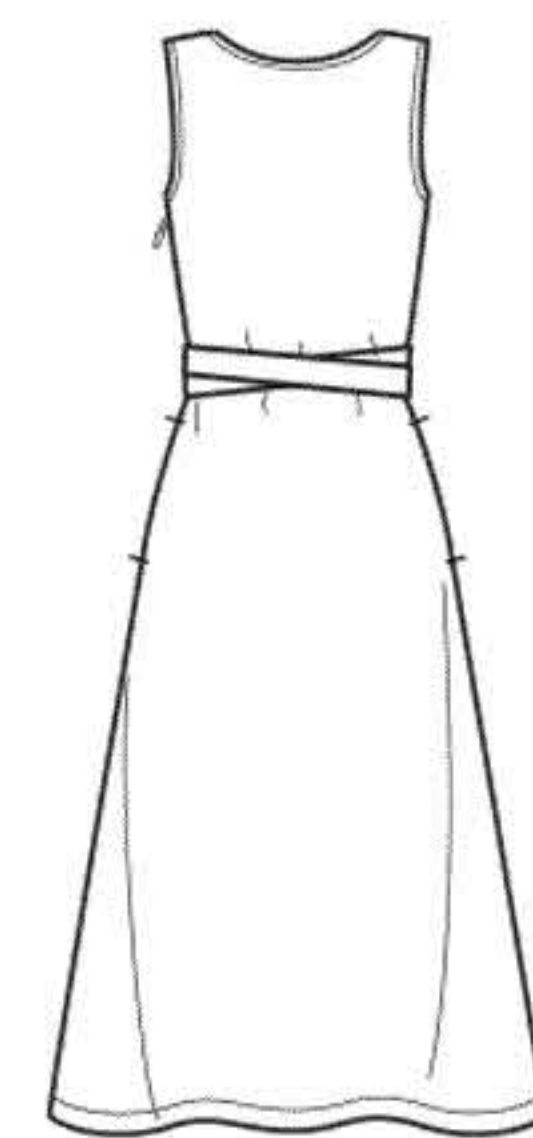
*without nap **with nap ***with or without nap *sans sens **avec sens ***avec ou sans sens
 *sin pelusa **con pelusa ***sin o con pelusa



A



A,B,C



B

Instrucciones de costura en Español en el Interior del Patrón.