

S9143

7 PIECES/PIEZAS

MISSES' BUTTON-UP TOP WITH STAND COLLAR AND LENGTH, SLEEVE AND DRAPED FRONT VARIATIONS

Fabrics: Chambray, Soft Linens, Shirtings, Voile. Also in Silky Types such as: Crepes, Double Georgette, Rayon. Extra fabric needed to match plaids, stripes or one-way design fabrics.

Notions: Thread, six ½" (1.3cm) buttons. **A:** One pkg. of ½" (1.3cm) wide single fold bias tape.

Sizes	6	8	10	12	14	16	18	20	22
European	32	34	36	38	40	42	44	46	48

A,B,C Interfacing- ¼ yd. of 20" to 25" lightweight fusible

A Top										
45"***	1 5/8	1 3/4	1 3/4	1 3/4	1 3/4	1 7/8	1 7/8	1 7/8	1 7/8	Yd
60"***	1	1	1	1	1 1/8	1 1/4	1 1/4	1 5/8	1 5/8	"

B Top										
45"***	2 7/8	3	3 1/8	3 1/8	3 1/4	3 3/8	3 3/8	3 3/8	3 1/2	Yd
60"***	2 1/8	2 1/8	2 1/8	2 1/8	2 1/4	2 3/8	2 3/8	2 3/4	2 3/4	"

C Top										
45"***	2 3/8	2 1/2	2 1/2	2 1/2	3	3 1/8	3 1/8	3 1/8	3 1/8	Yd
60"***	1 3/4	1 7/8	1 7/8	1 7/8	2	2 1/8	2 1/8	2 3/8	2 1/2	"

FINISHED GARMENT MEASUREMENTS

A,B,C Bust	37 1/2	38 1/2	39 1/2	41	43	45	47	49	51	In
Finished back length from base of neck:										
A,B	26	26 1/4	26 1/2	26 3/4	27	27 1/4	27 1/2	27 3/4	28	In
C	22	22 1/4	22 1/2	22 3/4	23	23 1/4	23 1/2	23 3/4	24	"

JEUNE FEMME: HAUT BOUTONNÉ À COL DROIT ET VARIATIONS DE LONGUEUR, DE MANCHE ET DE DEVANT DRAPÉ

SEÑORITAS: BLUSA ABOTONADO CON CUELLO RECTO Y VARIACIONES DE LARGO, DE MANGA Y DE FRENTE DRAPEADO

Tailles/ Tallas	6	8	10	12	14	16	18	20	22
Françaises	34	36	38	40	42	44	46	48	50
Europeas	32	34	36	38	40	42	44	46	48

A,B,C Entoilage- 0.20m de 51cm à 64cm, léger, thermocollant

A,B,C Entretela- 0.20m de 51cm a 64cm, ligera, adhesiva

A Haut/ A Blusa										
115cm**	1.40	1.60	1.60	1.60	1.60	1.70	1.70	1.70	1.70	m
150cm**	0.90	0.90	0.90	0.90	1.10	1.10	1.10	1.40	1.50	"

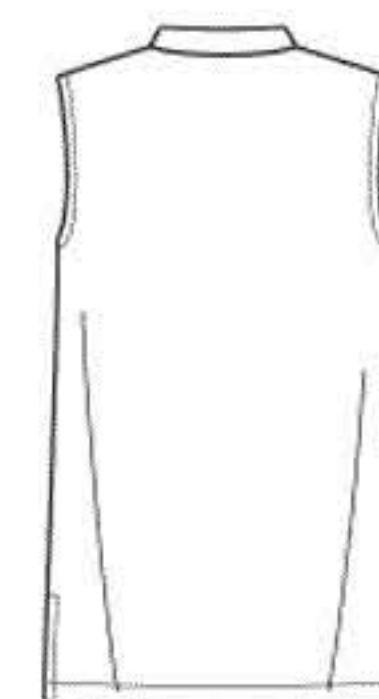
B Haut/ B Blusa										
115cm**	2.60	2.80	2.80	2.80	2.90	3.10	3.10	3.10	3.20	m
150cm**	1.90	1.90	1.90	1.90	2.00	2.10	2.20	2.50	2.60	"

C Haut/ C Blusa										
115cm**	2.20	2.20	2.30	2.30	2.70	2.80	2.90	2.90	2.90	m
150cm**	1.60	1.70	1.70	1.70	1.80	1.90	2.00	2.20	2.20	"

*without nap **with nap ***with or without nap

*sans sens **avec sens ***avec ou sans sens

*sin pelusa **con pelusa ***sin o con pelusa



A



B



C

Instrucciones de costura en Español en el Interior del Patrón.