

# S9150

14 PIECES/PIEZAS

## MISSES' KNIT JUMPSUIT WITH WRAP FRONT AND SELF-TIE AND PULL-ON MINI SKIRT

**Fabrics:** **A Jumpsuit/ Wrap** in Four-way Stretch Knit fabrics only. **B Skirt** in Ponte, Interlock, Jersey. **B Waistband and Lower Band** in Stretchable Ribbed Knit Fabric. See Pick-A-Knit® Rule. Suitable for Overlock/Serger. Extra fabric needed to match plaids, stripes or one-way design fabrics.

**Notions:** Thread. **A:** Two pkgs. of ¼" (6mm) wide elastic.

<b>Sizes</b>	6	8	10	12	14	16	18	20	22	24
<b>European</b>	32	34	36	38	40	42	44	46	48	50

### A Jumpsuit- Sized for stretch knits only

60"***	1 5/8	1 3/4	1 3/4	1 3/4	1 3/4	1 3/4	1 7/8	2	2 1/8	2 1/8	Yd
--------	-------	-------	-------	-------	-------	-------	-------	---	-------	-------	----

### B Skirt- Sized for stretch knits only- 1/2 yd. of 60"\*\*\*

### Contrast Bands- Sized for stretch knits only

18" to 20" tubular or 36" to 40" flat\*\*

	5/8	5/8	5/8	5/8	5/8	5/8	1	1	1	1	Yd
--	-----	-----	-----	-----	-----	-----	---	---	---	---	----

### FINISHED GARMENT MEASUREMENTS

<b>A Bust</b>	26 1/2	27 1/2	28 1/2	30	32	34	36	38	40	42	In
---------------	--------	--------	--------	----	----	----	----	----	----	----	----

### Finished back length from base of neck:

<b>A Jumpsuit</b>	52 1/2	53	53 1/2	54	54 1/2	55	55 1/2	56	56 1/2	57	In
-------------------	--------	----	--------	----	--------	----	--------	----	--------	----	----

### A Jumpsuit Leg Width

	8	8 1/2	9	9 1/2	10	10 1/2	11	11 1/2	12	12 1/2	In
--	---	-------	---	-------	----	--------	----	--------	----	--------	----

### B Skirt Length

	16	16	16	16	16	16	16	16	16	16	In
--	----	----	----	----	----	----	----	----	----	----	----

**JEUNE FEMME: COMBINAISON EN TRICOT À DEVANT PORTEFEUILLE ET ATTACHE DU MÊME TISSU, ET MINI JUPE EN TRICOT À TAILLE ÉLASTIQUE**

**SEÑORITAS: JUMPSUIT EN TEJIDO DE PUNTO CON FRETE ENVOLVENTE Y CINTURÓN DE LA MISMA TELA, Y MINI FALDA DE TEJIDO DE PUNTO CON CINTURA ELÁSTICA**

<b>Tailles/ Tallas</b>	6	8	10	12	14	16	18	20	22	24
<b>European</b>	32	34	36	38	40	42	44	46	48	50
<b>Françaises</b>	34	36	38	40	42	44	46	48	50	52

### A Combinaison- Taille pour les tricots extensibles seulement/ A Jumpsuit- Talla para las mallas estirables solamente

150cm**	1.50	1.50	1.60	1.60	1.60	1.60	1.70	1.80	1.90	1.90	m
---------	------	------	------	------	------	------	------	------	------	------	---

### B Jupe- Taille pour les tricots extensibles seulement/ B Falda- Talla para las mallas estirables solamente- 0.40m de 150cm\*\*

### Bandes Contrastantes- Taille pour les tricots extensibles seulement

46cm à 51cm tubulaire ou de 90cm à 102cm\*\* à plat

### Bandas Contrastantes- Talla para las mallas estirables solamente

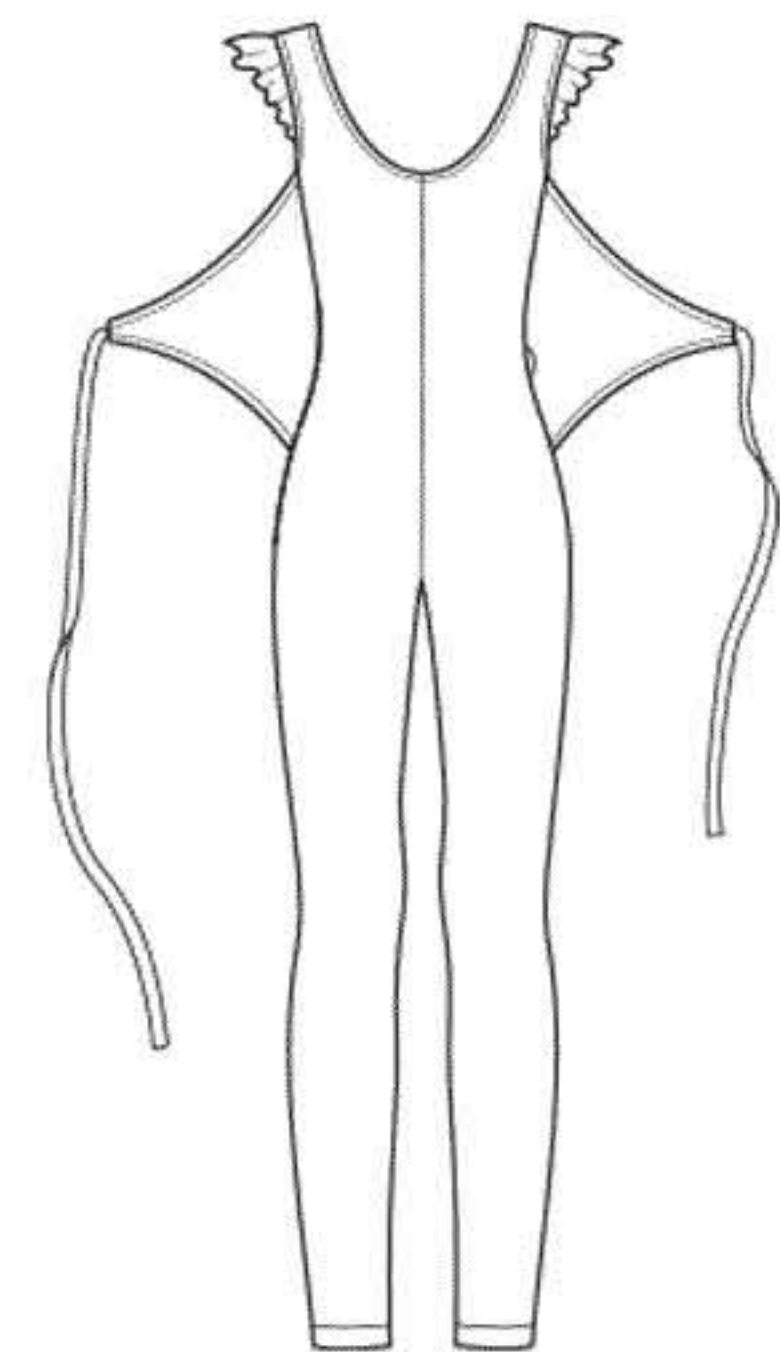
46cm a 51cm tubular o de 90cm a 102cm\*\* plano

	0.50	0.50	0.50	0.50	0.50	0.50	0.90	0.90	0.90	0.90	m
--	------	------	------	------	------	------	------	------	------	------	---

\*without nap \*\*with nap \*\*\*with or without nap

\*sans sens \*\*avec sens \*\*\*avec ou sans sens

\*sin pelusa \*\*con pelusa \*\*\*con o sin pelusa



A



B

**Instrucciones de costura en Español en el Interior del Patrón.**