

S8917

9 PIECES/PIEZAS

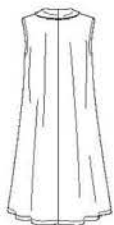


A



D

B



C

MISSES' UNLINED JACKET OR VEST WITH SLEEVE AND LENGTH VARIATIONS

Fabrics: Batiks, Cotton Lawn, Cotton Types, Double Knit, Gauze, Linen Types, Ponte, Silky Types. Extra fabric needed to match plaids, stripes or one-way design fabrics.

Notions: Thread, two 3/4" buttons. **C:** One pkg. of 1/2" wide single fold bias tape.

BODY MEASUREMENTS (For Sizing Help Visit www.simplicity.com/sizehelp)

Bust	30½-31½	32½-34	36-38	40-42	44-46	In
Waist	23-24	25-26½	28-30	32-34	37-39	"
Hip-9" below waist	32½-33½	34½-36	38-40	42-44	46-48	"
Back-neck to waist	15½-15¾	16-16¼	16½-16¾	17-17¼	17½-17½	"

Sizes	XS	S	M	L	XL	
	6-8	10-12	14-16	18-20	22-24	
Sizes-European	32-34	36-38	40-42	44-46	48-50	

A,B,C,D Interfacing- 3/8 yd. of 20" to 25" lightweight fusible, such as Pellon®

A Jacket

45***	2¾	3	3	3¼	3¼	Yd
60***	2¼	2½	2¾	2¾	2¾	"

B Jacket

45***	1¾	1¾	1¾	2	2	Yd
60***	1¾	1¾	1½	1½	1½	"

Contrast Band and Tab

45" to 60***	¾	1	1	1	1	Yd
--------------	---	---	---	---	---	----

C Vest

45***	3¾	4	4¼	4¼	4¼	Yd
60***	3¼	3¾	3½	3¾	3¾	"

D Jacket

45***	2¼	2¾	2¾	2¾	3	Yd
60***	1¾	1¾	1¾	2¼	2½	"

FINISHED GARMENT MEASUREMENTS

A,B,C,D Bust	40	42½	46½	50½	54½	In
---------------------	----	-----	-----	-----	-----	----

Finished back length from base of neck:

A	24½	25	25½	26	26½	In
B,D	20½	21	21½	22	22½	"
C	43½	44	44½	45	45½	"

*without nap **with nap ***with or without nap

JEUNE FEMME: VESTE ET GILET NON DOUBLÉS AVEC CHOIX DE MANCHES ET DIFFÉRENTES LONGUEURS

Tissus: Batiks, Linon de Coton, Cotonnades, Jersey Double, Gaze, Toile de Lin, Jersey Ponte, Tissus Soyeux. Prévoyez davantage de tissu pour raccorder les écossais, rayures ou motifs unidirectionnels.

Mercerie: Fil, deux boutons de 2cm. **C:** Un paquet de ruban simple de biais de 1.3cm de large.

SEÑORITAS: CHAQUETA Y CHALECO SIN FORRO CON DIFERENTES MANGAS Y LARGOS

Telas: Batik, Linón de Algodón, Mezclas de Algodones, Mallas Dobles, Gasa, Tela de Lino, Mallas Ponte, Telas Sedosas. Se necesita tela adicional para casar cuadros, rayas o telas estampadas en una dirección.

Mercería: Hilo, dos botones de 2cm. **C:** Un paquete de cinta de bias sencillo de 1.3cm de ancho.

MESURES NORMALISÉES/MEDIDAS DEL CUERPO

Poitrine/Busto	78-80	83-87	92-97	102-107	112-117	cm
Taille/Cintura	58-61	64-67	71-76	81-87	94-99	"

Hanches (23cm au-dessous de la taille)/Caderas (23cm abajo de la cintura)

	83-85	88-92	97-102	107-112	117-122	cm
--	-------	-------	--------	---------	---------	----

Dos (encolure à taille)/Espalda (escote a cintura)

	39.5-40	40.5-41.5	42-42.5	43-44	44-44.5	cm
--	---------	-----------	---------	-------	---------	----

Tailles/Tallas	TP/XP	P	M	G	TG/XG	
	6-8	10-12	14-16	18-20	22-24	

Tailles-Françaises	34-36	38-40	42-44	46-48	50-52	
Tallas-Europeas	32-34	36-38	40-42	44-46	48-50	

A,B,C,D Entoilage- 0.40m de 51cm à 64cm, léger, thermocollant tel que Pellon®

A,B,C,D Entretela- 0.40m de 51cm a 64cm, ligera, adhesiva como Pellon®

A Veste/A Chaqueta

115cm**	2.70	2.70	2.80	2.80	2.90	m
150cm**	1.90	1.90	2.20	2.20	2.20	"

B Veste/B Chaqueta

115cm**	1.70	1.70	1.80	1.80	1.80	m
150cm**	1.20	1.30	1.30	1.40	1.40	"

Bande et Patte Contrastants/Banda y Lengüeta Contrastantes

115cm à/a 150cm**	0.80	0.90	0.90	0.90	0.90	m
-------------------	------	------	------	------	------	---

C Gilet/C Chaleco

115cm**	3.60	3.60	3.80	3.90	3.90	m
150cm**	3.00	3.10	3.20	3.30	3.50	"

D Veste/D Chaqueta

115cm**	2.10	2.10	2.60	2.70	2.70	m
150cm**	1.40	1.60	1.70	2.10	2.20	"

*sans sens **avec sens ***avec ou sans sens *sin pelusa **con pelusa ***sin o con pelusa