

S8932

19 PIECES/PIEZAS

Medidas e Instrucciones de costura en Español en el Interior del Patrón.

MISSES' VINTAGE BIKINI TOP, SHORTS, WRAP SKIRT AND LINED COATS

Fabrics: Batiks, Chambray, Cotton Types, Gingham, Linen Types, Pique, Poplin, Seersucker, Silky Types. **D,E Lining** also in French Terry. Extra fabric needed to match plaids, stripes or one-way design fabrics.

Notions: Thread. **A:** Two ¾" buttons, ¼ yd. of ¼" wide cording. **B:** Four ¾" buttons. **C:** One ¾" button. **E:** One pair of shoulder pads (opt.).

BODY MEASUREMENTS (For Sizing Help Visit www.simplicity.com/sizehelp)

Bust	29½	30½	31½	32½	34	36	38	40	42	In
Waist	22	23	24	25	26½	28	30	32	34	"
Hip-9" below waist										
	31½	32½	33½	34½	36	38	40	42	44	In
Back-neck to waist	15¼	15½	15¾	16	16¼	16½	16¾	17	17¼	"
Sizes	4	6	8	10	12	14	16	18	20	
European	30	32	34	36	38	40	42	44	46	

A Bikini Top

45" or 60"***	¾	¾	1	1	1	1	1	1½	1½	Yd
---------------	---	---	---	---	---	---	---	----	----	----

B Shorts

45"***	1	1	1	1	1	1	1½	1½	1¼	Yd
60"***	¾	¾	1	1	1	1	1½	1½	1¼	"

Interfacing- 1¼ yd. of 20" to 25" lightweight fusible, such as Pellon®

C Wrap Skirt

45"***	1½	1½	1½	1½	1½	1½	1½	1½	1¾	Yd
60"***	1¼	1¼	1¼	1¼	1½	1½	1½	1½	1½	"

Interfacing- 1½ yd. of 20" to 25" lightweight fusible, such as Pellon®

D Jacket

45"***	1½	1½	1½	2	2	2	2	2	2½	Yd
60"***	1¼	1¼	1¼	1¼	1¼	1½	1½	2	2	"

Lining

45"***	1½	1½	1½	1½	1½	2	2	2	2	Yd
--------	----	----	----	----	----	---	---	---	---	----

E Jacket

45"***	2¼	2½	2½	2½	2½	2½	2½	2½	2½	Yd
60"***	1½	1½	1½	1½	1½	1½	1½	2½	2½	"

Lining

45"***	2¼	2¼	2½	2½	2½	2½	2½	2½	2½	Yd
--------	----	----	----	----	----	----	----	----	----	----

FINISHED GARMENT MEASUREMENTS (Includes Design and Wearing EASE)

B Hip	35½	36½	37½	38½	40	41½	43½	45½	47½	In
C Hip	39	40	41	42	43½	45	47	49	51	"
Finished back length from base of neck:										
B Side Length	11¼	11½	11¾	12	12¼	12½	12¾	13	13¼	In
C Length	14	14	14	14	14	14	14	14	14	"
D,E Length	29¼	29½	29¾	30	30¼	30½	30¾	31	31¼	"

*without nap **with nap ***with or without nap

JEUNE FEMME: HAUT DE BIKINI, SHORT, JUPE DRAPÉ ET VESTES DOUBLÉES CLASSIQUES

Tissus: Batiks, Chambray, Cotonnades, Vichy, Toile de Lin, Piqué, Popeline fine, Seersucker, Tissus Soyeux. **D,E Doublure** aussi en Tissu Éponge. Prévoyez davantage de tissu pour raccorder les écossais, rayures ou motifs unidirectionnels.

Mercerie: Fil. **A:** Deux boutons de 1cm, 0.30m de cordon de 6mm de large. **B:** Quatre boutons de 2cm. **C:** Un bouton de 2cm. **E:** Une paire d'épaulettes (facult.).

MESURES NORMALISÉES

Poitrine	75	78	80	83	87	92	97	102	107	cm
Taille	56	58	61	64	67	71	76	81	87	"
Hanches (23cm au-dessous de la taille)										
	80	83	85	88	92	97	102	107	112	cm
Dos (encolure à taille)	38.5	39.5	40	40.5	41.5	42	42.5	43	44	"
Tailles	4	6	8	10	12	14	16	18	20	
Françaises	32	34	36	38	40	42	44	46	48	

A Haut de Bikini

115cm ou 150cm**	0.80	0.80	0.90	0.90	0.90	0.90	0.90	1.00	1.10	m
------------------	------	------	------	------	------	------	------	------	------	---

B Short

115cm**	0.90	0.90	0.90	0.90	0.90	1.00	1.00	1.10	1.10	m
150cm**	0.80	0.80	0.90	0.90	0.90	1.00	1.00	1.10	1.10	"

Entoilage- 1.10m de 51cm à 64cm, léger, thermocollant tel que Pellon®

C Jupe Drapé

115cm**	1.30	1.30	1.30	1.40	1.40	1.40	1.50	1.50	1.50	m
150cm**	1.10	1.10	1.10	1.20	1.20	1.20	1.30	1.30	1.40	"

Entoilage- 1.40m de 51cm à 64cm, léger, thermocollant tel que Pellon®

D Veste

115cm**	1.70	1.70	1.80	1.80	1.80	1.80	1.80	1.90	1.90	m
150cm**	1.10	1.10	1.10	1.10	1.20	1.20	1.30	1.80	1.80	"

Doublure

115cm*	1.70	1.70	1.70	1.70	1.70	1.80	1.80	1.80	1.80	m
--------	------	------	------	------	------	------	------	------	------	---

E Veste

115cm**	2.10	2.10	2.20	2.20	2.20	2.30	2.30	2.30	2.40	m
150cm**	1.40	1.40	1.40	1.40	1.50	1.50	1.70	2.30	2.30	"

Doublure

115cm*	2.00	2.10	2.10	2.20	2.20	2.20	2.30	2.30	2.30	m
--------	------	------	------	------	------	------	------	------	------	---

MESURES DES VÊTEMENTS FINI

B Hanches	90	92.5	95	98	102	106	111	116	121	cm
C Hanches	99	102	104	107	111	115	120	125	130	"
Longueur finie du depuis la base du cou:										
B Longueur du Côté	28.5	29	30	30.5	31	32	32.5	33	33.5	cm
C Longueur	35.5	35.5	35.5	35.5	35.5	35.5	35.5	35.5	35.5	"
D,E Longueur	74	75	75.5	76	76.5	77.5	78	78.5	79	"

*sans sens **avec sens ***avec ou sans sens

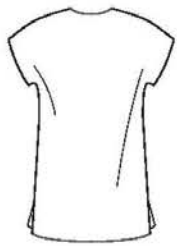


A

B



C



D



E