

V1633

EASY/FACILE

MISSES' DRESS: Dresses **A, B** have long sleeves with cuffs, front pleats, back darts, collar, back zipper closure, and skirt variations.

Combinations: **A5**(6-8-10-12-14), **E5**(14-16-18-20-22)

FABRICS: Crepe, Rayon Challis, Novelty Sheers, Jersey.
Unsuitable for obvious diagonals.

*With Nap. **Without Nap.

SIZES	6	8	10	12	14	16	18	20	22
A 45"/**	2 ⁵ / ₈	2 ⁵ / ₈	2 ³ / ₄	2 ³ / ₄	2 ³ / ₄	3 ¹ / ₈	3 ¹ / ₈	3 ¹ / ₈	3 ¹ / ₈
60"/**	2 ¹ / ₈	2 ¹ / ₈	2 ¹ / ₄	2 ¹ / ₄	2 ¹ / ₄	2 ¹ / ₄	2 ¹ / ₄	2 ¹ / ₄	2 ¹ / ₄
LINING A									
45"/**	1 ¹ / ₄	1 ³ / ₈	1 ³ / ₈	1 ³ / ₈	1 ⁷ / ₈	1 ⁷ / ₈	1 ⁷ / ₈	1 ⁷ / ₈	1 ⁷ / ₈
B 45"/**	3 ¹ / ₂	3 ¹ / ₂	3 ⁵ / ₈	3 ³ / ₄	3 ⁷ / ₈	4	4 ¹ / ₈	4 ¹ / ₈	4 ¹ / ₈
60"/**	2 ³ / ₄	2 ³ / ₄	2 ³ / ₄	2 ³ / ₄	2 ³ / ₄	2 ³ / ₄	3 ¹ / ₄	3 ¹ / ₄	3 ³ / ₈
LINING B									
45"/**	2 ¹ / ₈	2 ¹ / ₄	2 ³ / ₈	2 ¹ / ₂	2 ⁵ / ₈	2 ³ / ₄	2 ⁷ / ₈	3	3 ¹ / ₄

FUSIBLE INTERFACING A, B - 18", 20" - 1/2 yd.

NOTIONS: A, B: One 24" Invisible Zipper, Seven Snaps.

FINISHED GARMENT MEASUREMENTS

Width, lower edge

A	36 ¹ / ₂	37 ¹ / ₂	38 ¹ / ₂	40	42	44	46	48	50
B	67 ¹ / ₂	68 ¹ / ₂	69 ¹ / ₂	71	73	75	77	79	81

Back length from base of neck

A	35 ¹ / ₂	35 ³ / ₄	36	36 ¹ / ₄	36 ¹ / ₂	36 ³ / ₄	37	37 ¹ / ₄	37 ¹ / ₂
B	47 ¹ / ₂	47 ³ / ₄	48	48 ¹ / ₄	48 ¹ / ₂	48 ³ / ₄	49	49 ¹ / ₄	49 ¹ / ₂

ROBE (J. femme): Robes **A, B** à manches longues avec poignet, plis sur le devant, pinces sur le dos, col, fermeture à glissière sur le dos, et variations de jupe.

Séries: **A5**(6-8-10-12-14), **E5**(14-16-18-20-22)

TISSUS: Crêpe, Etamine de rayonne, Tissus transparents fantaisie, Jersey.

Grandes diagonales ne conviennent pas.

*Avec Sens. **Sans Sens.

TAILLES	6	8	10	12	14	16	18	20	22
A 115cm*/**	2.4	2.4	2.6	2.6	2.6	2.9	2.9	2.9	2.9
150cm*/**	2.0	2.0	2.1	2.1	2.1	2.1	2.1	2.1	2.1
DOUBLURE A									
115cm**	1.2	1.3	1.3	1.3	1.8	1.8	1.8	1.8	1.8
B 115cm*/**	3.2	3.2	3.4	3.5	3.6	3.7	3.8	3.8	3.8
150cm*/**	2.6	2.6	2.6	2.6	2.6	2.6	3.0	3.0	3.1
DOUBLURE B									
115cm**	2.0	2.1	2.2	2.3	2.4	2.6	2.7	2.8	3.0

ENTOILAGE THERMO COLLANT A, B - 46, 51cm - 0.5m

MERCERIE: A, B: 1 Fermeture à Glissière invisible de 60cm, 7 Boutons-pression.

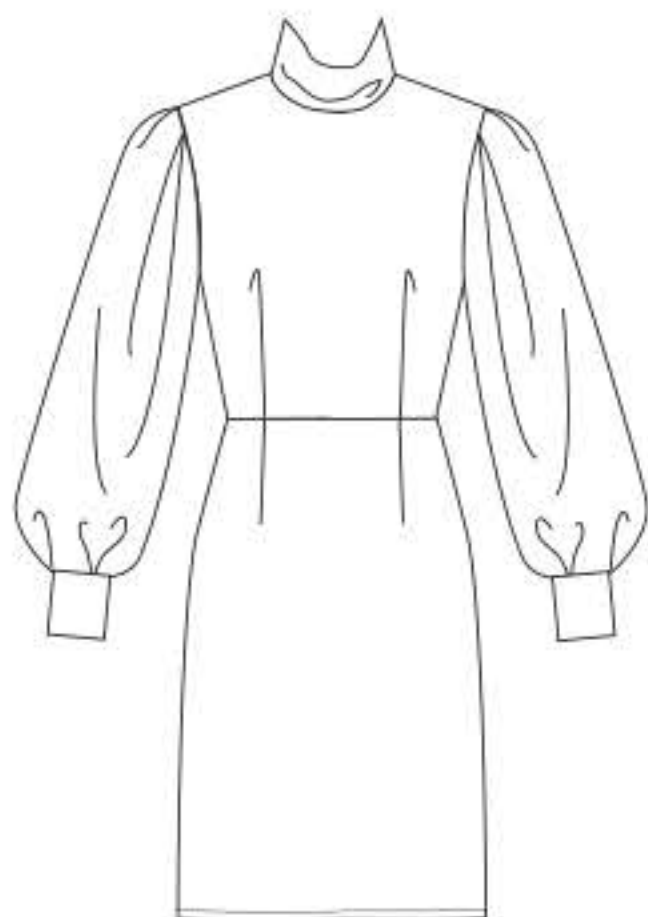
MESURES DU VÊTEMENT FINI

Largeur à l'ourlet

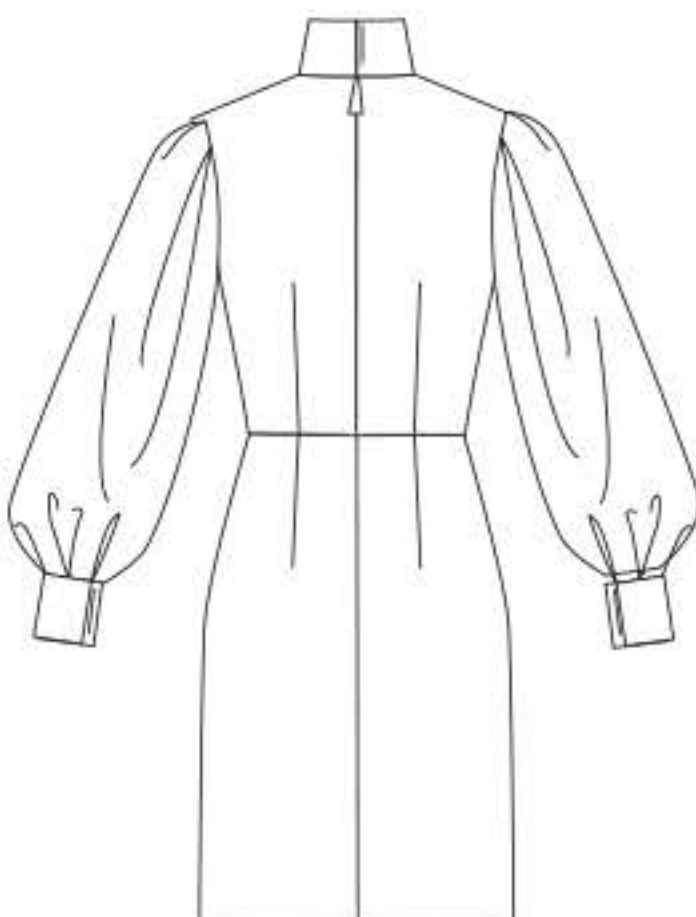
A	93	95	98	102	107	112	117	122	127
B	171	174	177	180	185	191	196	201	206

Longueur - dos, votre nuque à l'ourlet

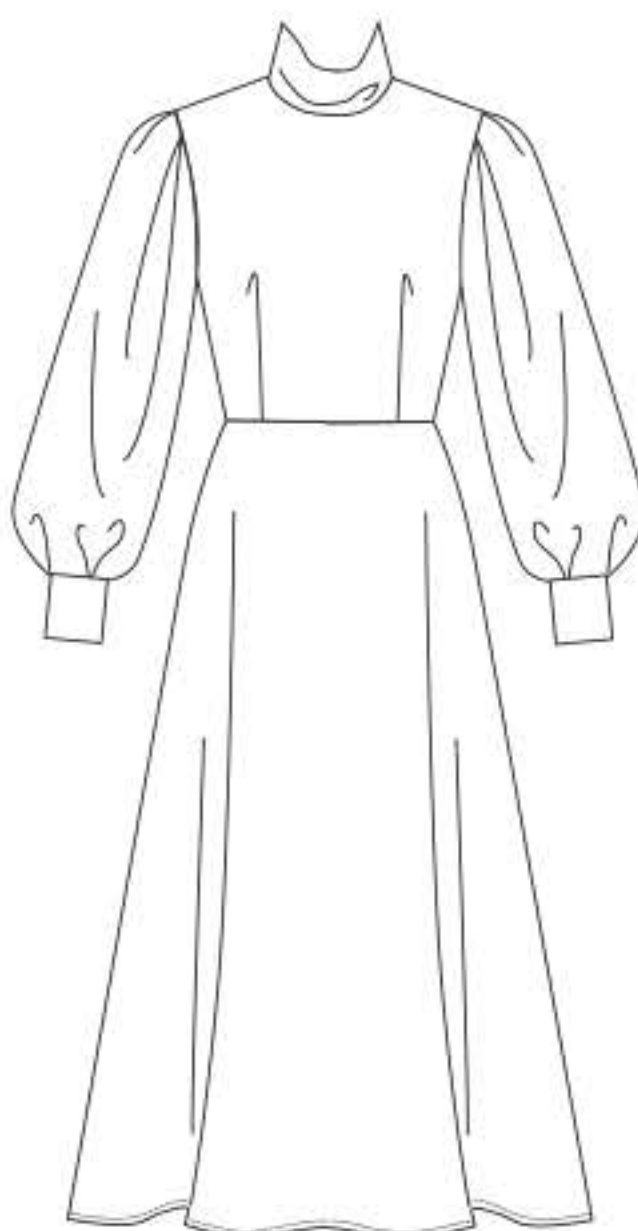
A	90	91	92	92	93	94	94	95	95
B	121	121	122	123	123	124	125	125	126



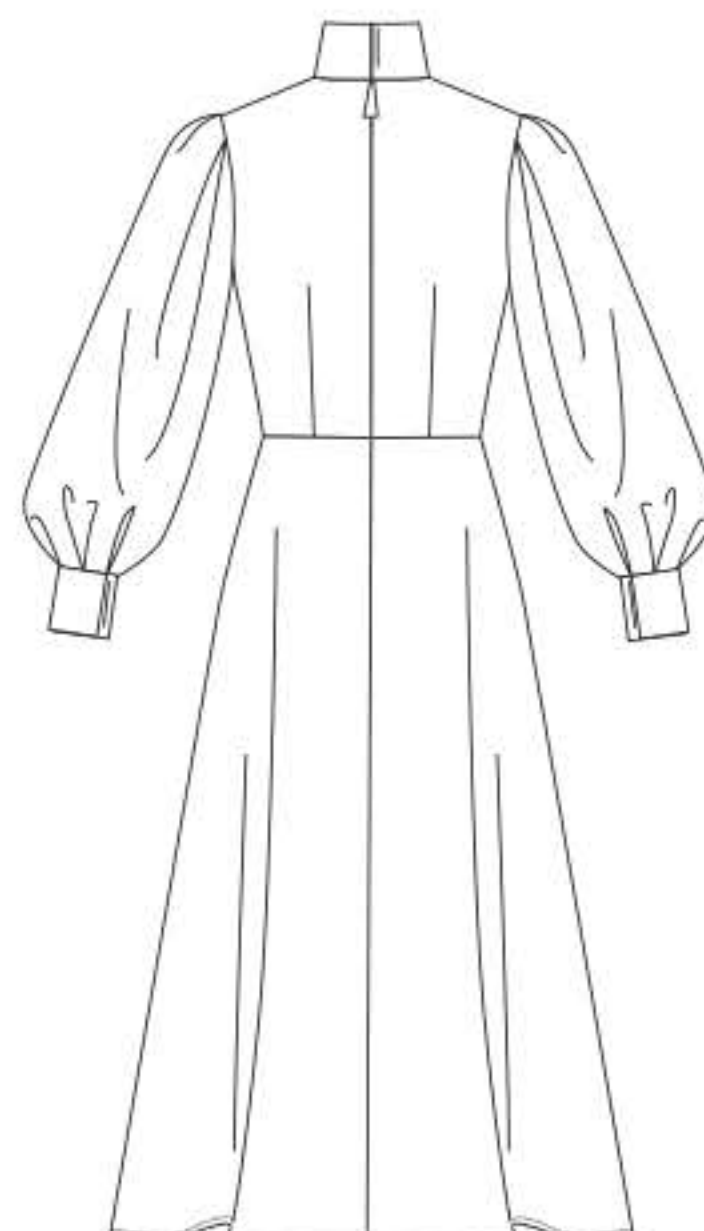
A



A



B



B

