

V1678

EASY/FACILE

MISSES' SHIRT: Loose fitting shirt has collar and collar band, asymmetrical button closure and length variations. **FABRICS:** Poplin, Broadcloth, Chambray, Gingham. Unsuitable for obvious diagonals. *With Nap. **Without Nap.

Combinations: **Y**(XS-S-M), **ZZ**(L-XL-XXL)

Sizes	XS	S	M	L	XL	XXL
	4-6	8-10	12-14	16-18	20-22	24-26
A	45 ^{***}	2 ¹ / ₄	2 ³ / ₈	2 ³ / ₈	2 ⁵ / ₈	2 ⁷ / ₈
	60 ^{***}	1 ³ / ₄	1 ⁷ / ₈	2 ¹ / ₄	2 ³ / ₈	2 ³ / ₈
B	45 ^{***}	2 ³ / ₄	2 ³ / ₄	3 ¹ / ₈	3 ¹ / ₄	3 ³ / ₈
	60 ^{***}	2	2 ¹ / ₈	2 ³ / ₈	2 ⁷ / ₈	2 ⁷ / ₈

Fusible Interfacing A,B

	18, 20"	3/4	3/4	3/4	3/4	7/8

NOTIONS: **A:** Ten 5/8" (1.5cm) Buttons. **B:** Twelve 5/8" (1.5cm) Buttons.

FINISHED GARMENT MEASUREMENTS

Back length from base of neck

	A	B	M	L	XL	XXL
A	25 ¹ / ₂	26	26 ¹ / ₂	27	27 ¹ / ₂	28
B	33 ¹ / ₂	34	34 ¹ / ₂	35	35 ¹ / ₂	36

CHEMISE (J. FEMME): Chemise ample à col et pied de col, fermeture asymétrique à boutons et variations de longueur. **TISSUS:** Popeline, Broadcloth, Chambray, Vichy. Grandes diagonales ne conviennent pas. *Avec Sens. **Sans Sens.

Séries: **Y**(TP-P-M), **ZZ**(G-TG-TTG)

Tailles	TP	P	M	G	TG	TTG
	4-6	8-10	12-14	16-18	20-22	24-26
A	115cm ^{**}	2.1	2.2	2.2	2.4	2.7
	150cm ^{**}	1.6	1.6	1.8	2.1	2.2
B	115cm ^{**}	2.6	2.6	2.6	2.9	3.0
	150cm ^{**}	1.9	2.0	2.2	2.4	2.7

Entoilage Thermocollant A,B

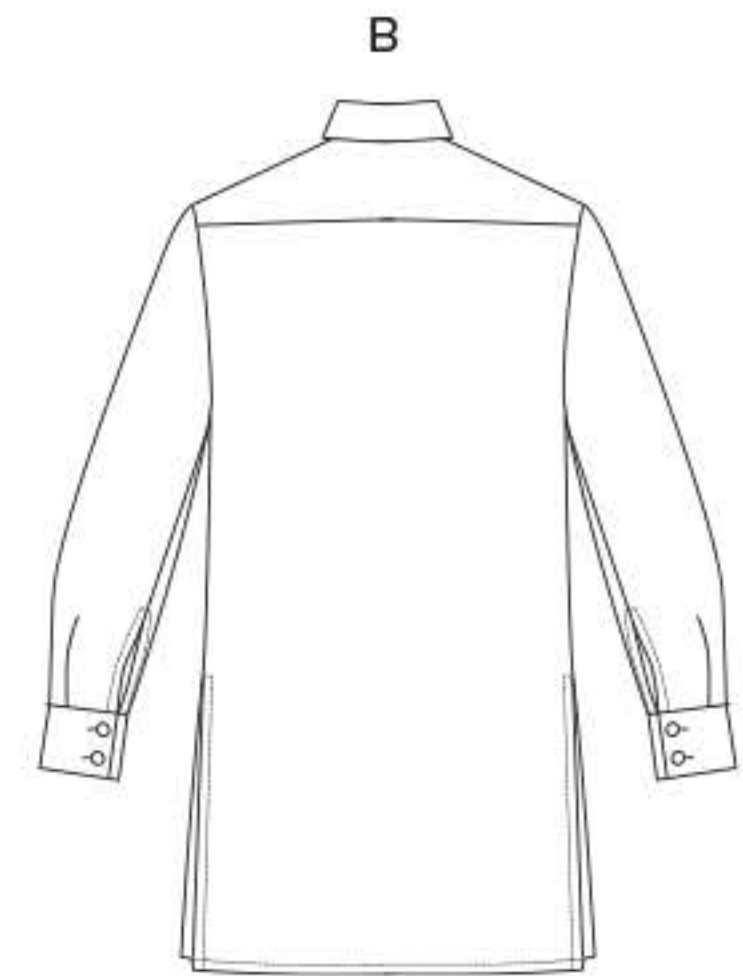
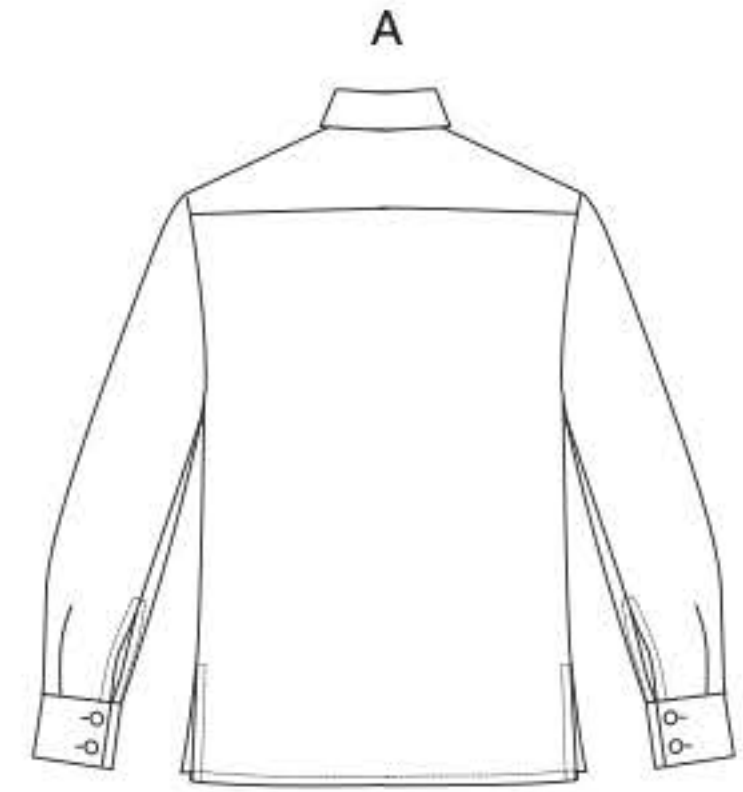
	46, 51cm	0.7	0.7	0.7	0.7	0.7	0.8

MERCERIE: **A:** 10 boutons de 1.5cm. **B:** 12 boutons de 1.5cm.

MESURES DU VÊTEMENTS FINI

Longueur- dos, votre nuque à l'ourlet

	A	B	M	L	XL	XXL
A	65	66	67	68	69	71
B	85	87	88	89	90	92



Y
[XSM (4-6) SML (8-10)
MED (12-14)]

V 1678 / Y 1

