

V1683

EASY/FACILE

MISSES' SKIRT: Close fitting, lined, mock wrap skirt with bias waist facings, topstitched hem facings and invisible center back zipper. B: Overskirt with asymmetrical hemline has narrow hems, wrong side shows. **FABRICS:** Crepe, Linen Blends, Gabardine. Unsuitable for obvious diagonals. *With Nap. **Without Nap.

Combinations: **A5(6-8-10-12-14), E5(14-16-18-20-22)**

Sizes	6	8	10	12	14	16	18	20	22
A 45"/**	2 ¹ / ₈	2 ¹ / ₈	2 ¹ / ₈	2 ¹ / ₈	2 ¹ / ₈	2 ¹ / ₈	2 ³ / ₈	2 ³ / ₈	2 ³ / ₈
60"/**	1 ¹ / ₂	1 ¹ / ₂	1 ¹ / ₂	1 ¹ / ₂	2 ¹ / ₈	2 ¹ / ₈	2 ¹ / ₈	2 ¹ / ₈	2 ¹ / ₈
B 45"/**	4 ³ / ₈	4 ³ / ₈	4 ¹ / ₂	5	5	5	5 ¹ / ₂	5 ¹ / ₂	5 ¹ / ₂
60"/**	3 ¹ / ₂	3 ¹ / ₂	3 ¹ / ₂	3 ¹ / ₂	4	4	4	4	4

Fusible Interfacing A,B- 18, 20"- 2 yds.

Lining A,B

45"/**	1 ⁵ / ₈	1 ⁵ / ₈	1 ⁵ / ₈	1 ⁵ / ₈	2 ¹ / ₄	2 ¹ / ₄	2 ¹ / ₄	2 ¹ / ₄	2 ¹ / ₄
--------	-------------------------------	-------------------------------	-------------------------------	-------------------------------	-------------------------------	-------------------------------	-------------------------------	-------------------------------	-------------------------------

NOTIONS: A,B: One 7" (18cm) Invisible Zipper, Hook and Eye, One Pkg. of 1/2" (1.3cm) Twill Tape.

FINISHED GARMENT MEASUREMENTS

Back length from waist

A,B	29	29	29	29	29	29	29	29	29
------------	----	----	----	----	----	----	----	----	----

JUPE (J. FEMME): Jupe faux-portefeuille moulante, doublée, à parementures de taille en biais, parementures surpiquées à l'ourlet et fermeture à glissière invisible au milieu dos. B: Dessus de jupe à ligne d'ourlet asymétrique, ourlets étroits, l'envers visible. **TISSUS:** Crêpe, Mélanges de Lin, Gabardine. Grandes diagonales ne conviennent pas. *Avec Sens. **Sans Sens.

Séries: **A5(6-8-10-12-14), E5(14-16-18-20-22)**

Tailles	6	8	10	12	14	16	18	20	22
A 115cm*/**	2.0	2.0	2.0	2.0	2.0	2.0	2.2	2.2	2.2
150cm*/**	1.4	1.4	1.4	1.4	2.0	2.0	2.0	2.0	2.0
B 115cm*/**	4.0	4.0	4.2	4.6	4.6	4.6	5.1	5.1	5.1
150cm*/**	3.2	3.2	3.2	3.2	3.7	3.7	3.7	3.7	3.7

Entoilage Thermocollant A,B- 46, 51cm- 1.9m.

Doublure A,B

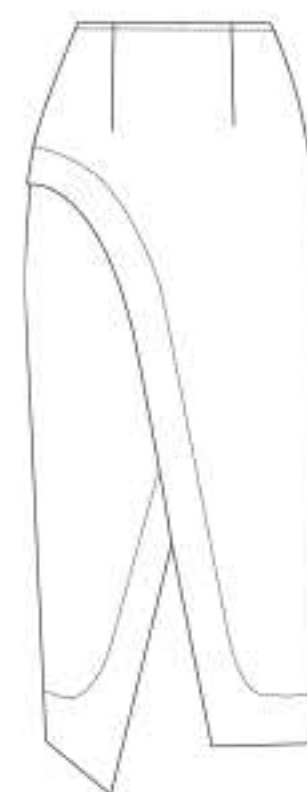
115cm**	1.5	1.5	1.5	1.5	2.1	2.1	2.1	2.1	2.1
---------	-----	-----	-----	-----	-----	-----	-----	-----	-----

MERCERIE: A,B: 1 fermeture à glissière invisible de 18cm, agrafe, 1 paquet de galon croisé de 1.3cm.

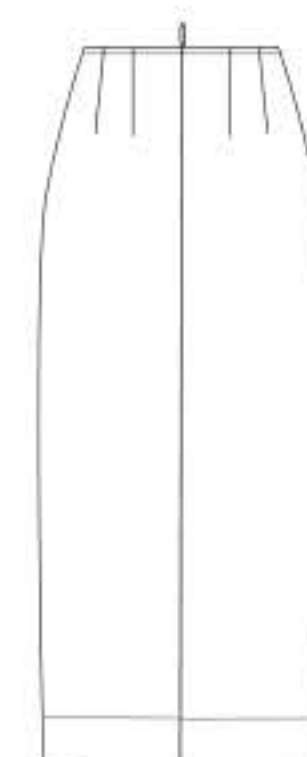
MESURES DU VÊTEMENTS FINI

Longueur- dos, taille à l'ourlet

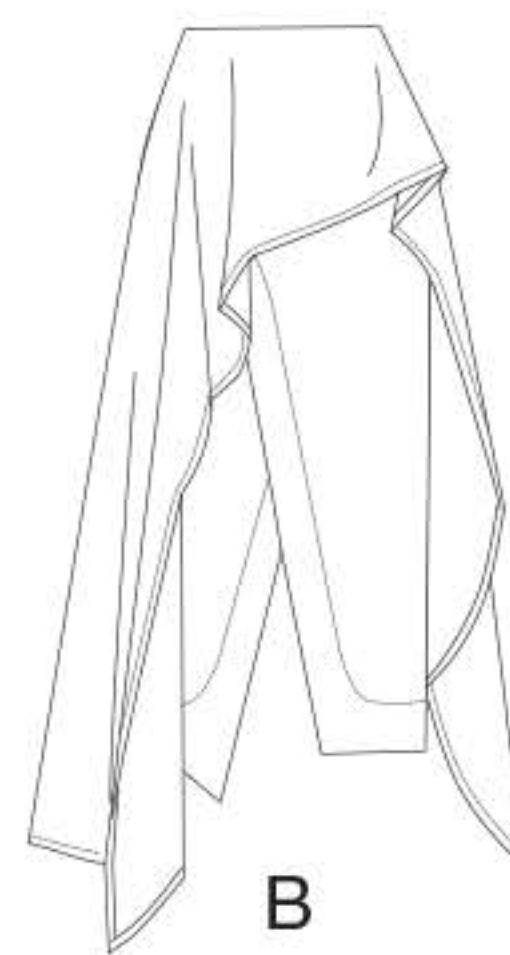
A,B	74	74	74	74	74	74	74	74	74
------------	----	----	----	----	----	----	----	----	----



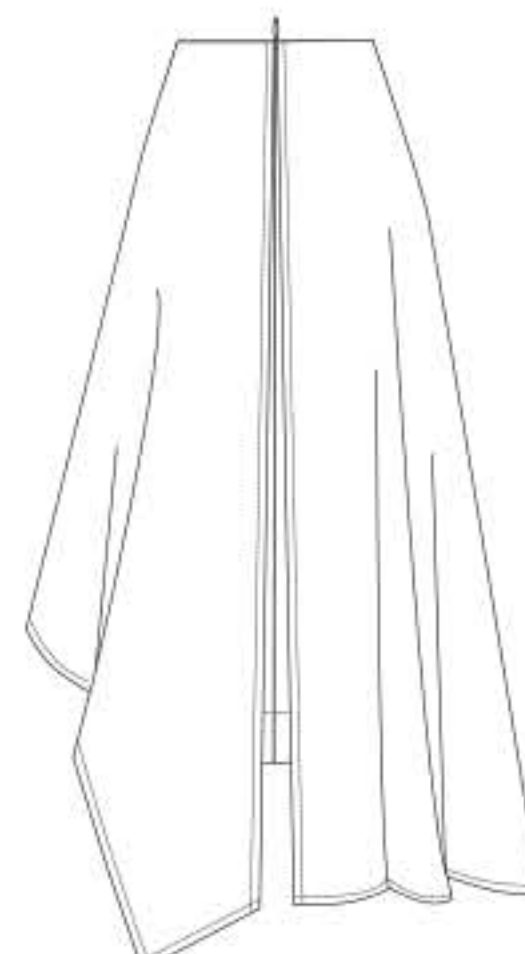
A



A



B



B

A5

(6-8-10-12-14)

V 1683/A5

1



0 3 1664 50567 9